

Trail Area Health & Environment Committee



MINUTES

Meeting:

**City of Trail – Committee Room #2
Tuesday, February 7, 2017 – 7:00 pm**

Committee Members in Attendance:

Mike Martin, Chair, City of Trail
Lisa Pasin, Alternate Chair, City of Trail
Mark Tinholt, Teck Trail Operations
Jeannine Stefani, Interior Health
Tiffany Armstrong, Community Member

Ron Joseph, Community Member
Marylynn Rakuson, Community Member
Sonia Tavares, Community Member
Dawn Tomlin, Interior Health

Others in Attendance:

Bruce Enns, SNC-Lavalin Inc.
Cindy Hall, SNC-Lavalin Inc.
Ruth Beck, Program Manager
Shane Ferraro, Warfield Councilor
Donna Haga, Ministry of Environment

Daniel Bouillon, Teck Trail
Andrea McCormick, SNC-Lavalin Inc.
Liz Anderson, SNC-Lavalin Inc.
Jason Lasuik, Ministry of Environment

MEETING MINUTES: Dated November 22, 2016

Motion to approve the minutes from November 22, 2016. With no omissions or errors noted, the minutes were accepted as is.

Note: Mike noted that at the end of the agenda discussions, there will be a short in-camera meeting.

PRESENTATIONS, REPORTS, DISCUSSIONS & RECOMMENDATIONS:

Presentations:

Home & Garden Program: 2016 Annual Report; attached

Cindy and Andrea shared the PowerPoint presentation of the 2016 annual report for the Home & Garden program.

With regard to the indoor dust study, Mark commented that the study's rationale was to update our information on the relationship between emissions of fugitive dust and the dust that gets into the home. This will inform future programming and provide us with a baseline for indoor dust from before the smelter recycle building came into operation.

Andrea clarified that some property owners decline remediation (after they have requested sampling), for many reasons, but often it's because they have put a lot of time and energy into their yards and gardens and they are comfortable with their soil numbers.

Mark would like to know the total number of gardens that have been sampled by the program and wondered aloud if there will be a point where we will have sampled all the gardens in town?

Andrea clarified that one contractor (Alpine) performs the remediations, yard improvements, and conditioning of yards. Bruce commented that it may make more sense to do full yard remediations as a

rule, rather than partial remediations where we may need to go back and remediate again in the future as the program progresses.

Discussion took place about promoting the program by placing a sign in the yard while it is under remediation. It has been mentioned in the past, but two concerns have stopped us: it may become a problem for the contractor while they are trying to get the work done if they are interrupted by those wanting to know more. Also, it may affect some homeowners and their desire for privacy. We could consider putting a sign up in the yard after the work is completed for a time, with permission from the homeowner.

Ruth mentioned that the preliminary results from the public consultation are in and there is a good satisfaction rate for the Home & Garden program: 72%.

Mike commented, "Thanks; great report. Lots of work happening and great results".

Early Years Initiatives in the Lower Columbia; attached

Sonia presented an update on Early Years Initiatives in the Lower Columbia. The EDI (Early Development Instrument) questionnaire results were provided via email prior to the meeting and Sonia encouraged everyone to refer to them on their own time. She highlighted that the EDI is performed with kindergarten children and the questionnaire is delivered by their teacher (who has training to do so). The results for our area, Kootenay-Columbia South, indicate that Trail is less vulnerable than BC overall. Our area has decreased in vulnerability over time, from 29% to 22%. There is good investment in the area by the CBT (Columbia Basin Trust), as well as the work done by CBAL (Columbia Basin Alliance for Literacy), FAN (Family Action Network), Strong Start, as well as a strong community. Sonia mentioned Revelstoke; they have only 7% vulnerability as a result of big financial investments and putting almost all services under the same roof to improve access.

Success by 6 and FAN utilize the EDI results and are advocating for more community education and community screenings of young children's developmental milestones: "check early, check often".

Sonia added that there is also a TDI (Toddler Development Instrument) that examines contextual factors that influence ECD (early childhood development). This is more about the family and early life experiences; not necessarily the child. The aim is to normalize screening for developmental milestones.

Sonia encouraged anyone who would like more information to speak with her. She cannot divulge info pertaining to specific schools but can separate the data between Castlegar and Trail. She also clarified that this year's data are for public schools, but they hope to involve private schools next year.

Family Action Network Update; attached

Ruth provided the update for FAN and highlighted the dedication to early screening and networking, with supports for families with young children. She also shared that FAN will soon be celebrating the opening of 2 new Easy Peezy comfort stations; one at the Aquatic Centre and one at the Trail Memorial Centre.

Sonia shared that FAN was not the successful applicant for hosting the Cities Fit for Children Summit, but they are looking into why they didn't get it.

Ruth highlighted HELP (Human Early Learning Partnership) and the research the THEC commissioned and shared with the community. (Note subsequent to the meeting: the literature reviews are referenced on HELP's website at: <http://earlylearning.ubc.ca/library/citations/>)

Minimizing lead exposure in combination with improving other developmental inputs makes for the best outcome for children: it is why we're here!

Program Updates and Business Arising:

Community Check-In:

In response to a question from Shane Ferraro with regard to Haley Gulley in Warfield, Mark clarified that in the fall of 2016 Teck installed a sediment trap to stop sediments from travelling offsite down the creek.

Teck is coming up with a long-term plan for reclamation of the closed landfills located at the head of Haley Gulley. This work is being done under the review of the BC Ministry of Environment Land Remediation Section and Environment Canada.

Air Quality: *report attached*

Mark highlighted the annual averages for lead and arsenic in air. The 2016 annual average for lead in air is the lowest overall that we've ever had (even for strike and shutdown years). Mark is hopeful that the smelter recycle building is a major reason for the low levels, but there was also exceptional rainfall, a short maintenance shutdown, and snowfall. The trend is continuing in January and we are hopeful that it will continue throughout the year. The 2016 annual average for arsenic in air, $0.0078 \mu\text{g}/\text{m}^3$, is below the 2018 goal of $0.01 \mu\text{g}/\text{m}^3$!

Mike commented that the result is incredible; we've had weather variables in the past and not seen this level of improvement.

Family Health: *attached*

Jeannine spoke about the upcoming winter blood lead clinics. She also highlighted the development of the new IH database; it should have more functionality and reduce the time Jeannine has to spend organizing the data collection.

Home & Garden: *no report beyond the 2016 annual report.*

Program Manager's Report: *attached*

Ruth presented the report and highlighted that she is working on reviewing the draft consultation report and updating our knowledge on sulphur dioxide (SO_2). She also raised that the spring 2017 newsletter will be in the works soon enough and we should consider what we would like to have in it. Suggestions for the newsletter from those in attendance: consultation update, home and garden, a note for expectant parents, dust study update (if available), feature a THEC member, FAN update, Easy Peezy comfort stations, air quality update (Mark will check on specific content, e.g. possibly about the second acid plant or a Teck fugitive dust update (possibly mention our key messages about SO_2)).

Executive Meeting Report: *verbal report*

Ruth listed the various working group meetings that will be taking place over the next few months:

- The Consultation Working Group and the Community and Families Working Group will jointly meet in early March to go over the draft consultation report. A doodle poll is forthcoming to arrange the date.
- Air Quality Technical Working Group: Ruth will present a draft Issues Brief and PowerPoint on SO_2 at the next meeting in early April (date TBD).
- The WAS Impacts Assessment Working Group will meet in early March.
- The Blood Lead Levels Reduction Working Group will meet later in Spring (May or June) to look at details of further supporting the reduction of blood lead levels. This group will look at the findings of the dust study, the draft plan for soil remediation (WARP), and work being undertaken by the MHO and BCCDC as well.


Upcoming THEC meetings

Ruth listed the proposed THEC meeting dates for the rest of 2017:

- April 18, 2017: Consultation Report and Presentation on SO_2
- June 27, 2017: Fugitive Dust Reduction Program update and Dust Study findings
- September 19, 2017
- November 28, 2017: Results from the 2017 Fall Blood Lead Clinic


ACTION: Liz to send out the proposed dates via email.

NEXT MEETING: **Tuesday, April 18, 2017**




HOME & GARDEN 2016 Annual Summary

Summary to the THEC
February 7, 2017




Outline


- Home & Garden Staff
- Healthy Homes
- Outreach Activities
 - THEP
 - Public Consultation
- Community Program Office
 - Radon Kits
 - Lead Safe Renovation
- Dust Study
- Soils Program
 - Assessment
 - Remediation
- Upcoming for 2017




Home & Garden Team




Liz Anderson




Bruce Enns



Cindy Hall




Andrea McCormick




Healthy Homes

- 76 Healthy Homes Visits completed in 2016
- 73 'new' families identified in 2016
 - 14 visits to parents while still expecting
 - 6 new families are grandparents
- 12 families are scheduled for visits in 2017



Healthy Homes Visits	2012	2013	2014	2015	2016
Service Wait Days *	312	114	42	35	17

* Initial contact to HH visit, not including weekends



Healthy Homes

- 123 follow-up actions
- Material supports



HFHH Support Provided to Families	
Dust Buster Kits	63
Yard and Garden Kits	56
Household Vacuums	59
Sandboxes	26
Yard Improvement	39
Paint Screening	11 (8 found lead paint)
Flooring	1



Community Outreach

ENGAGEMENT ACTIVITIES

- **THEP and Community Events**
e.g. Trail Market Family Zone, Easy Peezy Comfort Station
- **Presentations**
e.g. Trail Area Daycares
- **Community Collaboration**
e.g., Caring Communities Services Map, Responding to Domestic Abuse Handbook, Lower Columbia Healthy Community Planning



Community Outreach

How do families find us?

Event Name	2012	2013	2014	2015	2016
Ages & Stages			1%		
Building Beautiful Babies		2%	3%	5%	10%
Expectant Parent Ev.	2%	6%	1%		
H & G Days			1%		
IH Blood Lead Clinic	97%	62%	14%	8%	5%
IH Baby Clinic			6%	18%	10%
IH Public Health		5%	20%	35%	47%
Newsletter			1%	4%	1%
Other			1%	6%	4%
Pre-natal Class			4%	1%	1%
Prenatal Services					
Faire		2%			
Ready Set Learn			1%		
Teddy Bear Picnic			3%	1%	
Word-of-mouth	1%	21%	38%	22%	19%
Walmart			3%		3%

Great ways to find expectant parents!

IH continues to be the main way we find families!



Public Consultation

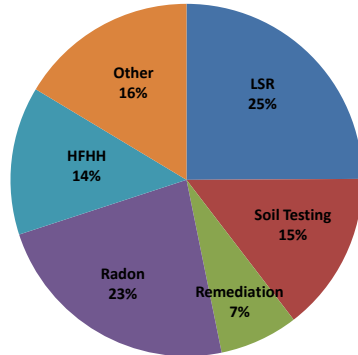
Provided support

- Participated in the Consultation Committee
- Promoted the consultation within the community
- Facilitated and assisted with 8 presentations
- Focus group presentation



Community Program Office

We logged 763 interactions with the public in 2016!



Radon Kits

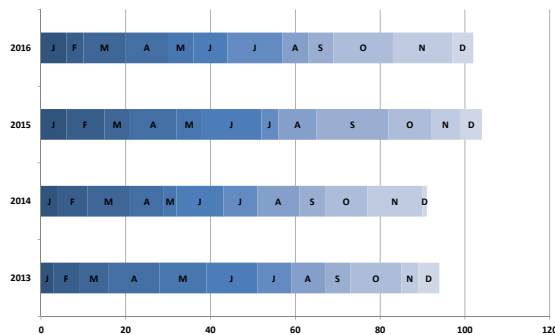
91 Radon detection kits in 2016 with 43 in November & December

Year	Number of Kits
2014	32
2015	122
2016	91
Total (last 3 years)	245



Lead Safe Renovation

We had 102 requests for supplies!
22 shop vac loans & 20 filters and bags



New to Lead Safe Renovation in 2016!

Survey with 34 respondents

- 32 found the supports very helpful (97%)
- 12 requested different supplies (36%)
- 8 said we need more publicity (24%)

How-To Videos – 20 had not watched them

- 12 did not know about the videos (60%)
- 6 said they know how to reno safely (30%)
- 2 said the videos did not apply (10%)
- The 14 people that watched the videos had positive feedback

New supports!

- Filters and bags for personal shop vacs
- HEPA tool attachments & Extendable poles



Lead Safe Contractors

- Two contractors in our first year
- Looking to renew these and find more 2017!



Dust Study

- 63 participants
 - At least 6 properties per neighbourhood
- Placed a mat at the door
- Set out an outdoor dust fall jar
- Placed an indoor dust fall jar in the home
- Collected after approximately 28 days
 - Submitted to a lab for extraction (loading)
 - Submitted for analysis (concentration)
- Filled out a questionnaire with the participant



Dust Study

- Results were received Dec 21, 2016
- Next steps
 - Summarize data
 - Attempt to answer questions regarding dust distributions and loading
- Deliverables
 - Report to THEC
 - Letter to participants
 - Draft an update for the community



Soils Program

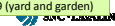


Yard Assessment

- 48 Healthy Homes properties were sampled in 2016
 - 3 families signed up in November and are on the list for spring sampling
- 94 Community Program residential properties were sampled
 - 16 yard requests remain on the list with the longest wait from April, 2016

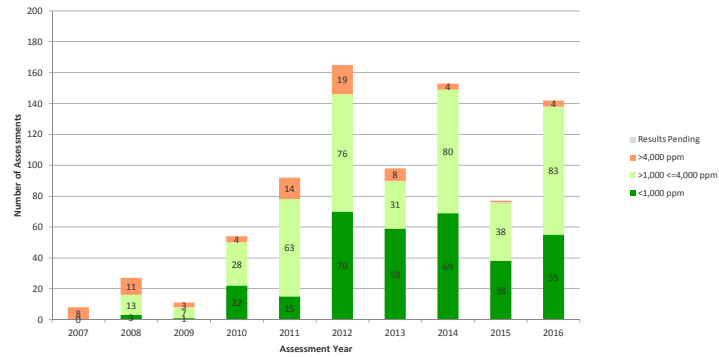
• 1 partial remediation Done!
• 16 Yard Improvements Done!

Type	Number of Properties Sampled	Results	Percentage of Yards Sampled	Wait Time (days)
Healthy Homes Yards	48	1 above remediation action level (>4,000 ppm lead)	2 %	12
		29 qualified for yard improvement	60 %	
Other Yards	94	3 (>4,000 ppm lead)	3 %	272 (yard only) 149 (yard and garden)



Yard Assessment

Residential Yard Soil Assessment by Year



Garden Assessment

- 72 vegetable gardens were sampled in 2016
- Most gardens were assessed as part of a yard (9 were only gardens)
- Average wait time for Vegetable Garden soil assessment is 88 days

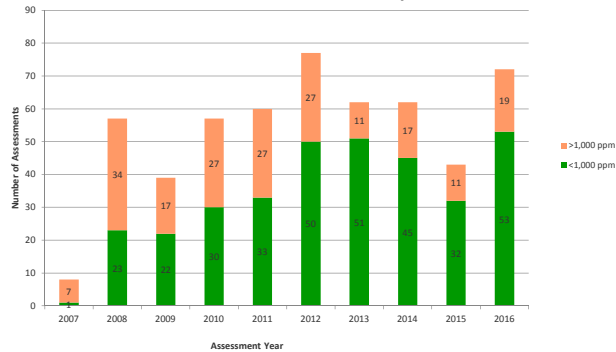
Type	Number of Gardens Sampled	Number Above Action Levels	% Above Action Level	Wait Time (days)
Vegetable Gardens	72	19 garden qualified for remediation (>1,000 ppm lead)	26 %	36 (149 with a yard)

- 6 completed in 2016
- 12 will be offered for 2017 replacement
- 1 declined



Garden Assessment

Garden Soil Assessment Results by Year



Remediation & Yard Improvement



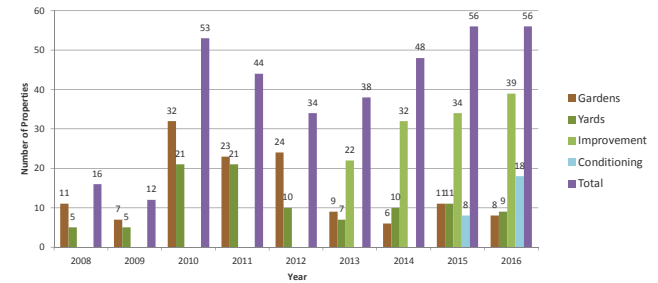
Yard Improvement & Remediation

- Similar remediation and yard improvement program to previous years
- A total of 76 properties received work
 - 39 yards received yard improvement work
 - 18 additional properties received yard conditioning
 - 9 yards were remediated (2 partial)
 - 8 vegetable gardens remediated (5 more as part of yards)
 - 2 received other remediation support
- Service times from signed consent to completion of work:
 - 10 weeks for CP Yards and Gardens
 - 3 weeks for HH Yard Improvement



Yard Improvement & Remediation

Summary of Remediation and Improvement Work by Year



Improvement & Remediation

Year property was tested for Remediation and Improvement in 2016

Type of Work	Properties in 2016	Year the Property was Tested			
		2016	2015	2014	2013 (or earlier)
Yard Improvement	39	17	12	5	5
Garden	8	2	4	1	1
Yard Remediation	9	-	4	4	1

Number of DAYS from Soil Testing to Remediation or Improvement

Type of Property	Type of Work	Shortest Wait	Longest Wait	Median
HFHH	CM	3	953	91
	HH Yards	12	1943	141
CP	Yards	152	2183	497
	Yards & Gardens	76	657	108



Factors that affect timing

- | | |
|--------------------------|---------------------------|
| LEAD CONCENTRATIONS | WORK PLANNED BY OWNERS |
| BARE SOIL | CHANGING CONTACT NUMBERS |
| AGE OF CHILDREN | JUNK REMOVAL |
| BLOOD LEAD CONCENTRATION | TREE REMOVAL |
| NEIGHBOURHOOD | PROPERTY SALES |
| WEATHER | LEAD PAINT |
| EQUIPMENT | NEIGHBOURS |
| BUDGET | NEIGHBOURING SOIL RESULTS |
| HOLIDAYS | WORK IN THE STREET |
| CONSENT | BUSY ROADS |
| RAIN | ACCESS |
| HEAT | LABOUR NEEDS |
| SOD | TIMING |
| SOIL | CADMIUM |
| LANDSCAPING | LEACHABLE METALS |
| TIME SPENT AT HOME | REPROCESSING |
| VEGGIE GARDENS | SIZE OF YARD |
| PROXIMITY TO OTHER YARDS | ABSENTEE LANDLORDS |



Improvement & Remediation for 2017

- 9 owners will be offered remediation
- 12 gardens will be offered remediation
- 21 Healthy Homes properties have work proposed
 - 9 conditioning
 - 7 properties to evaluate

Families with young children continue to have the highest priority



Upcoming in 2017

- More Lead Safe Reno Outreach & Partnerships
- Dust Study Findings
- Continuation of our Healthy Homes & Soils Programs
- Responding to findings from the Public Consultation



Early Years Initiatives in the Lower Columbia



Trail Health & Environment Committee –
February 7, 2017

Early Development Instrument (EDI)

A questionnaire that measures five core areas of early child development that are known to be good predictors of adult health, education and social outcomes.

Not used to assess individual children, rank teachers, neighbourhoods, schools or school districts

The EDI is a population-level research tool.

Physical Health & Well-Being

- Over or underdressed for school
- Too tired/sick
- Late
- Hungry
- Independent in washroom habits
- Has an established hand preference
- Well coordinated
- Sucks a thumb/finger
- Level of energy during school day
- Holds small objects like pens
- Manipulates objects
- Climbs stairs
- Overall physical development

Social Competence

- Gets along with peers
- Co-operates with other children
- Plays with various children
- Demonstrates self-control
- Demonstrates respect for adults/children
- Listens attentively
- Follows directions
- Works independently
- Solves own day to day problems
- Adjusts to changes in routines
- Curious about the world
- Eager to play with a new toy/game/book

Emotional Maturity

- Helps someone who is hurt
- Helps other children with a hard task
- Comforts a child who is crying/upset
- Is restless/impulsive
- Difficulty taking turn
- Gets into physical fights
- Bullies
- Kicks/bites
- Has temper tantrums
- Is upset when left by parent
- Seems unhappy or depressed
- Is nervous/high-strung
- Incapable of making decisions
- Is shy

Language and Cognitive

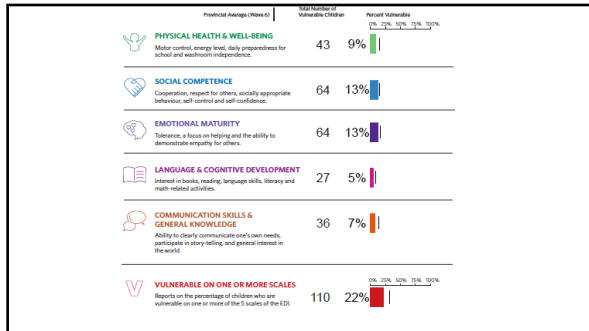
- Handles a book
- Identifies 10 or more letters
- Takes part in group reading
- Experiments with writing tools
- Interested in books/reading/number games
- Reads simple words
- Sorts and classifies objects
- Uses one to one correspondence
- Counts to 20

Current provincial vulnerability rate is 32.2%

1 IN 3 CHILDREN VULNERABLE IN BC

Current Kootenay/Columbia School District 20 vulnerability rate is 22%

VULNERABLE CHILDREN LIVE IN EVERY NEIGHBOURHOOD IN BC



Moving forward

What is our Local region's response to EDI results

- More community screening taking place
- Check Early Check Often program
- More awareness of local EDI results in community

Toddler Development Instrument (TDI) – Greater Trail a Pilot community

A questionnaire for parents/primary caregivers of 16-20 month old children. The Toddler Development Instrument (TDI) asks questions related to contextual factors that influence early child development, such as daily routines, family-child interactions, and available parental/caregiver and community supports.

Why TDI?

The purpose of the TDI is to better understand the early life experiences of toddlers and their families and to elicit further systems of support for families and communities.

What will it look like in community?

We will be assisting the parents in administering the ASQ with the TDI Questionnaire

Pilot project so we are excited what will this will look like in our community and what our data will look like.

We look forward to working on this project with UBC!

Lower Columbia Check Early Check Often Program



Ages and Stages Questionnaire

A Parent completed tool

Professionals assist with the scoring

Parents are given follow up information as required.

Why Screen?

To encourage parent involvement & knowledge

To detect delays & connect early

To gather data regionally

6 events since 2014 in 3 communities

204 kids screened

43 flagged for further follow up

Fall Screening Clinic

- Kiro Health Centre in Trail
- "Pop up hub" concept
- Partners include:
 - Kootenay Family Place
 - Interior Health
 - Success by 6
- Services provided on site:
 - Ages and Stages screen
 - Dental Check
 - Audiologist
 - Speech and Language
 - Access to other info

Spring Mobile Clinics

- Various locations in region
- Bring services to communities
- Partners include:
 - School District 20
 - CCRR
 - Kootenay Family Place
 - Interior Health
 - Success by 6



Thank you!

Together we all work for families in our
area!



Update to THEP January 2017

Activity	Notes
Ages and Stages – Early Childhood Development Screening	<ul style="list-style-type: none"> • Upcoming Mobile Screening Day – Warfield Thursday, April 06th at Webster Elementary Call to Register 1-855-368-3707 • Since 2014, 204 children screened across our region with 43 referred for additional follow up • Launch of the ‘Check Early – Check Often’ Regional Early Screening Program coming in February. Watch for more information • TDI (Toddler Development Instrument) pilot project with UBC set to unroll Feb 2017
Easy Peezy Family Washrooms	<ul style="list-style-type: none"> • 3 sites in Rossland • 2 sites in downtown Trail, including the THEP office • Watch for 2 new Trail locations in the very near future – the Aquatic and Leisure Centre and Trail Memorial Centre
Early Screening Toolkit Project	<ul style="list-style-type: none"> • Video script has been vetted with advisory group and filming to take place March 2017; promoting the importance of early developmental screening • Parent resource tools have now been completed. The key ring and fridge magnet promote ‘Check Early Check Often’ message and provide ideas on how to encourage development at home. • New funding from the Trust will assist in the launch of a regional Community of Practice for service providers regarding Early Screening
Creation of the ‘FAN Parent Advisory’ group	<ul style="list-style-type: none"> • Through our Parents and Families Task Force, we will be launching a Parent Advisory Group in early 2017. Looking to recruit parents from each of the 5 Lower Columbia communities for input around FAN priority projects
Application for BC Healthy Communities ‘Cities Fit for Children Summit’	<ul style="list-style-type: none"> • Submitted last November. All 5 of our regional Mayors signed letters in support of hosting the Summit in our region in 2018. We are waiting to hear if we were the successful bid.



Feb 7, 2017

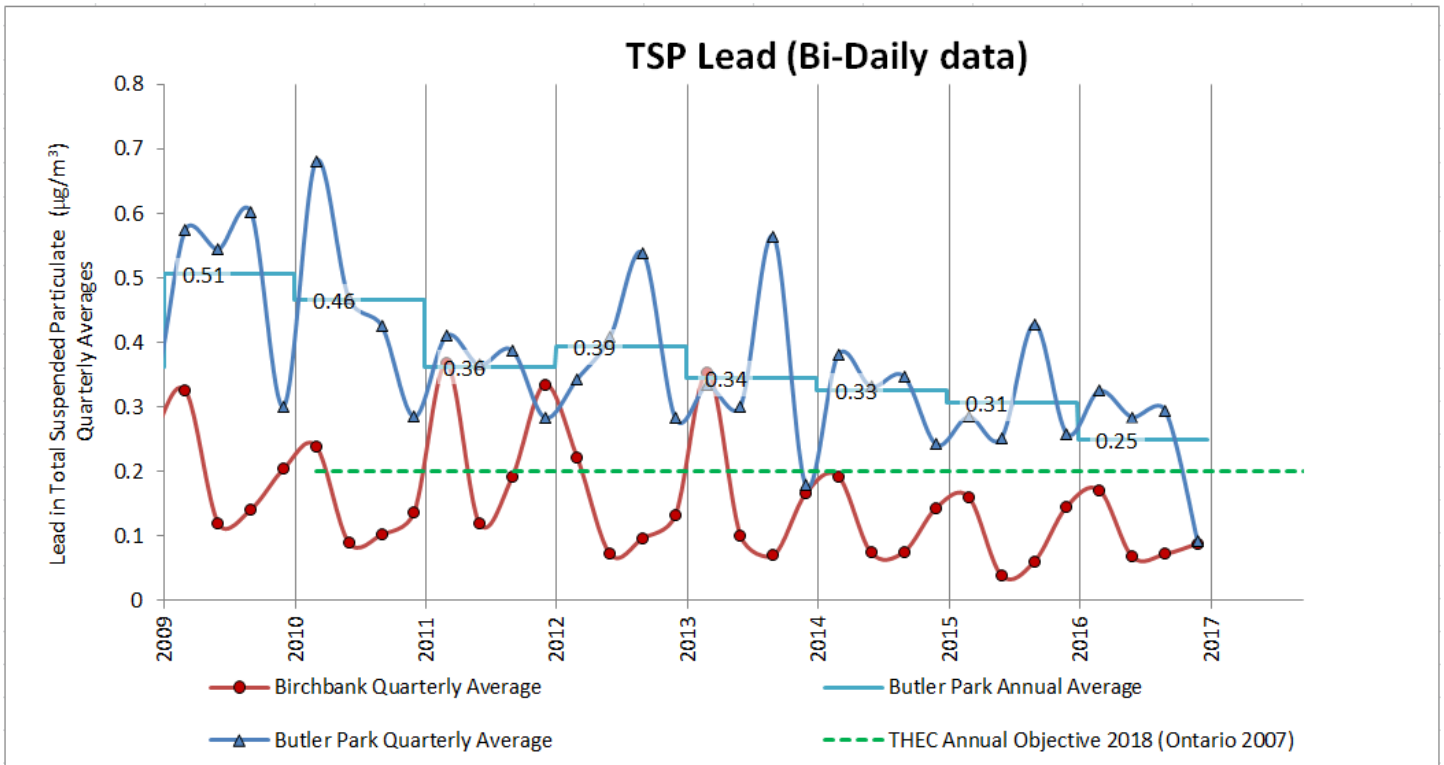
RECENT HIGHLIGHTS

1. Lead in Air:

- The average for the fourth quarter of 2016 was very low. Overall, 2016 was the lowest ever annual average for lead in community air using the current monitoring locations.

Details:

The chart shows quarterly averages for Lead in air (measured in Total Suspended Particulate) for Butler Park (dark blue), Birchbank (red), as well as the annual average for Butler Park (light blue), in comparison to the 2018 THEC Air Quality Objective (green dashed line). Quarterly averages for Lead in ambient air are expected to have some variability due to season, weather, predominant wind direction and operational variance. The average for the fourth quarter of 2016 at Butler Park ($0.09 \mu\text{g}/\text{m}^3$) was very low and could be due to a combination of the record rainfall in October, the commissioning of the Smelter Recycle Building, a maintenance shutdown, or other factors. Overall, 2016 was the lowest ever annual average for lead in community air using the current monitoring locations.

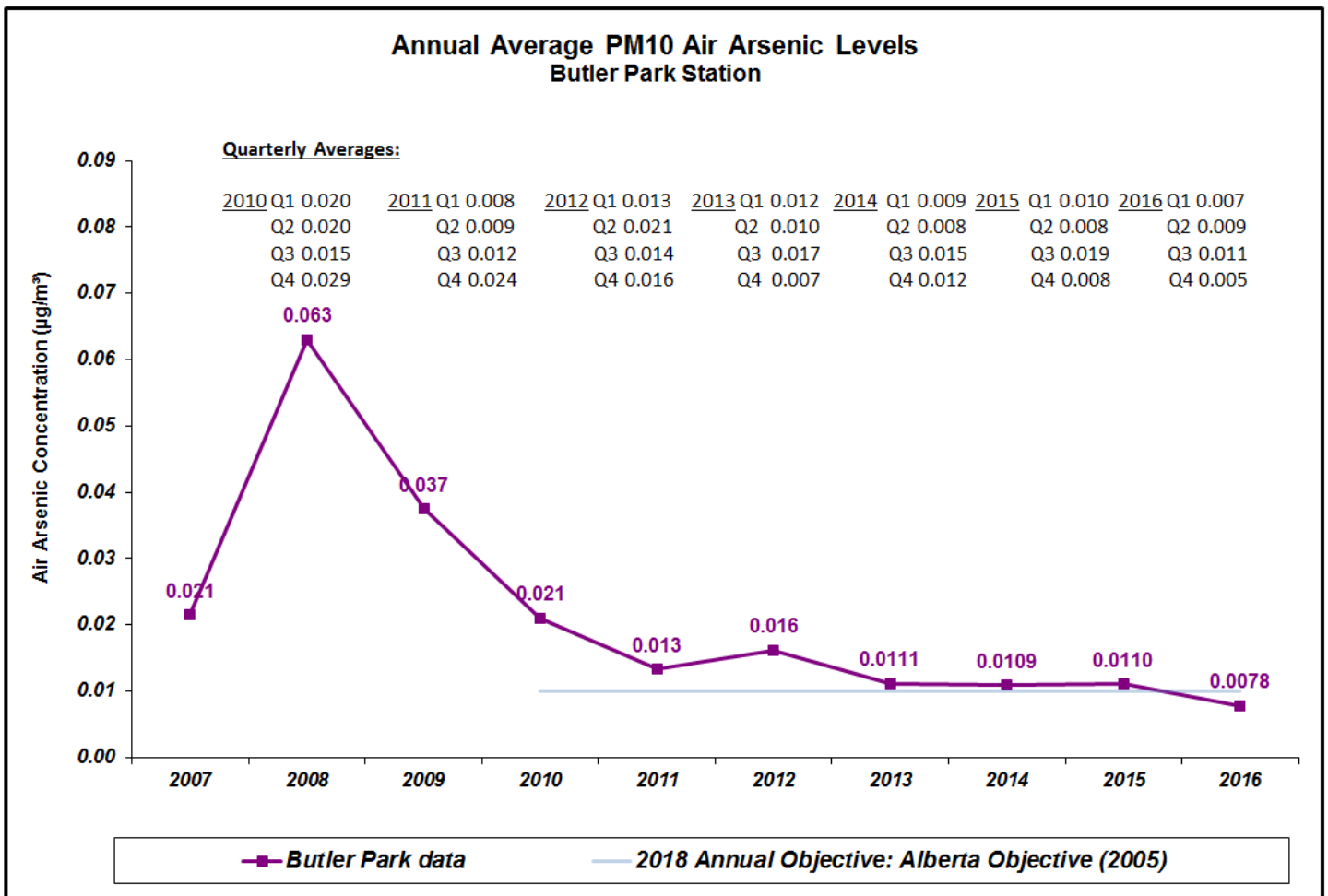


2. Arsenic in Air:

- The annual average for arsenic in air continues to be improving; the average for 2016 achieved the 2018 objective, and was the lowest ever annual average for arsenic in community air using the current monitoring locations.

Details:

The chart shows the annual average for Arsenic in air (measured as inhalable PM₁₀ fraction) for Butler Park (purple) in comparison to the 2018 THEC Air Quality Objective (blue line). Improvements between 2008 and 2011 appear to be the result of maintenance of the Continuous Drossing Furnace and Refinery Scrubber Stack. The 2016 annual average was 0.0078 µg/m³, lower than the objective of 0.01 µg/m³, and the lowest ever annual average for arsenic in community air using the current monitoring locations. The average for the fourth quarter of 2016 at Butler Park (0.005 µg/m³) was low and could be due to the same combination of factors as listed for lead above.





February 7, 2017

RECENT HIGHLIGHTS

1. February 20th and 21st, 2017 blood lead clinics
2. Healthy Family Visits
3. Community Outreach
4. New Trail Blood Lead Program Database

ADDITIONAL DETAILS

1. February 20th and 21st, 2017 blood lead clinics
 - 44 children invited
 - 24 children that have turned 6 months old since the Fall clinic
 - 1 family declined testing
 - 14 children that were case management from the Fall clinic
 - 6 children that parents' have requested February testing
2. Healthy Family Visits
 - 65 done 2016
 - Average 8.8 months old (range 2 months to 38.5 months old)
 - 10 declined - 87% participation rate
 - 6 had previous Healthy Family visit with older child
 - 18 since last THEC meeting November 22/2016
 - 1 more visit scheduled (Feb 28)
3. Community Outreach
 - Attended local pregnancy outreach program on December 13th, January 31st and continue about once a month.
 - Presented with Cindy at Child Care Resource and Referral Program December 13th for local child care providers.
 - Scheduled to present to Sunningdale Children's Centre February 8th, 2017.
4. New Trail Blood Lead Program Database
 - Continue to work collaboratively with Interior Health's Information Management Information Technology department and Teck to develop a new Trail Blood Lead Program Database.



February 7, 2017

RECENT HIGHLIGHTS

1. *WARP Related Discussion Planning:* Project management and support for discussions and action steps.
2. *Lead Safe Renovation:* Working with Andrea to develop Healthy Renovation visit concept, plan a meeting with the RDKB, and other actions to increase awareness and uptake of this program
3. *Consultation:* Reviewing drafts of the public input summary and final report.
4. *Sulphur dioxide draft communications:* As time permits, drafting a background document (an Issues Brief) with all the details. From this, we will develop draft key messages, a draft Fact Sheet, and draft Powerpoint presentation to be given at the next THEC meeting. All the drafts will go to the next AQTWG meeting for review and revision/approval when ready.
5. *Spring Newsletter early planning:* The newsletter will come out in late May. If you have suggestions for what to include, please let me know. We plan to include public consultation input highlights and promotion of our home and garden programs.