

# Blood Lead Levels in Trail Fall 2019

Population Health,  
November, 2019



Interior Health  
*Every person matters*

# Objective

- \* Overview of blood lead levels tested in fall 2019
- \* Comparison of mean blood lead levels in 2019 to previous years

# Who Was Tested in 2019?

## Target Group

- \* Children aged 6-36 months, living in City of Trail or Rivervale (Area 2/3)



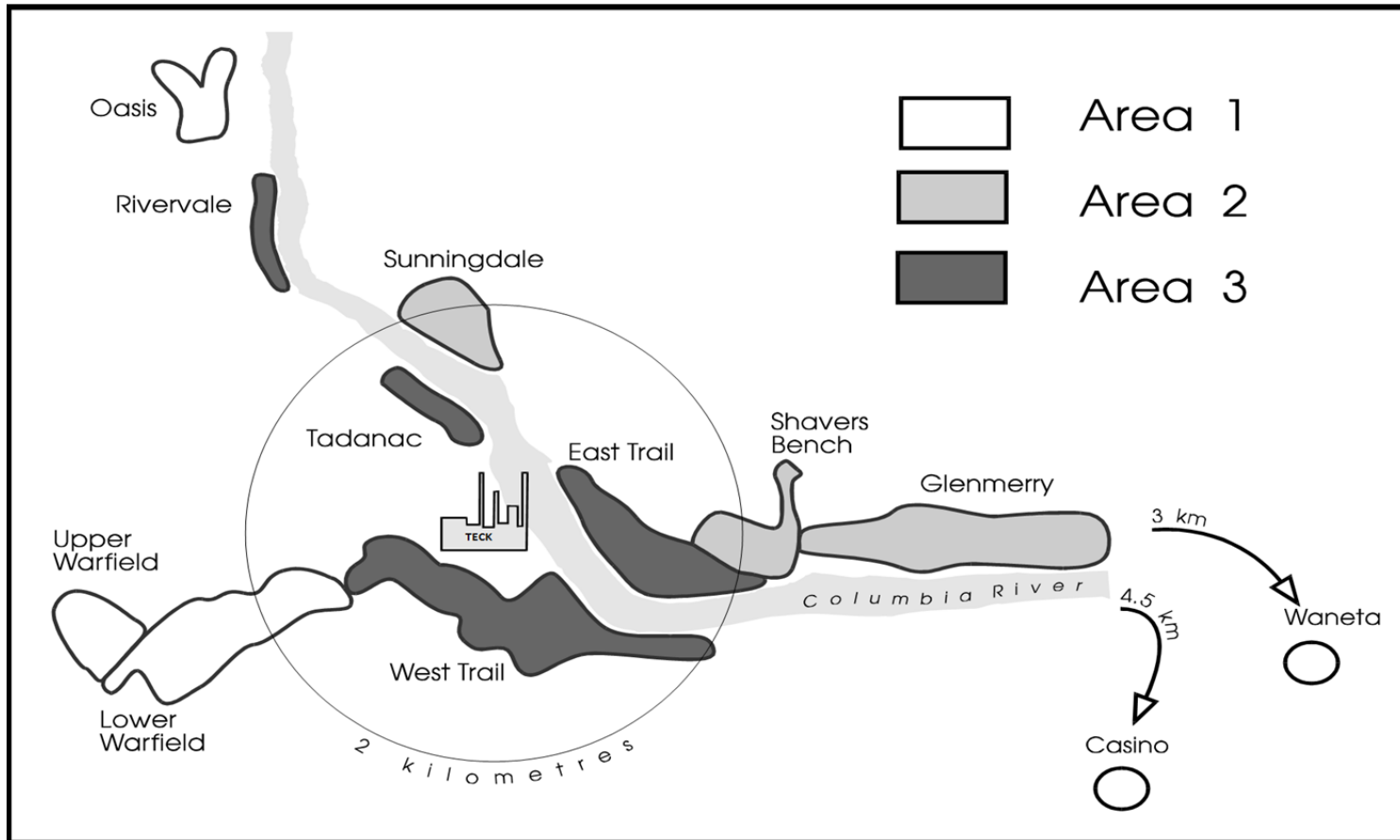
# Additional Testing

These results do not contribute to the yearly analysis

- \* Children new to the area, up to the age of 5 years old
- \* Children with previous enhanced support follow up who are now over 36 months old
- \* Children whose parents requested testing for their child from outside target area and age range



# “Areas” & Neighbourhoods

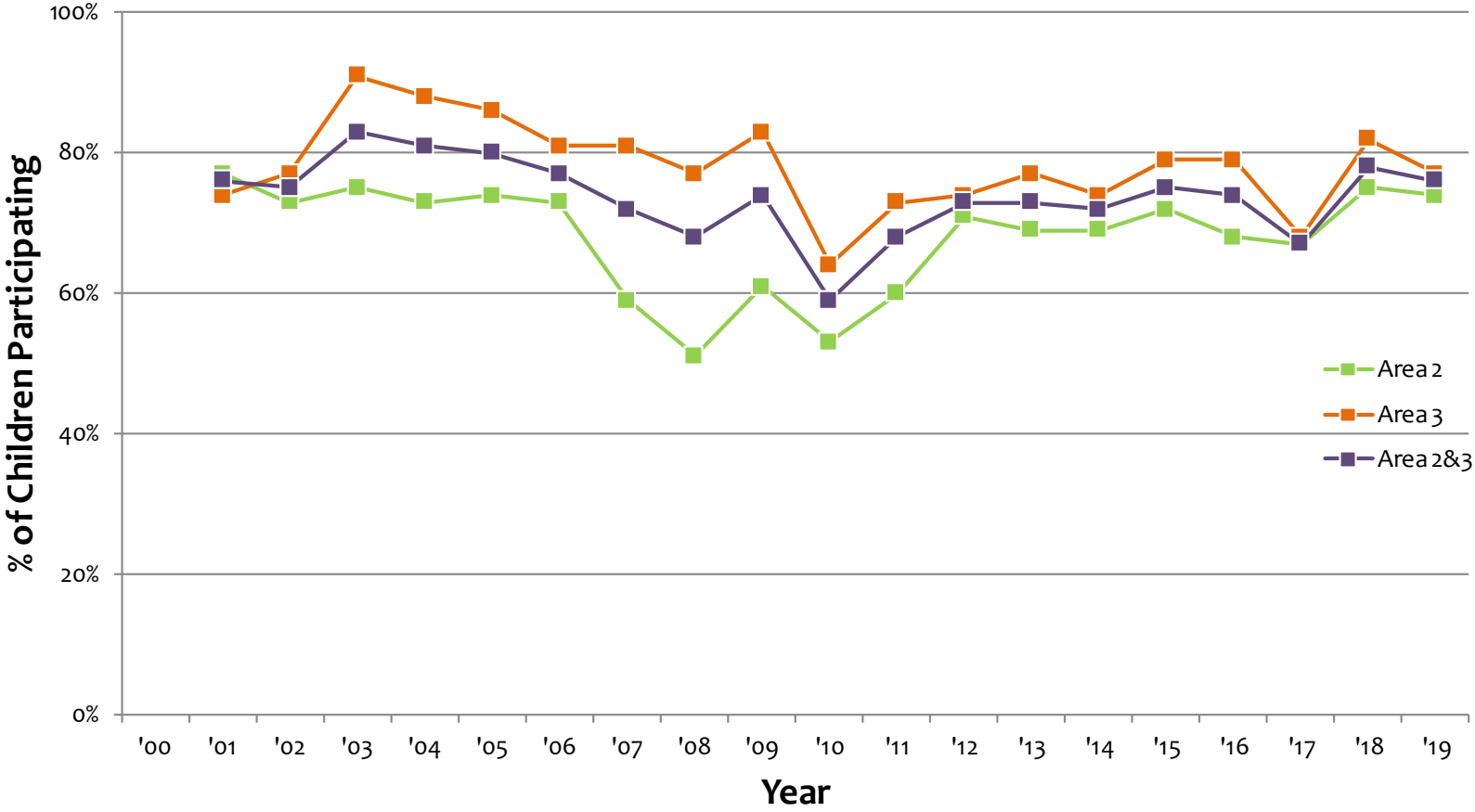


# Participation By Target Areas 6-36 Months

**Children Participating in Blood Lead Level Testing By Areas**

	2019		2018
Area	Number of Children Contacted	Percent of Children Participated	Percent of Children Participated
Area 2	66	74% (49)	75% (50)
Area 3	82	77% (63)	82% (50)
Area 2 & 3	148	76% (112)	78% (100)

# Percent Participation by Area



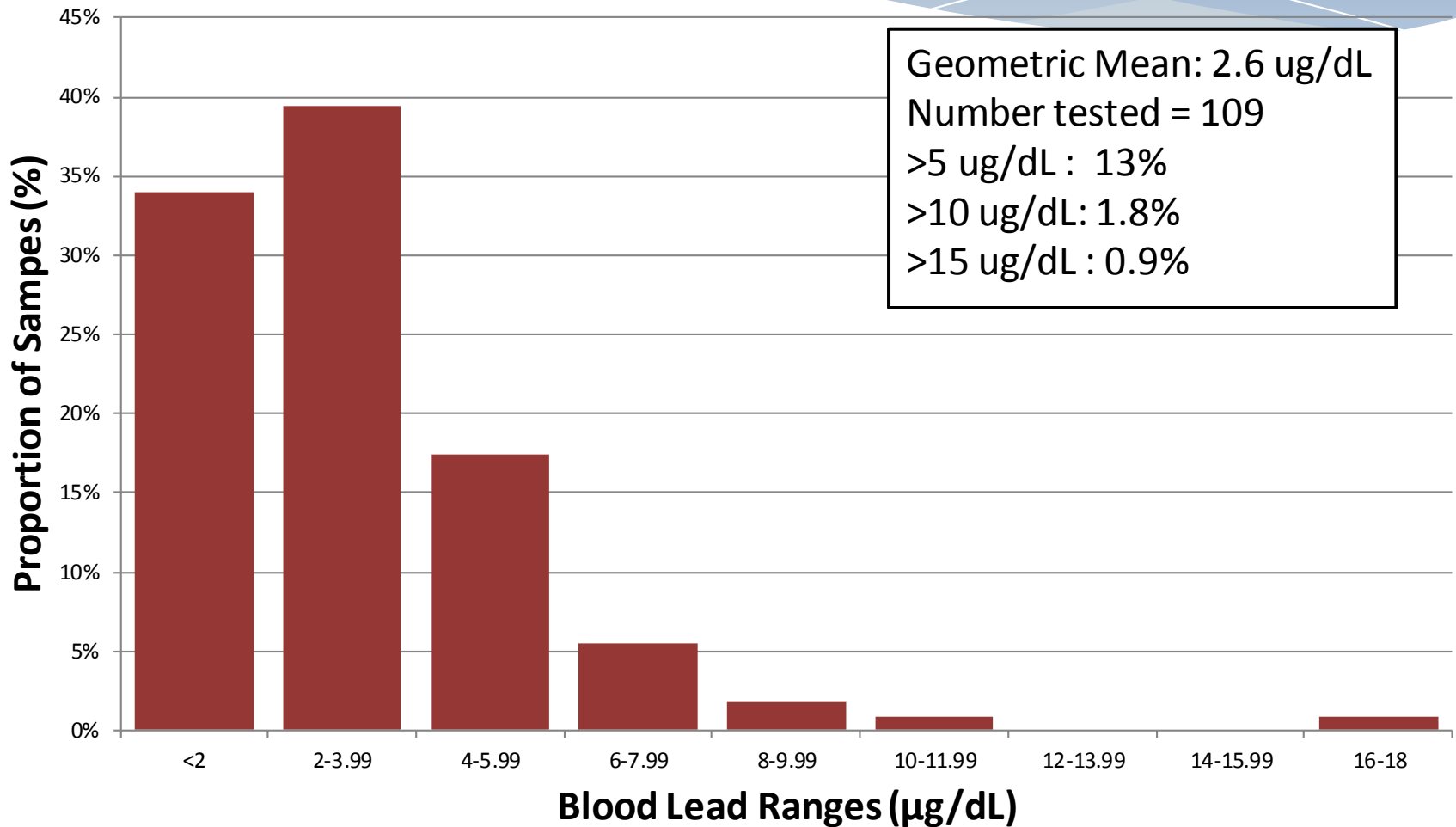
# Blood Lead Level Threshold

- \* There is **no safe blood lead level threshold**
- \* Blood lead levels of 1-2  $\mu\text{g}/\text{dL}$  are associated with adverse health outcomes particularly in children
- \* BLLs of children who live in lead contaminated environments are typically highest between ages 6 to 36 months
- \* Canadian children 3-5 years old had geomean blood lead levels at 0.67  $\mu\text{g}/\text{dL}$  in 2015 \*\*

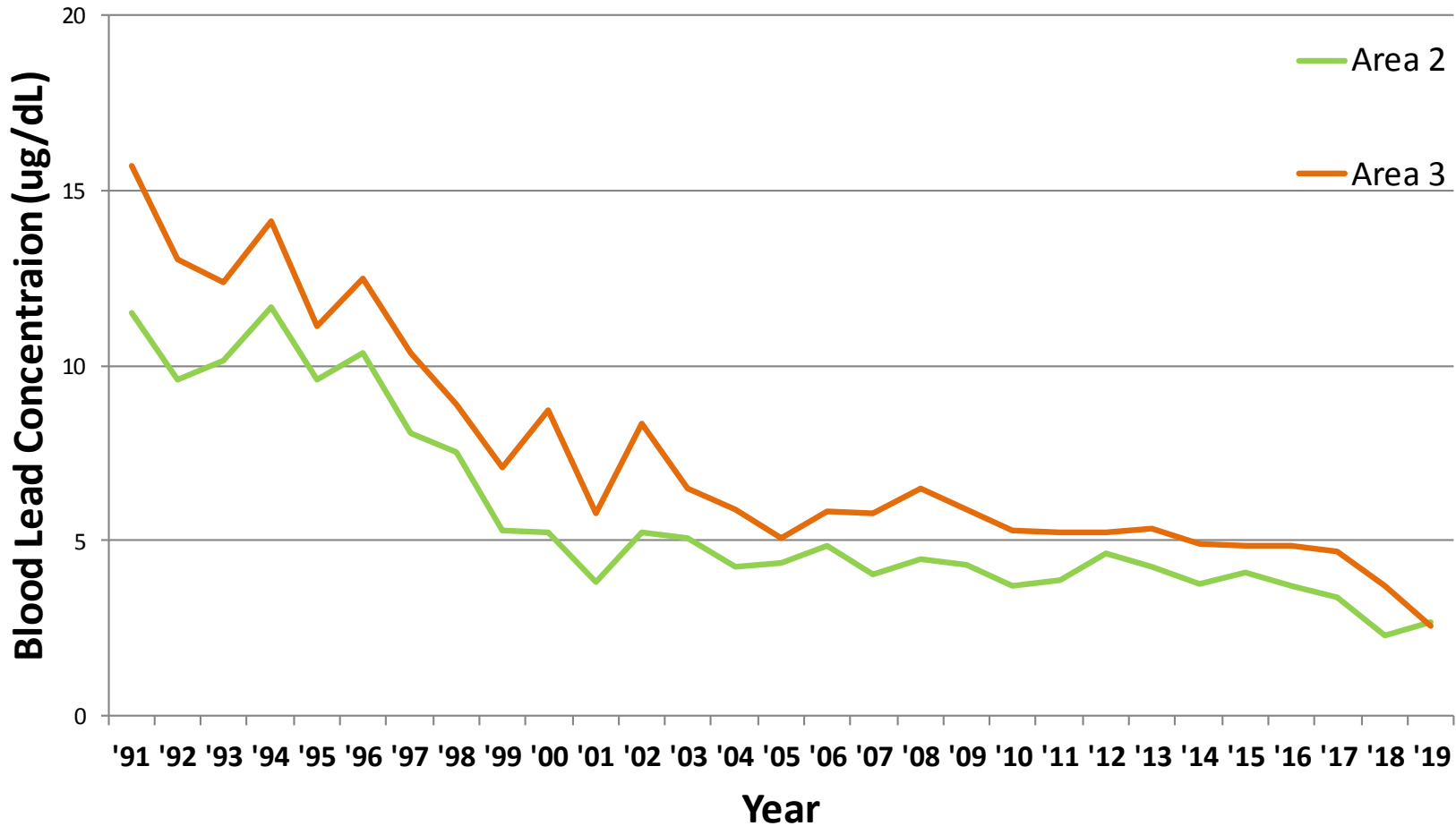
\*\*note that Trail children's geomean reflects ages 6-36 months



# Range of Blood Lead Levels for Areas 2&3



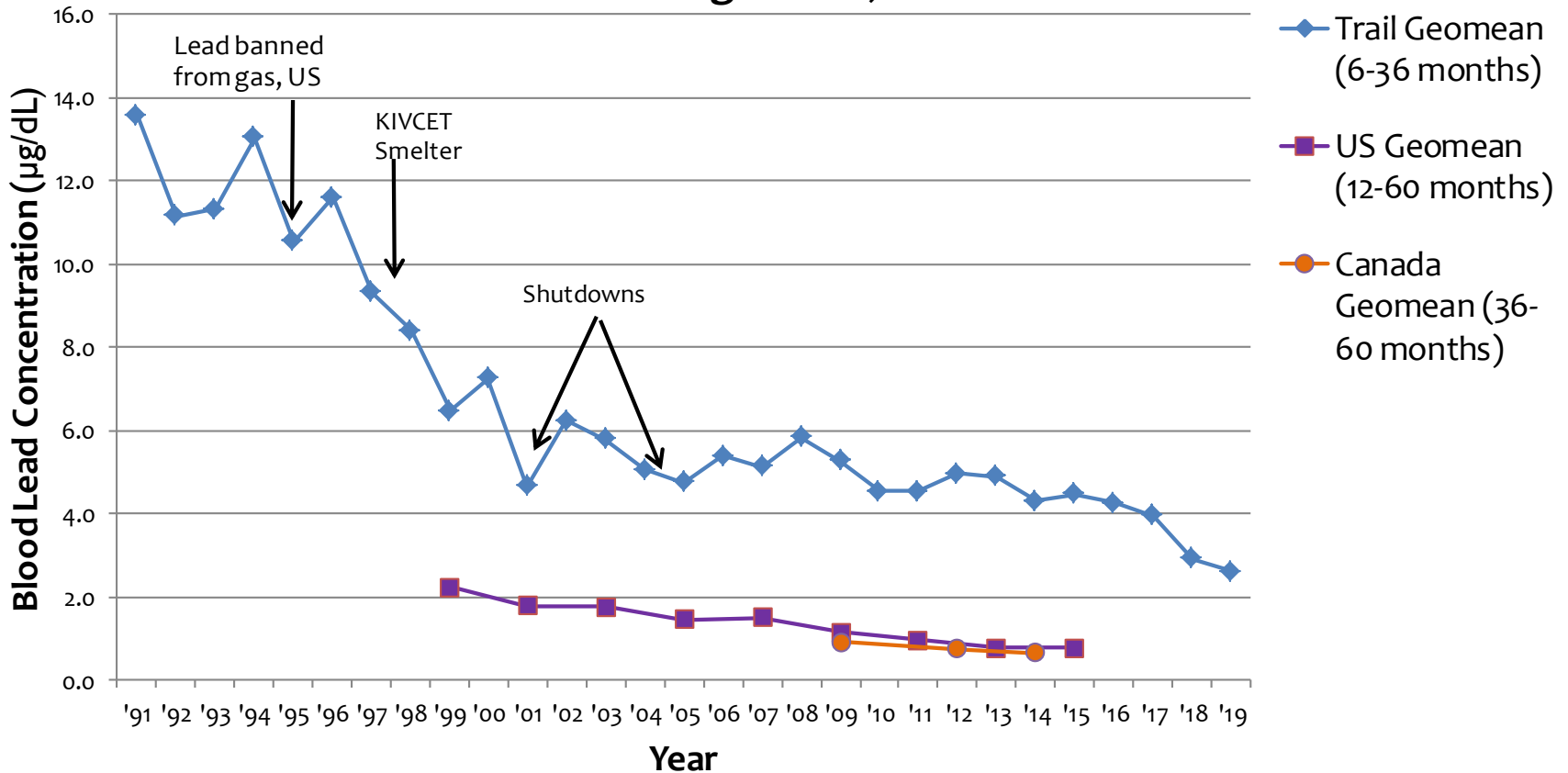
# Trend of Blood Lead Geomean by Area Years 1991-2019



# Blood Lead Levels

## Trail, Canada & U.S. Data

**Mean Blood Lead Levels  
for Children living in Trail, Canada and U.S.**



<sup>1</sup> Health Canada

<sup>2</sup> US Centre for Disease Control

# Concluding Messages

- \* In 2019 the participation was 75% for Areas 2 & 3
- \* The children's blood lead geometric mean at 2.6  $\mu\text{g}/\text{dL}$  was similar to the previous year's mean (2.9  $\mu\text{g}/\text{dL}$  2018)
- \* The geomean blood lead levels for Trail area children are decreasing over time, but continue to demonstrate evidence of exposure to lead in the environment

# Thank You

