

# Trail Area Health & Environment Committee



## Minutes

**Meeting: Tuesday, November 26, 2019, 7:00 p.m.**  
**City of Trail – Committee Room #2, Spokane St. Entrance**

---

### **Committee Members in attendance:**

Lisa Pasin, Chair, City of Trail  
Sandy Santori, Alternate Chair, City of Trail  
Lynn Miller, Interior Health  
Clare North, Teck Trail Operations  
Dan Bouillon, Teck Trail Operations  
Dr. Karin Goodison, Interior Health MHO

Cassandra Caunce, BC Ministry of Environment  
Cyra Yunks, Village of Warfield  
Marylynn Rakuson, Community Member  
Julia Stockhausen, Community Member  
Ron Joseph, Community Member

### **Others in attendance:**

Tara Bullanoff, Interior Health  
Christina Yamada, Interior Health

Erin Fazzino, Interior Health

### **Program Team in attendance:**

Michelle Laurie, THEC Facilitation Lead (notes)  
Andrea McCormick, SNC-Lavalin Inc.

Jeannine Stefani, Interior Health  
Meghan Morris, Interior Health

### **WELCOME and INTRODUCTIONS**

- Mayor Lisa Pasin, THEC Chair, opened the meeting with a round of introductions. She welcomed new THEC members Lynn Miller, Cassandra Caunce, Tara Bullanoff, and welcomed back program staff member Jeannine Stefani. She thanked Cheryl Whittleton and A.J. Downie for their service.
- Mayor Pasin followed with reflections on her one-year in office and chair of THEC. THEC continues to evolve and build on its thirty-year history (THEC was formerly the Trail Lead Task Force). She expressed the goal of keeping THEC relevant, impactful and productive.

### **MEETING MINUTES**

- Minutes from the THEC meeting, September 19, 2019 were approved.

### **PRESENTATIONS, REPORTS, DISCUSSIONS & RECOMMENDATIONS**

#### **Presentations**

#### **Blood Lead Clinic Results**

**Presenter: Dr. Goodison, MHO**

- Dr. Goodison presented the Blood Lead Levels in Trail for Fall 2019. The geometric mean for Trail and Rivervale is 2.6 micrograms per decilitre. The presentation is attached.
- The draft media release was then shared by Michelle Laurie for comment and approval. The draft is attached and was released by the City of Trail on November 27<sup>th</sup>, 2019.

#### **Inflammatory Bowel Disease (IBD) follow up from June THEC meeting**

**Presenter: Dr. Goodison, MHO**

- Dr. Goodison shared the IBD summary prepared. The summary (attached) will be uploaded to thep.ca under Resources ➡ Reports.

#### **Fugitive Emissions Reduction Update**

**Presenter: Keith Klimchuk, Teck Trail Operations**

- The presentation discussed what fugitive dust is, current fugitive dust reduction initiatives at Teck Trail Operations and next steps for continuous improvement (attached). This was followed by questions.

### **Program Reports & Updates:**


#### **Air Quality – Keith Klimchuk, Teck Trail Operations**

- Air Quality report attached.
- Mayor Pasin provided a summary from the October 30<sup>th</sup> Air Quality Technical Working Group (AQTWG) meeting including:
  - Partners discussed air quality concerns from their perspective including how they assess air quality.
  - Teck presented on SO<sub>2</sub> reduction programs. This was suggested as a potential topic for a presentation to THEC in 2020.
  - Members were asked to send ideas for topics of discussion for the four meetings in 2020.

#### **Family Health – Meghan Morris, Interior Health**

- Family Health report attached.

#### **Home & Garden – Andrea McCormick, SNC-Lavalin**

- Community program office report attached.
  - A community perception survey soliciting feedback on the increased soil / yard activity in Trail in 2019 was completed in October. Respondents were overwhelmingly supportive of the yard remediation program. The summary (attached) will be uploaded to thep.ca under Resources  Survey Results.

#### **Community Check-In - All community members**

- Marylynn Rakuson asked about the status of community composting as well as educational workshops for community on THEC/THEP.
  - Mayor Pasin responded that a joint (RDKB and RDCK) composting site is being looked at in the Salmo area; however, it is still under review.
  - Michelle Laurie will follow up on the educational workshops to gain a better understanding of the request and potential next steps.
- Ron Joseph asked about historical smoke easements on Trail properties and if these are still necessary given current regulations and processes taking place. Clare North will look for information that was noted on this in minutes of the former property issues working group.
- Clare North from Teck informed members that the alley dust sampling pilot is in progress and she will share the results when available.

#### **Program Planning & Operations – Michelle Laurie, THEC Lead Facilitator**

- Meeting dates for 2020 will be proposed by a doodle poll. There are five THEC meetings per year. The first meeting will be in February.
- Thep.ca website has been transferred to Wordpress. Content is currently unchanged. An update is planned for 2020.
- The THEP team has communications training in December to review face to face communications.
- The *Lead & Your Family's Health* brochure is currently being updated. A new brochure to explain the Soil Remediation Program is under development.
- Knowledge sharing with BC CDC, IH and THEP is taking place to support coordination of services (reduce overlap and communicate effectively) for children with elevated blood lead levels in Trail.

#### **Executive Report - Lisa Pasin, THEC Chair, Mayor, City of Trail (5 mins)**

- A meeting was held on November 20<sup>th</sup> to review the MHO's blood lead clinic results presentation, draft a media release to present to THEC and IBD document.
- Scheduling for Executive Meetings has changed to be as needed as well as at least a week in advance of the THEC Meetings.

**NEXT THEC MEETING:** February tbc, 2020.

# Blood Lead Levels in Trail Fall 2019

Population Health,  
November, 2019



Interior Health  
*Every person matters*

# Objective

- \* Overview of blood lead levels tested in fall 2019
- \* Comparison of mean blood lead levels in 2019 to previous years

# Who Was Tested in 2019?

## Target Group

- \* Children aged 6-36 months, living in City of Trail or Rivervale (Area 2/3)



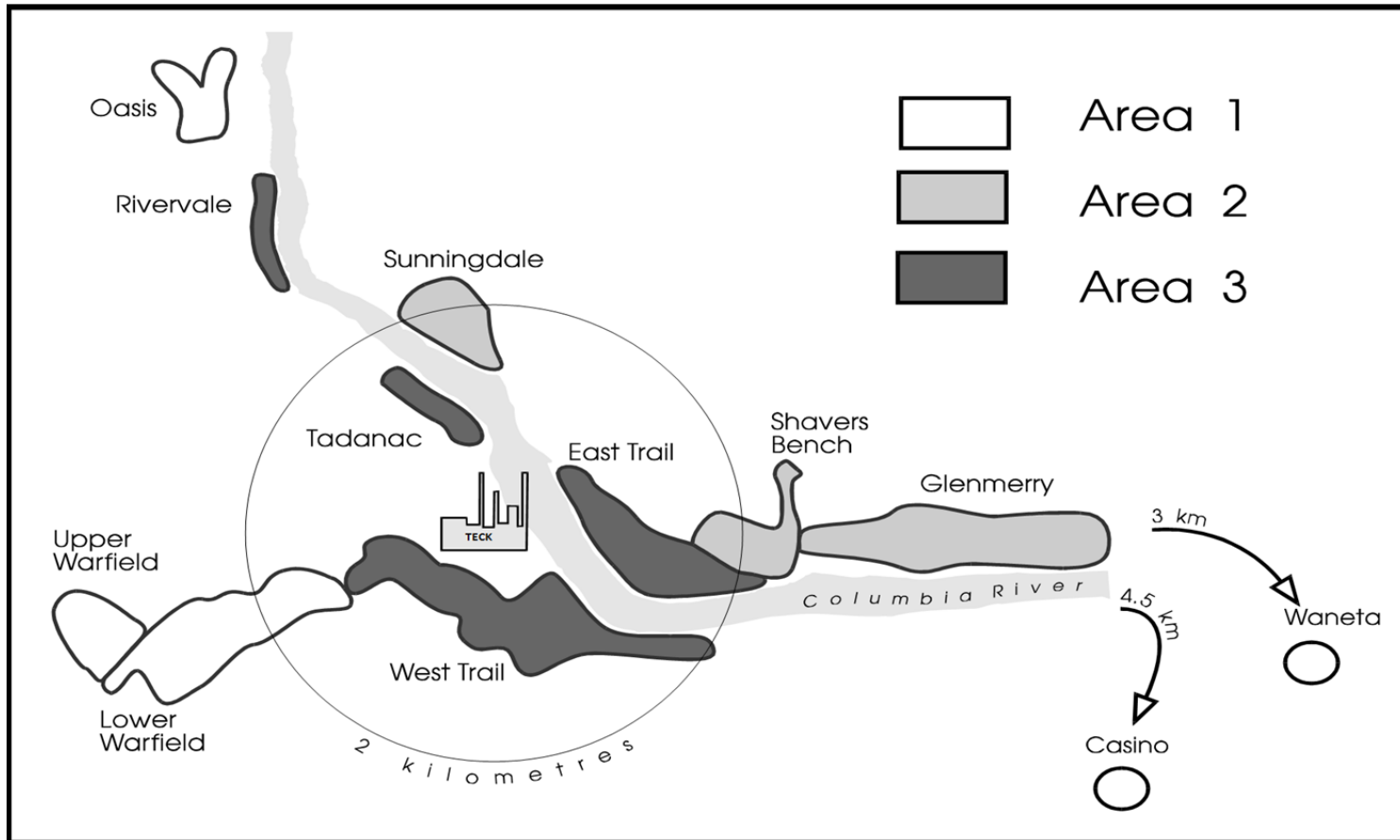
# Additional Testing

These results do not contribute to the yearly analysis

- \* Children new to the area, up to the age of 5 years old
- \* Children with previous enhanced support follow up who are now over 36 months old
- \* Children whose parents requested testing for their child from outside target area and age range



# “Areas” & Neighbourhoods

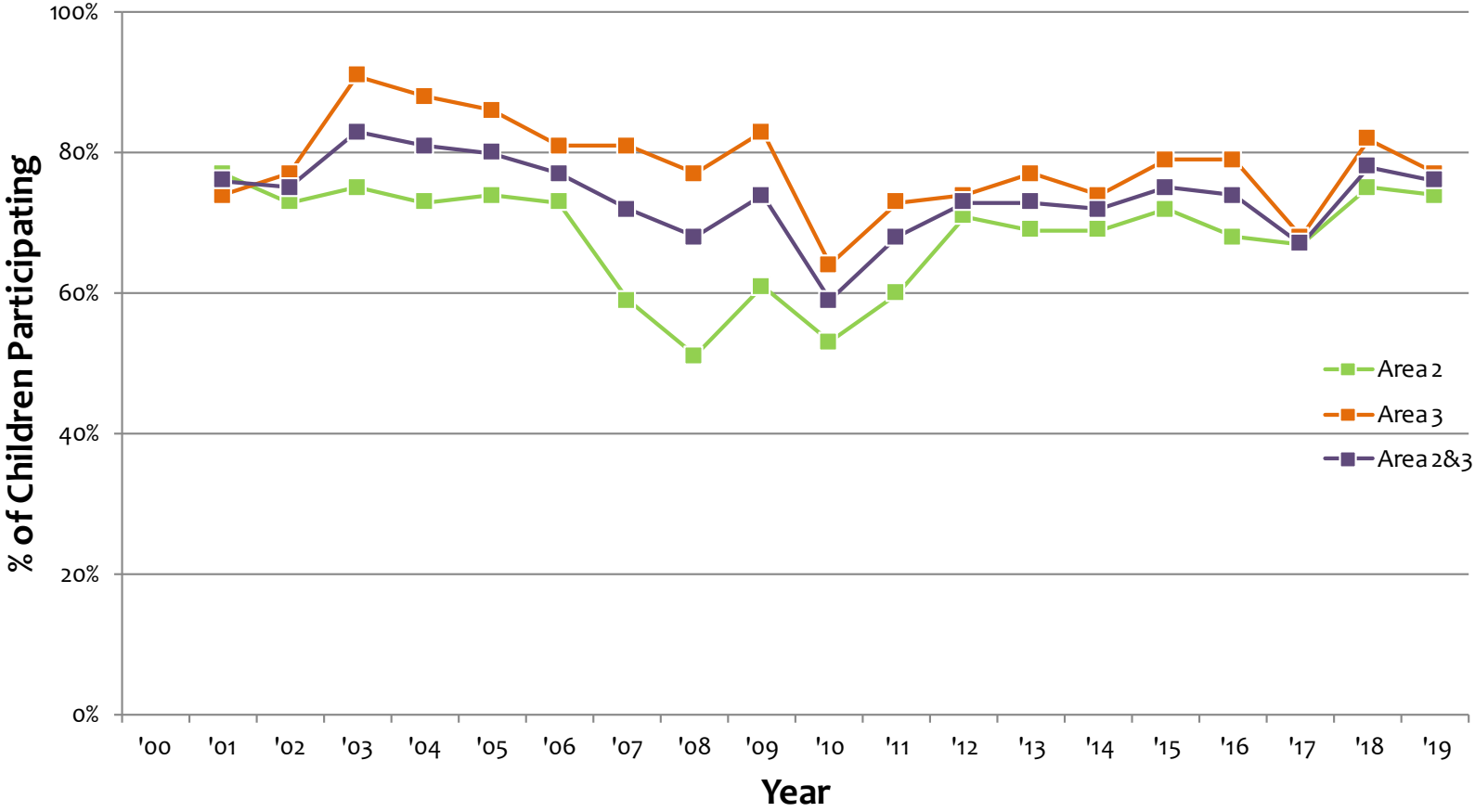


# Participation By Target Areas 6-36 Months

**Children Participating in Blood Lead Level Testing By Areas**

	2019		2018
Area	Number of Children Contacted	Percent of Children Participated	Percent of Children Participated
Area 2	66	74% (49)	75% (50)
Area 3	82	77% (63)	82% (50)
Area 2 & 3	148	76% (112)	78% (100)

# Percent Participation by Area

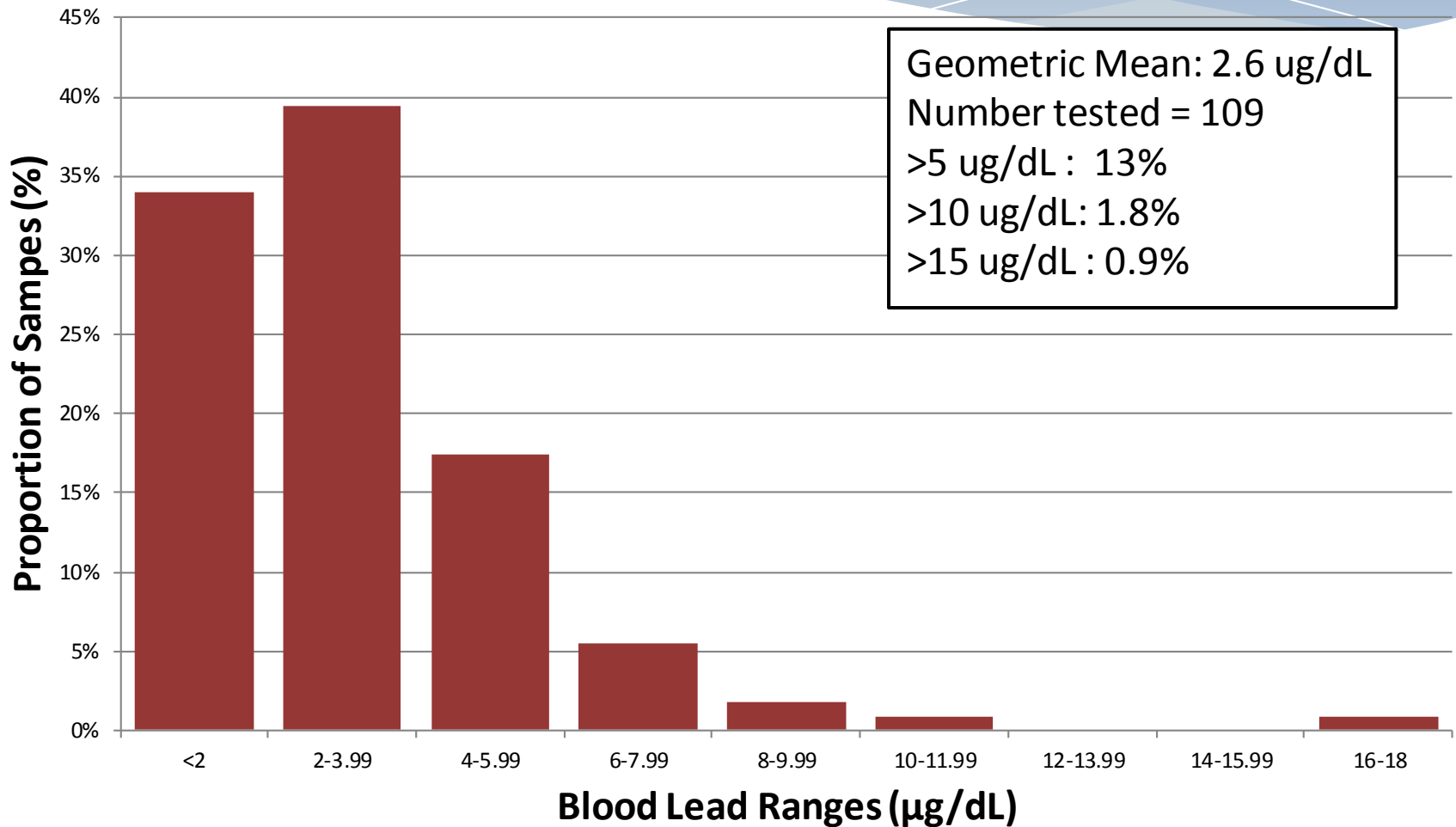


# Blood Lead Level Threshold

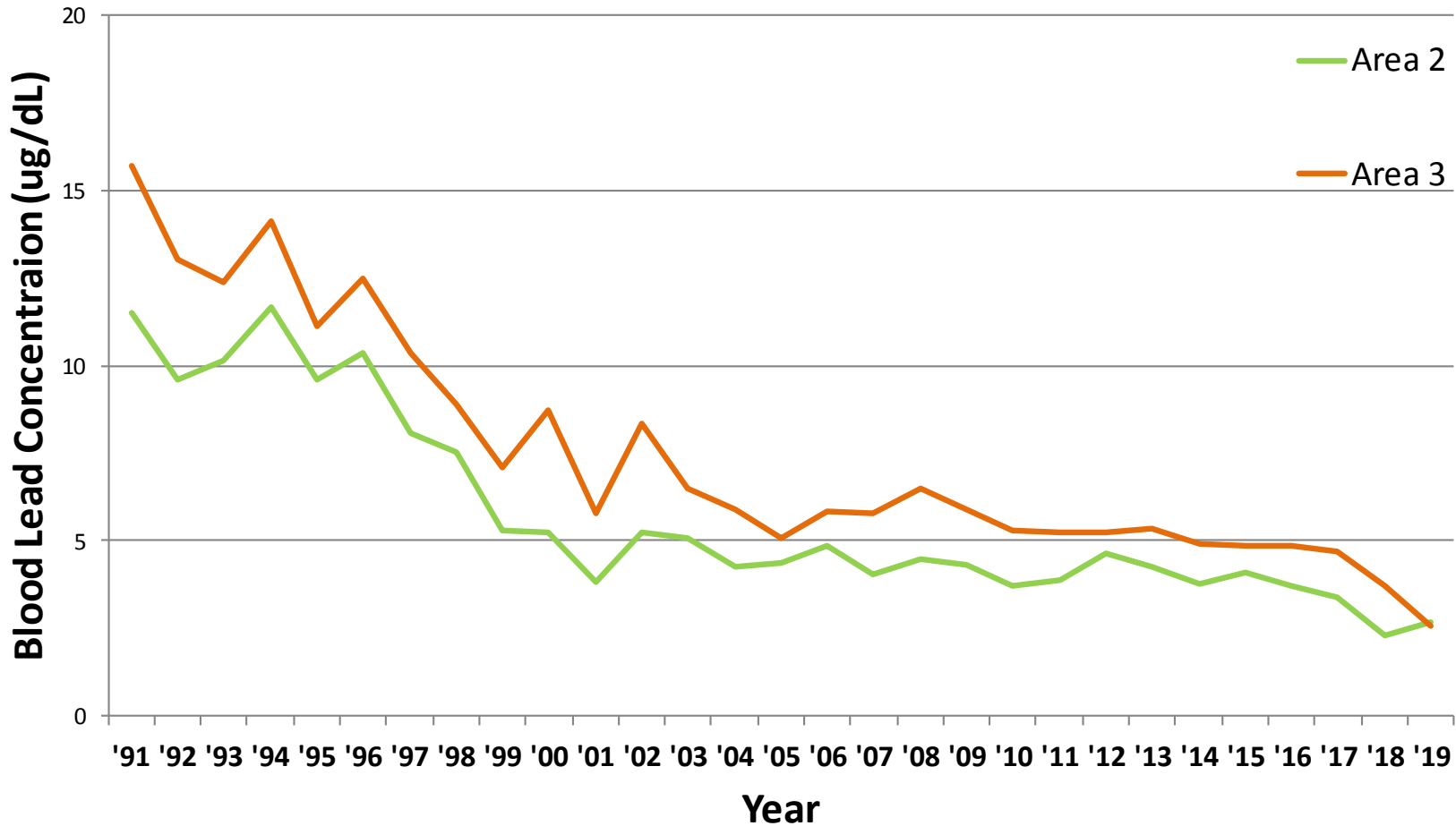
- \* There is **no safe blood lead level threshold**
- \* Blood lead levels of 1-2  $\mu\text{g}/\text{dL}$  are associated with adverse health outcomes particularly in children
- \* BLLs of children who live in lead contaminated environments are typically highest between ages 6 to 36 months
- \* Canadian children 3-5 years old had geomean blood lead levels at 0.67  $\mu\text{g}/\text{dL}$  in 2015 \*\*

\*\*note that Trail children's geomean reflects ages 6-36 months

# Range of Blood Lead Levels for Areas 2&3



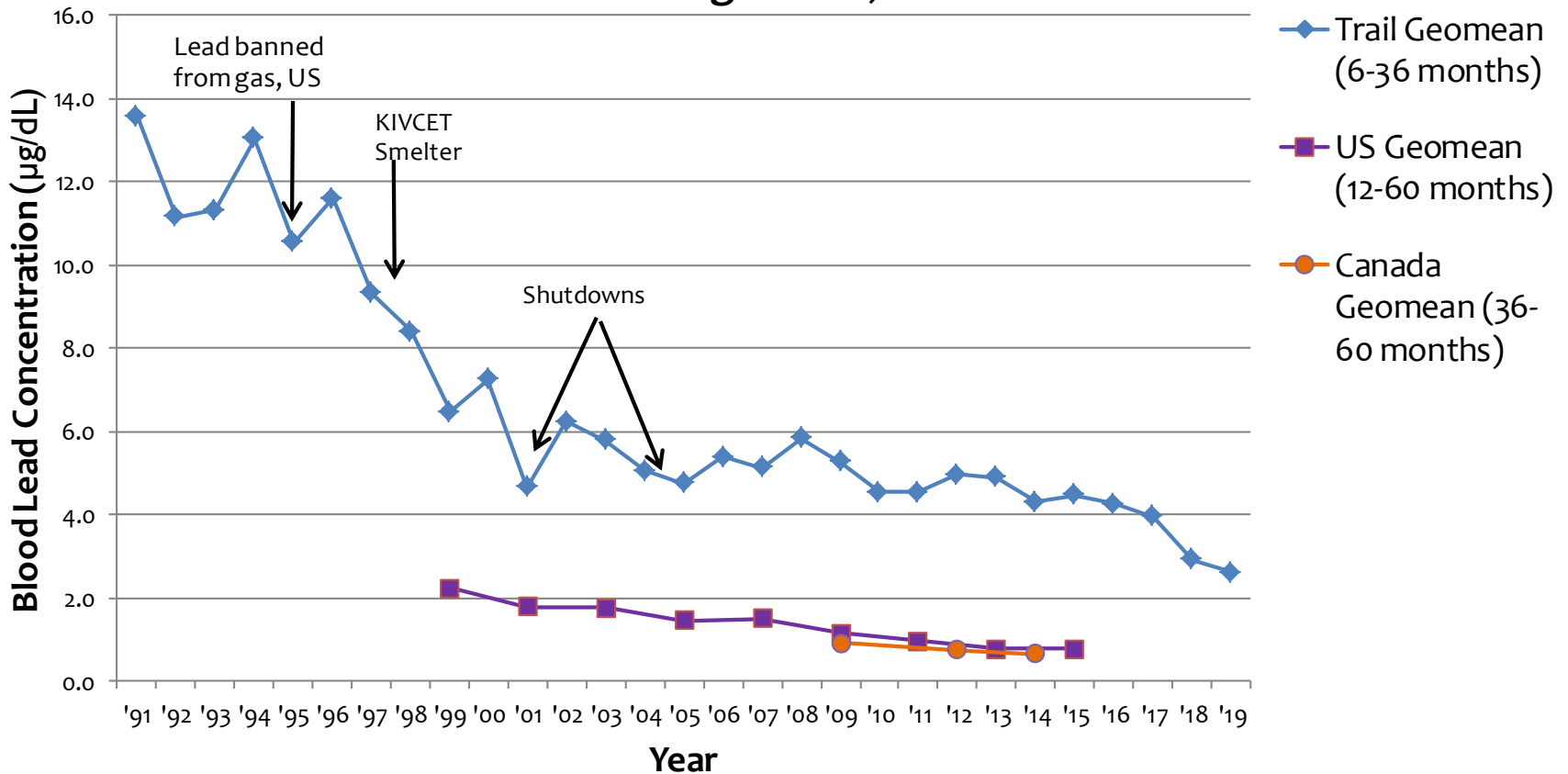
# Trend of Blood Lead Geomean by Area Years 1991-2019



# Blood Lead Levels

## Trail, Canada & U.S. Data

**Mean Blood Lead Levels  
for Children living in Trail, Canada and U.S.**



<sup>1</sup> Health Canada

<sup>2</sup> US Centre for Disease Control

# Concluding Messages

- \* In 2019 the participation was 75% for Areas 2 & 3
- \* The children's blood lead geometric mean at 2.6  $\mu\text{g}/\text{dL}$  was similar to the previous year's mean (2.9  $\mu\text{g}/\text{dL}$  2018)
- \* The geomean blood lead levels for Trail area children are decreasing over time, but continue to demonstrate evidence of exposure to lead in the environment

# Thank You



---

**TRAIL**  
A R E A  
**HEALTH &**  
**ENVIRONMENT**  
**COMMITTEE**



**NEWS RELEASE issued by THEC**  
**2019 Children's Lead Levels are the Lowest to Date**

November 26, 2019

Trail, BC - The results from the 2019 children's blood lead testing clinic show that the average blood lead level for children aged six to 36 months in Trail and Rivervale is 2.6 micrograms per decilitre. This is a decrease from the 2018 average of 2.9. There continues to be a very high participation rate for this voluntary program.

The THEC is continuing its efforts to further reduce children's blood lead levels and is encouraged by the decline. We strive for continuous improvement working to deliver programs aimed to reduce exposure to lead in the community, and specifically exposure to children.

The THEC Air Quality Program, managed by Teck Trail Operations, continues to reduce lead in the environment through the comprehensive Fugitive Dust Reduction Program. The 2019 year-to-date average for lead in community air is 0.12 micrograms per cubic metre, the lowest level to date.

**Quotes:**

Mayor Lisa Pasin, City of Trail, Chair of the Trail Area Health & Environment Committee says, "I am encouraged to see the 2019 blood lead level has remained below 3 micrograms per decilitre for a second year in a row. This year, the Trail Area Health and Environment Program committed to reach more families, including an increased focus on soil testing and yard remediation. A recent community survey showed overwhelming support for this expanded work. As blood lead levels decrease in our community, we continue to review and evolve our programs to further reduce children's potential exposure to lead and strive toward lower blood lead levels in the future."

"The 2019 blood lead geomean is similar to that seen in 2018 and confirms a decrease in blood lead levels from previous years. Even low levels of blood lead are associated with negative impacts on children's health, so we will continue to work with THEC with the goal of further reducing exposure to lead and other environmental contaminants in the community." Dr. Karin Goodison, Medical Health Officer, Interior Health.

Dan Bouillon, Manager, Environment at Teck Trail Operations says, "Teck Trail Operations' ongoing focus on our comprehensive dust reduction program continues to reduce lead in the community. In recent years, major investments and operational improvements have been made to reduce emissions from Teck Trail Operations. Our year-to-date 2019 ambient air quality results are on track to be the lowest annual measures ever recorded."

## **About the Trail Area Health & Environment Program**

The Trail Area Health & Environment Program (THEP) has five main areas of activity: Family Health, Home & Garden, Air Quality, Parks and Wildlands, and Property Development. THEP promotes a healthy environment through a comprehensive integrated program that successfully improves air quality and children's blood lead levels, and promotes the health of the community. The Air Quality Program reduces smelter emissions and makes the largest contribution to achieving health and environment goals. All our activities work together to get the best results – lower exposure, lower health risks, and a healthier environment.

The Trail Area Health & Environment Committee (THEC), a subcommittee of Trail City Council, oversees the program. THEC includes collaboration with the local community, Teck, the Ministry of Environment and Climate Change Strategy, and Interior Health. Over the past three decades children's blood lead levels in Trail have reduced and air quality has improved. THEC's partnership has been recognized as an effective collaborative model for safeguarding health and the environment. In 2011, the program received a Premier's Innovation and Excellence Award for Partnership. For more information please visit [www.thep.ca](http://www.thep.ca).

For more information, contact:

Mayor Lisa Pasin, City of Trail, Chair of the THEC  
(250) 364-0809 or [lpasin@trail.ca](mailto:lpasin@trail.ca)

Carol Vanelli Worosz, Community Engagement Leader – Public Relations, Teck Trail Operations  
(250) 364-4113 or [Carol.VanelliWorosz@teck.com](mailto:Carol.VanelliWorosz@teck.com)

## **Re-assessment of occurrence of Inflammatory Bowel Disease in Trail: A Medical Health Officer summary of the BC Centre for Disease Control 2018 study**

In follow up to the 2013 study, which looked at rates of Inflammatory Bowel Disease (IBD) in Trail from 2007-2011, a more detailed analysis inclusive of records from 2003-2015 was completed by the BCCDC in 2018.

### *Data sources and noted differences in 2018 and 2013 studies:*

Data sources included physician visits (MSP claims for IBD per 10 000 MSP registrants); hospitalisations (persons discharged from hospital with principal diagnosis of IBD/ 10 000 MSP registrants); and drug dispensations (persons to whom IBD-related drugs were dispensed per 10 000 MSP registrants). The original analysis was limited to individual records, while this review was able to link records by using disguised personal identifiers. The diagnostic codes differed between the two analyses.

New data looked at in 2018 was able to assess IBD rates across geographic zones within Trail and incident (new) severe cases of IBD by age, sex and period of time.

### *Overall findings:*

The 2018 study was able to demonstrate that the 2013 conclusion of higher levels of IBD related doctor visits and hospitalizations was largely related to the use of a non-specific diagnosis “other and unspecified noninfectious gastroenteritis and colitis”.

From 2010-2015 there is a clearly higher rate of doctor visits among Trail residents for Crohn’s disease, compared to the IH average rates. The onset of Crohn’s disease has occurred at a younger age in Trail than elsewhere in IH. Rates of ulcerative colitis are comparable to that in the rest of IH.

This study is unable to associate the higher rates of Crohn’s disease with any specific cause. Multiple factors may be at play, including smoking, diet, and the use of certain medications. There are no known associations of IBD with lead or metal dust.

### *Limitations of study:*

Limitations of the study are that the study used administrative data, which can be subject to bias based on diagnostic and prescribing practices. The data cannot take into account genetics/family relationships, work status or individual practices (eg smoking) as risk factors. The population of Trail is relatively small, so numbers of hospitalizations are very small.

### *Next steps:*

The BCCDC will undertake further analysis of the available administrative data on IBD in Trail. We will consider future opportunities to follow and investigate the Crohn’s disease rates in this community, given that this most recent (2010-2015) analysis indicates that this illness is occurring at higher rates and with earlier age of onset of severe disease than elsewhere in IH.

# Teck Trail Operations Fugitive Dust Update

November 26, 2019

**Teck**

# Overview

What is fugitive dust?

Current fugitive dust reduction initiatives

- Open areas of material mixing and handling
- Building emissions
- Road dust
- Monitoring

Next steps

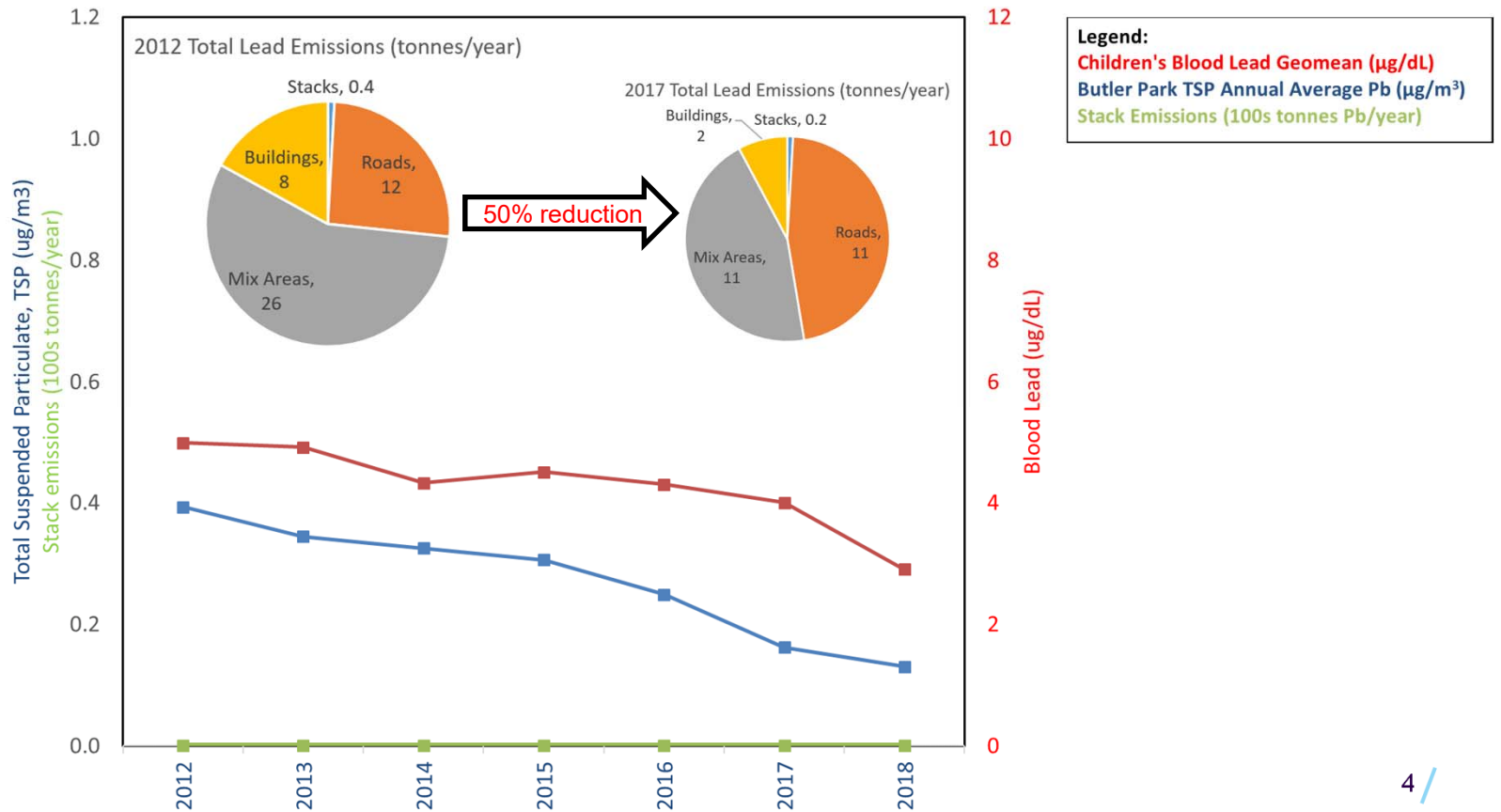
# What is fugitive dust ?

Fugitive dust is dust that escapes from stockpiles, open handling of materials, buildings and vehicle traffic on and offsite. Fugitive dust is not stack emissions.



# Why fugitive dust reduction?

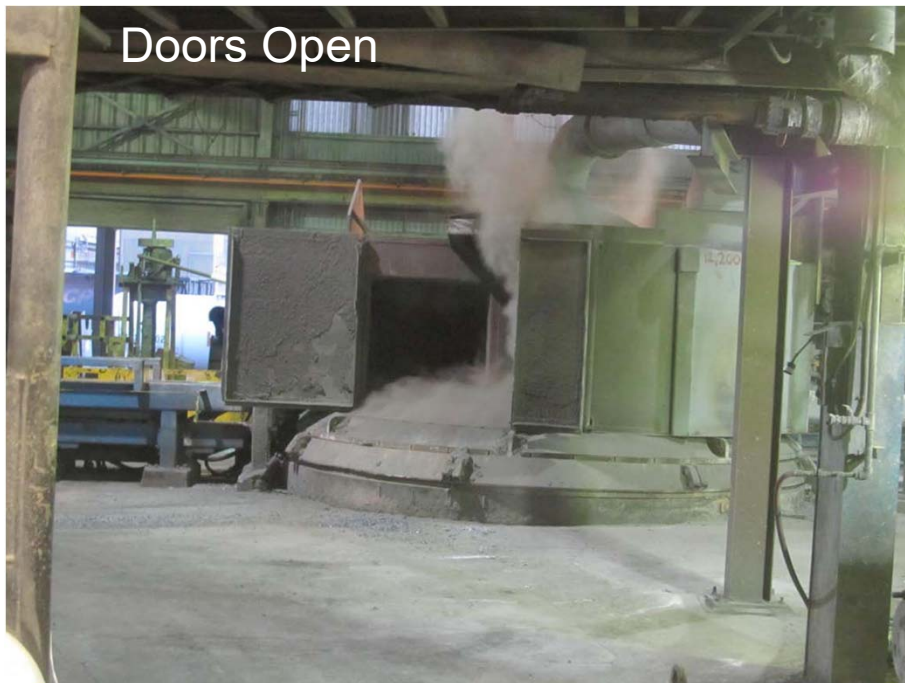
Reducing fugitive dust from Trail Operations has been shown to be the best approach for further reducing the levels of metals in the community.



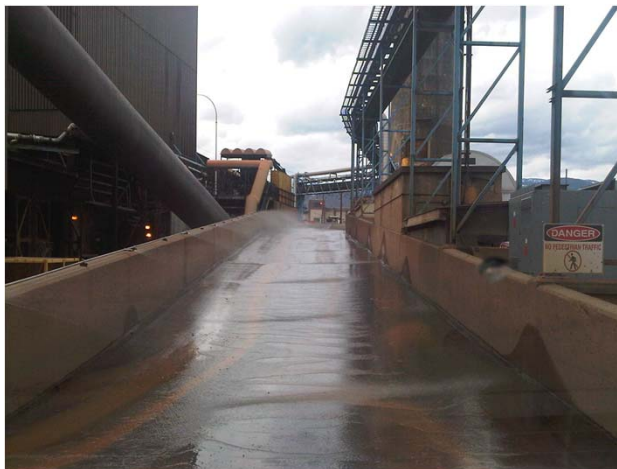
# Current fugitive dust reduction initiatives: Open areas of mixing and handling, Roaster pad dust management



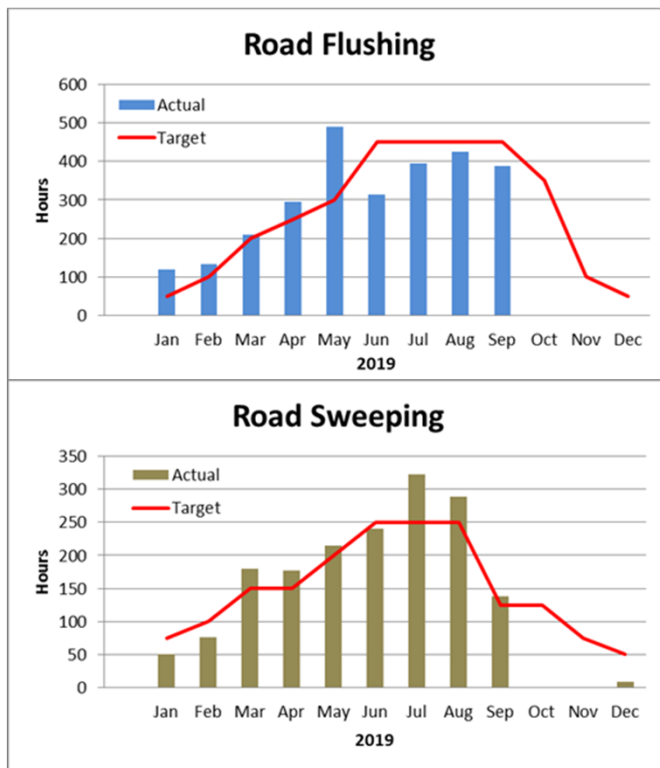
## Current fugitive dust reduction initiatives: Building emissions, Lead Refinery and No.2 pot emissions



# Current fugitive dust reduction initiatives: Road dust, Smelter wheel wash



# Current fugitive dust reduction initiatives: Road dust, metric is hours of cleaning



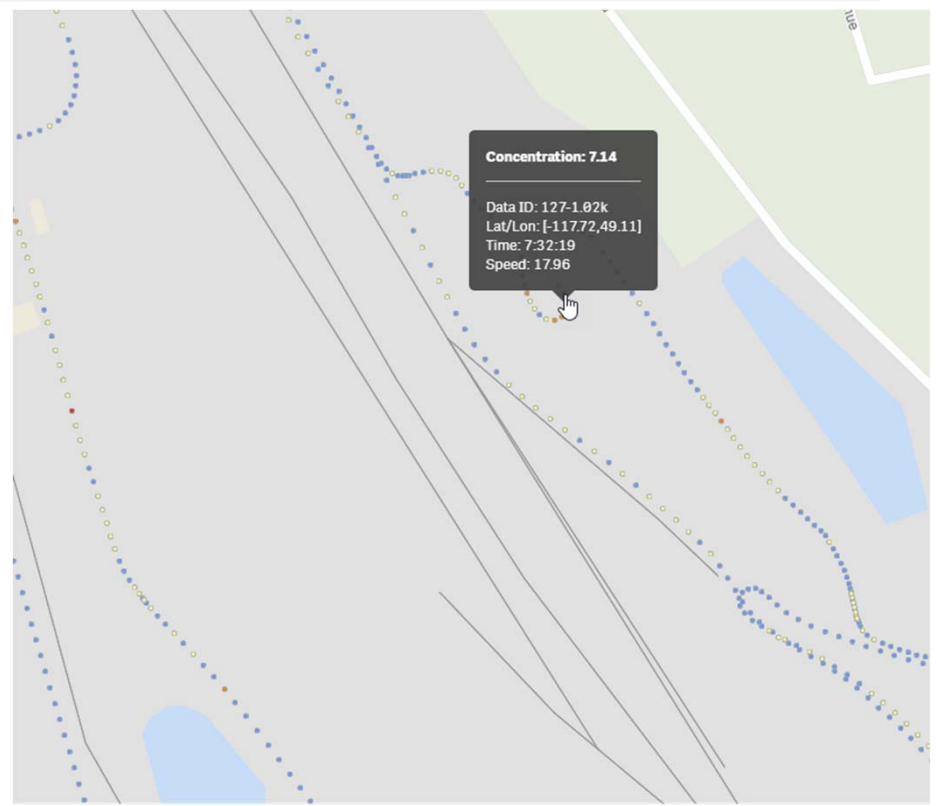
## Current fugitive dust reduction initiatives: Road dust, real-time road dust monitoring



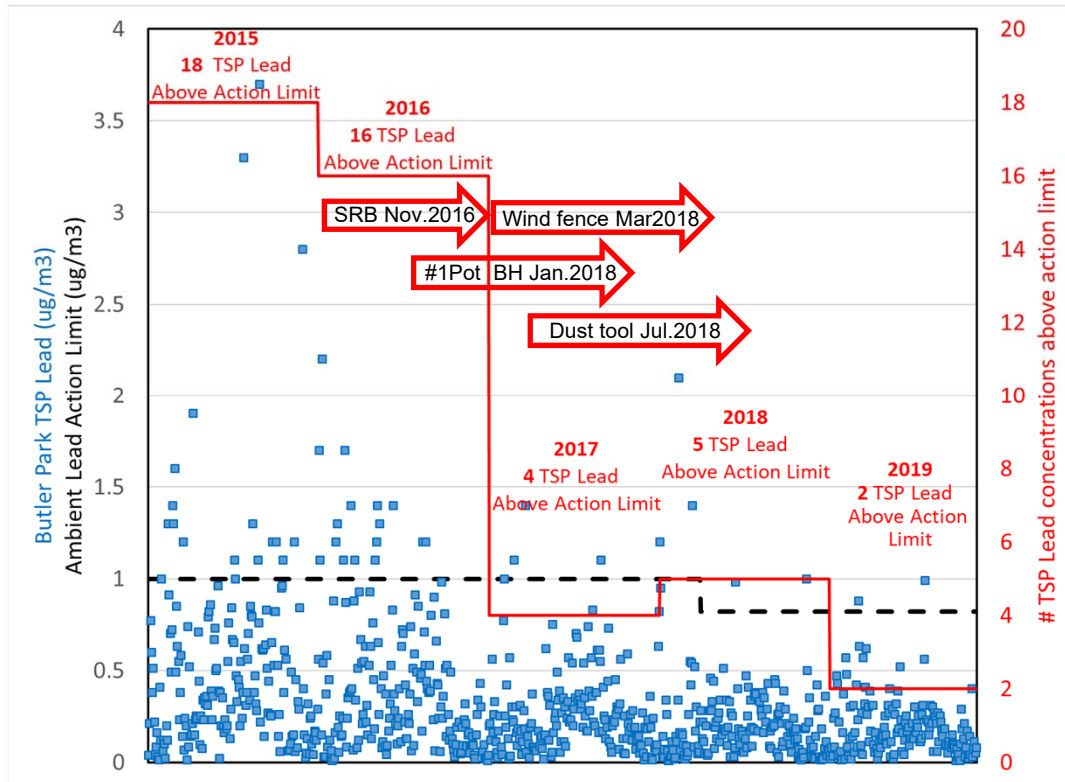
# Current fugitive dust reduction initiatives: Road dust, real-time road dust monitoring



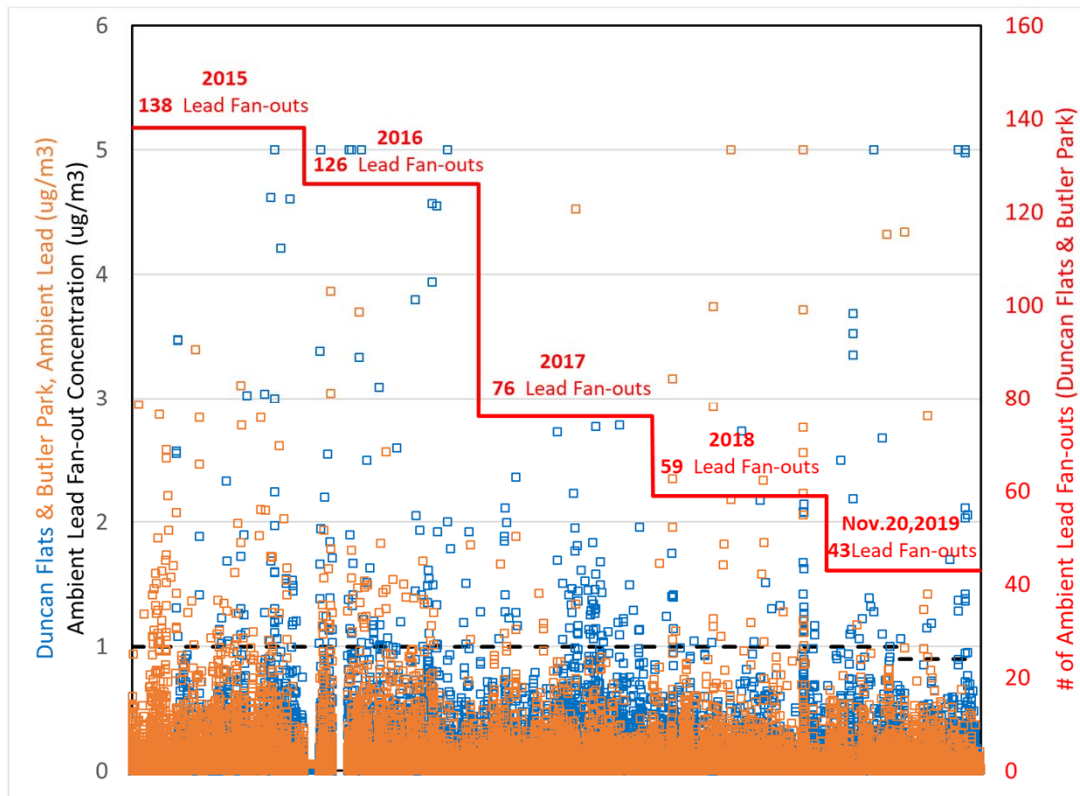
Teck



# Current fugitive dust reduction initiatives: Monitoring, routine TSP Lead monitoring



# Current fugitive dust reduction initiatives: Monitoring, ambient air fan-outs



# Current fugitive dust reduction initiatives: Monitoring, ambient air fan-outs



Teck

# Next Steps

## Monitoring

- Big data, analytics, machine learning to inform Capital Projects (\$/kg Lead removed)

## Capital Projects

- Continue to reduce material tracked onto roads (ie. wheels washes, road access, enclosures)
- Continue to reduce dusting from material stockpiles (ie. wind fencing, more work on Roaster pad)
- Continue to improve plant hygiene while at the same time reducing building fugitive emissions

## Continuous Improvement

- Lower alarm points based on improved performance
- Generate new ideas and solicit contributions to reducing dust

## Air Quality Report

November 26, 2019

### 1. Lead in Air:

Third quarter average for lead in air at Butler Park was  $0.118 \mu\text{g}/\text{m}^3$ , which is lower than third quarter in 2018 ( $0.149 \mu\text{g}/\text{m}^3$ ). The year-to-date average is  $0.117 \mu\text{g}/\text{m}^3$ , which remains below the THEC 2018 Annual Objective of  $0.2 \mu\text{g}/\text{m}^3$ .

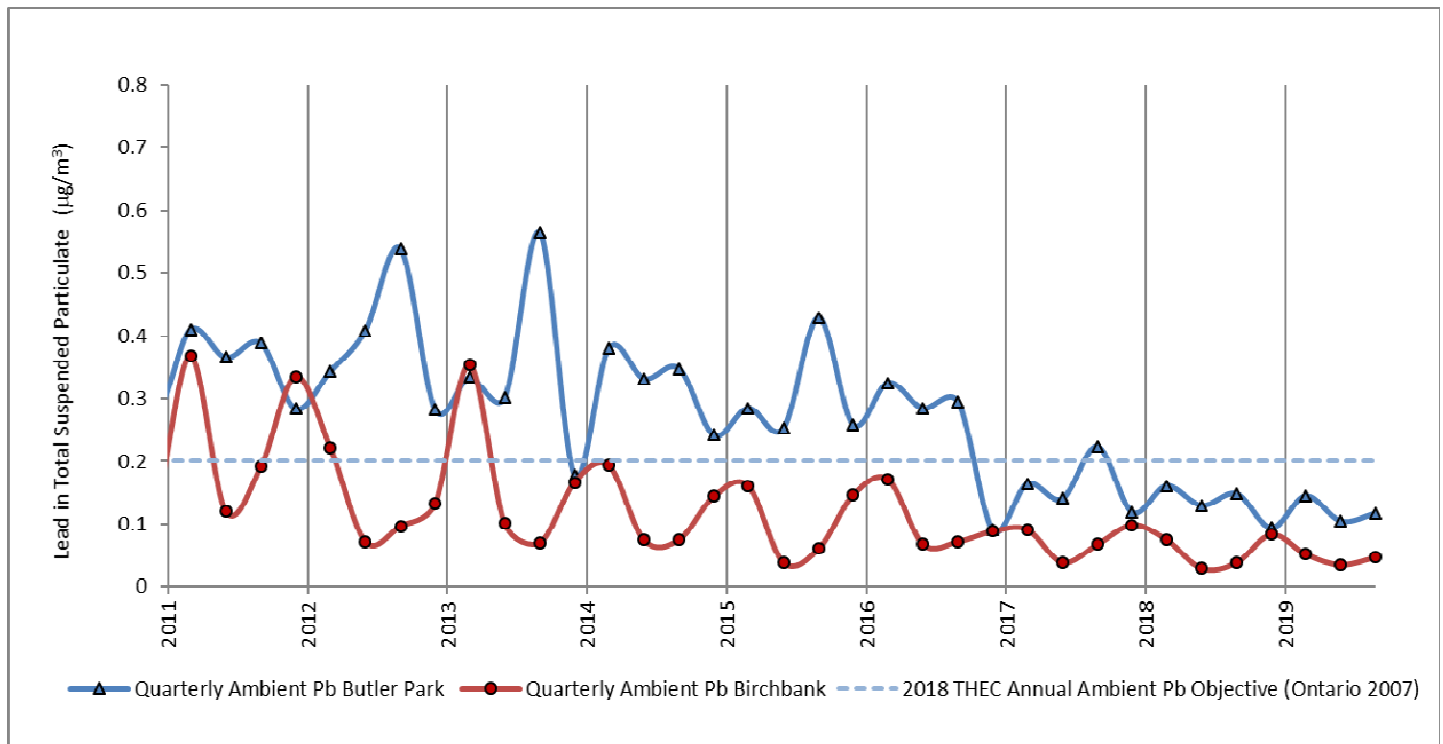


Figure 1: Quarterly monthly average lead at Butler Park and Birchbank stations (as total suspended particulate measured bi-daily)

The chart in Figure 1 shows quarterly averages for Lead in air for Butler Park (dark blue) and Birchbank (red), in comparison to the 2018 THEC Annual Ambient Lead in Air Objective (dashed line).

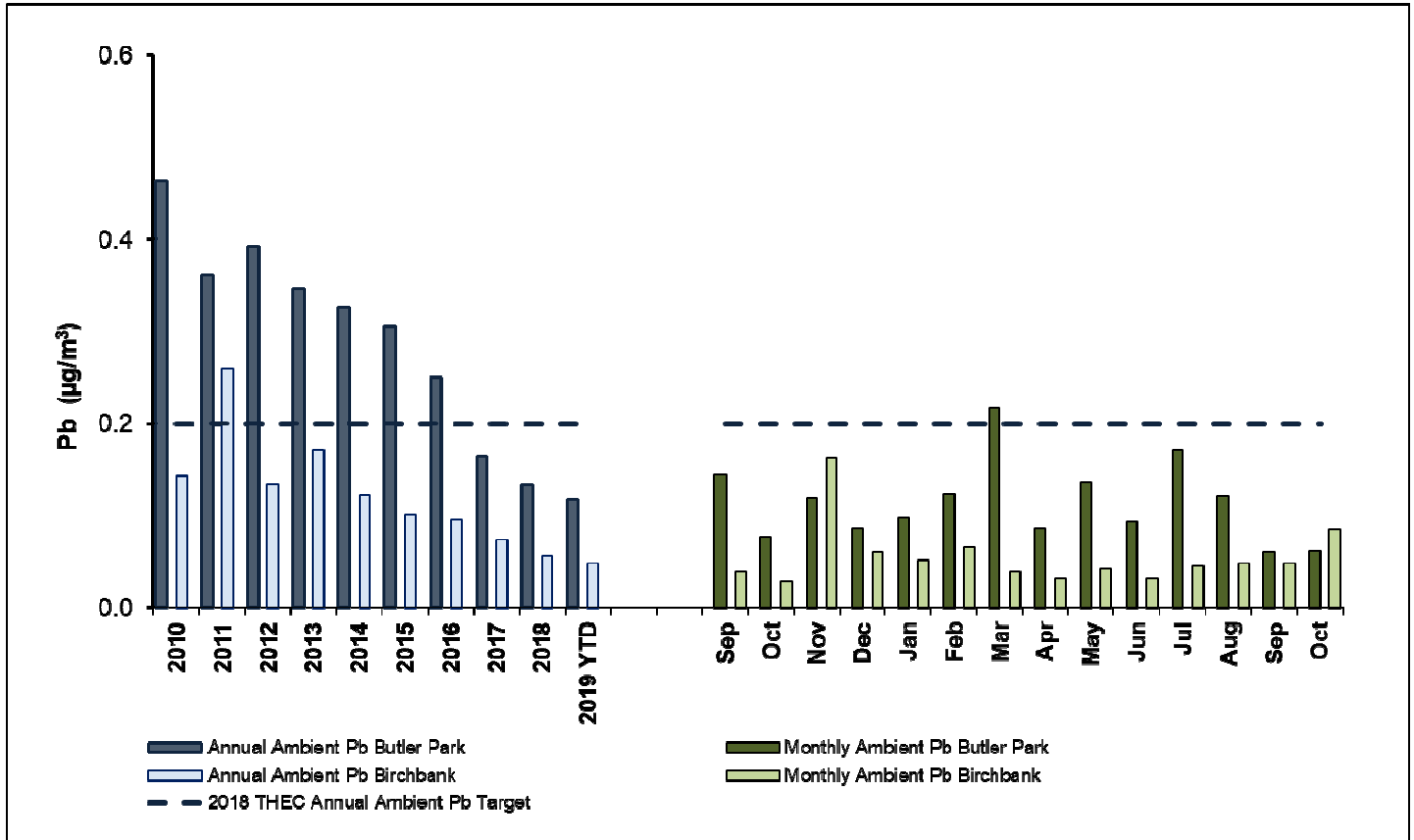


Figure 2: Annual and monthly average lead at Butler Park and Birchbank stations (as total suspended particulate measured bi-daily)

The chart in Figure 2 shows annual and monthly averages for Lead in air for Butler Park. Annual averages are shown on the left for Butler Park (dark blue) and Birchbank (light blue). Monthly averages for the past year are shown on the right for Butler Park (dark green) and Birchbank (light green). The 2018 THEC Annual Ambient Lead in Air Objective is shown as a dashed line. Monthly averages for Lead in ambient air are expected to have some variability due to season, weather, predominant wind direction and operational variance.

## 2. Arsenic in Air:

Third quarter average for arsenic in air at Butler Park was  $0.002 \mu\text{g}/\text{m}^3$ , which is significantly lower than the third quarter in 2018 ( $0.005 \mu\text{g}/\text{m}^3$ ). The year-to-date average is  $0.005 \mu\text{g}/\text{m}^3$  which remains below the THEC 2018 Annual Objective of  $0.010 \mu\text{g}/\text{m}^3$ .

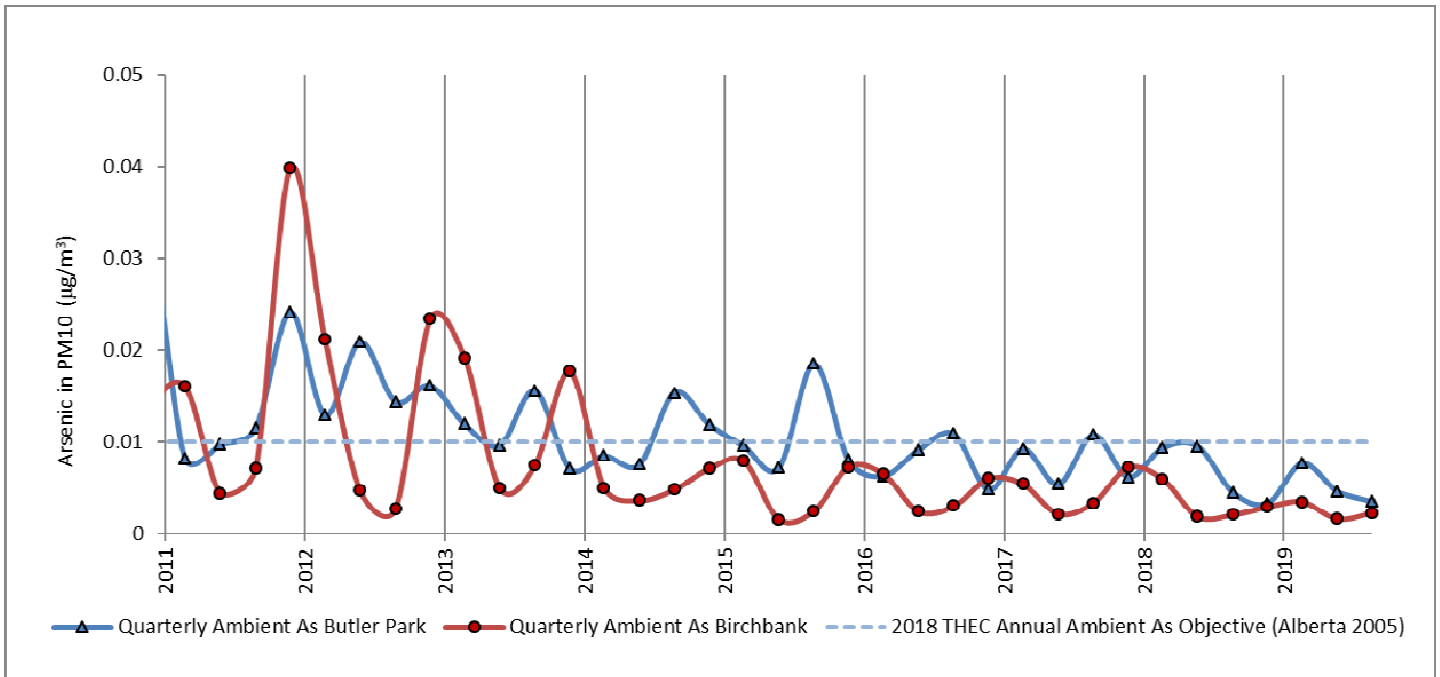


Figure 3: Quarterly average arsenic at Butler Park and Birchbank stations (as inhalable PM<sub>10</sub> fraction measured weekly)

The chart in Figure 3 shows the annual average for Arsenic in air (measured as inhalable PM<sub>10</sub> fraction) at Butler Park (blue) and Birchbank (red) in comparison to the 2018 THEC Air Quality Objective (blue line).

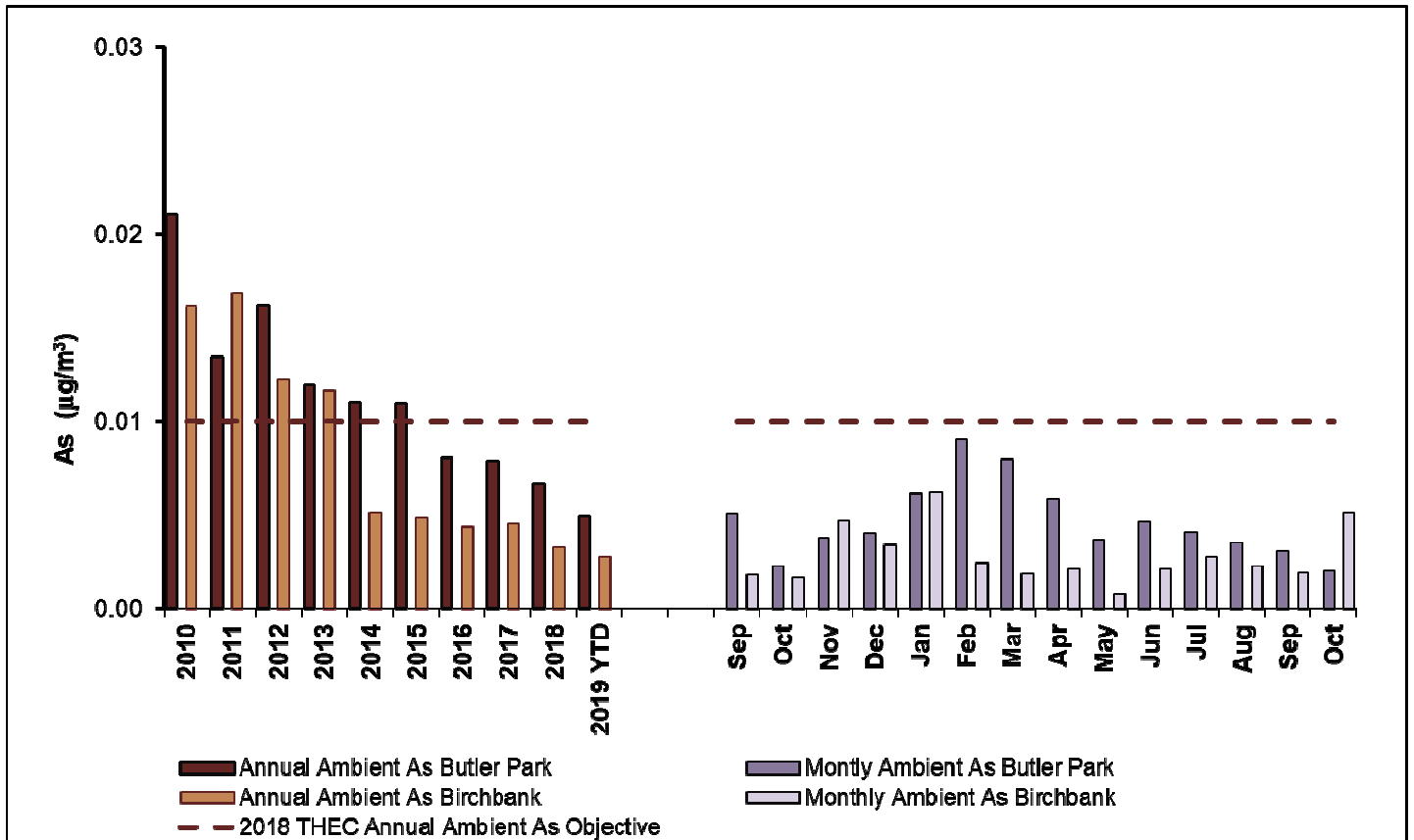


Figure 4: Annual and monthly average arsenic at Butler Park and Birchbank stations (as inhalable  $\text{PM}_{10}$  fraction measured weekly)

The chart in Figure 4 shows annual and monthly averages for Arsenic in air at Butler Park and Birchbank. Annual averages are shown on the left for Butler Park (dark brown) and Birchbank (light brown). Monthly averages for the past year are shown on the right for Butler Park (dark purple) and Birchbank (light purple). The 2018 THEC Air Quality Objective is shown as a dashed line. Monthly averages for Arsenic in ambient air are expected to have some variability due to season, weather, predominant wind direction, operational variance and sampling frequency.

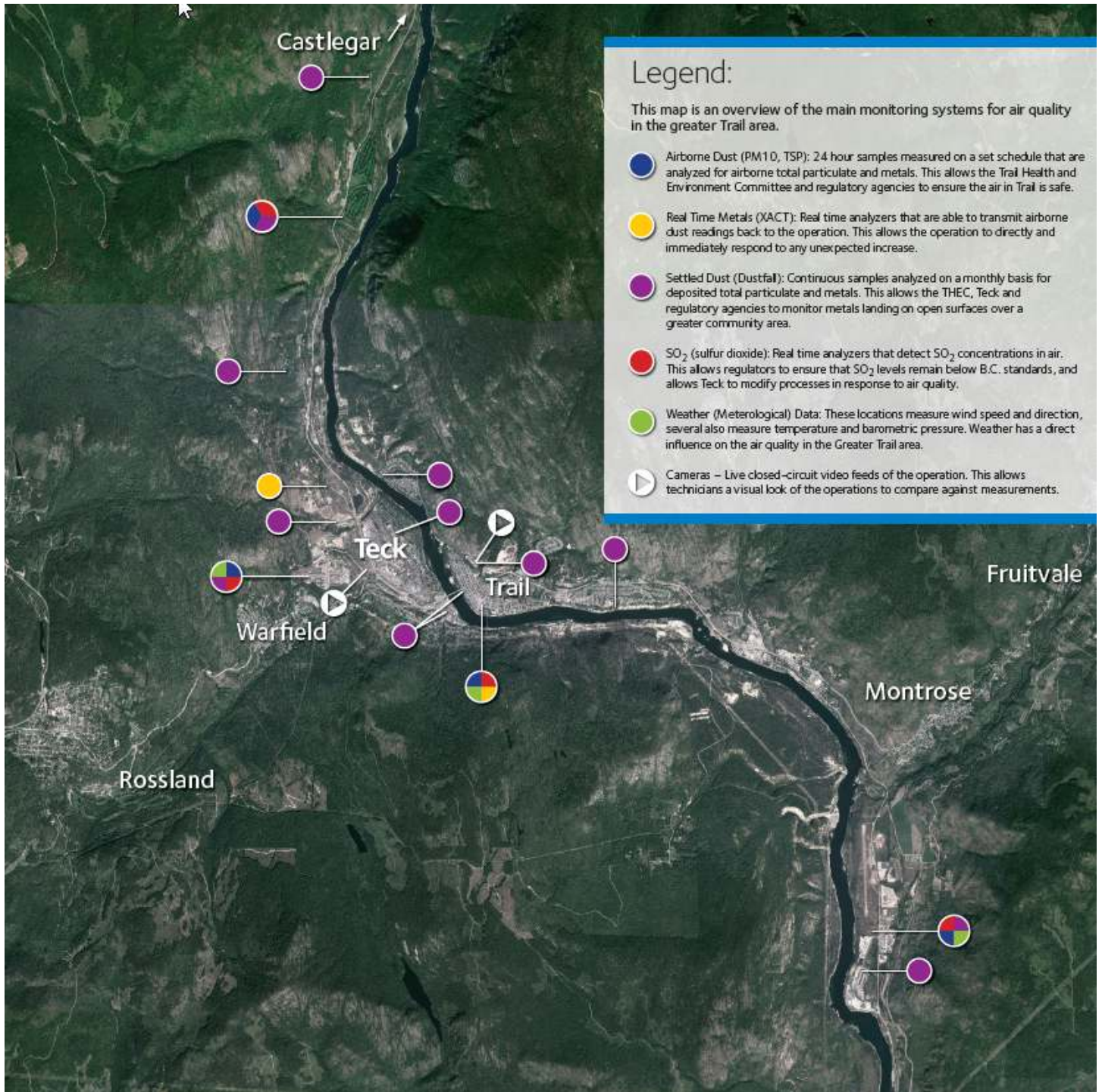


Figure 5: Teck Community Air Monitoring Stations



## FAMILY HEALTH REPORT

November 26, 2019

### RECENT HIGHLIGHTS

1. September Blood Lead Clinics completed.
2. Planning for February 2020 clinics
3. Healthy Family Visits
4. Community Outreach

---

### ADDITIONAL DETAILS

1. September 2019 Blood lead Clinics
  - Completed with good participation as per report provided by MHO.
  - Enhanced Family Health Services are currently being offered to eligible families based on individual children's results.
2. Preliminary planning under way for February 2020 Clinics.
  - Currently 47 children invited.
  - 2 clinic days to be scheduled in Mid-February.
3. Health family Visits
  - 61 Family Health Visits completed to date in 2019
  - 3-4 more to be scheduled in December.
  - 7 visits declined
  - 15 visits done since last THEC meeting on September 19<sup>th</sup>
  - 30 outstanding visits presently-they will carry over into 2020
4. Community Outreach
  - Attending Building Beautiful Babies Program monthly
  - Attended Trail Early Years Table Meeting on October 23<sup>rd</sup>

November 26, 2019

**HIGHLIGHTS**

1. Soils Program: Remediation completed on 88 properties, although 7 were remediation of part of the yard (typically due to limited access or areas of the yard that are not useable). 77 properties were top priority (P1) and 11 were general community properties. We have completed soil assessment for the year and are waiting for results. We collected samples at 287 properties and visited another 377 properties to assess ground cover. Lawn care was completed on 103 properties and other improvements to 13 properties.
2. Healthy Homes: Wendy Goodrich, formerly F.A.I.R. Building Beautiful Babies Coordinator, has been hired, trained and now assisting Cindy with delivering HH visits.
  - a. HH Visits: Year-to-date 47 visits have been completed; 4 visits are planned in the next two weeks; and 10 families remain to be scheduled.
  - b. Enhanced services and supports are in place for families recommended by Interior Health.
3. Outreach and Engagement:
  - a. October 31<sup>st</sup> and Nov 7<sup>th</sup> – two H&G staff attended Navigator training
  - b. November 18<sup>th</sup>
    - i. FAN hosted a Local Leaders' Luncheon with UBC and FAN Board members
    - ii. Navigator Table Meeting

# 2019 Community Survey Results

## Summary



### Soil Remediation of Residential Yards in Trail

The Trail Area Health & Environment Program (THEP) undertook a survey of community members to understand their perceptions of the 2019 soil remediation program. The survey was online through Survey Monkey and open from September 16 to October 16, 2019. The survey was advertised in the Trail Times, City of Trail Facebook page, THEP website, THEP fall newsletter, at the September 2019 THEC meeting, and at Teck on their internal electronic newsletter. It was also shared with the community by the THEP Home & Garden staff by word of mouth and through mail drops at properties adjacent to remediation work. 108 people responded to the survey.

Respondents were overwhelmingly supportive of the yard remediation program. 96% of respondents said they were either very supportive or supportive of increased soil remediation of yards in Trail. The remaining less than 5% of respondents said they felt either neutral or did not know enough about the program to answer. Nobody was opposed to the program. General reasons for supporting the program included health (especially of children), aesthetics of landscaping, and potential for increased home values as a result of the work.

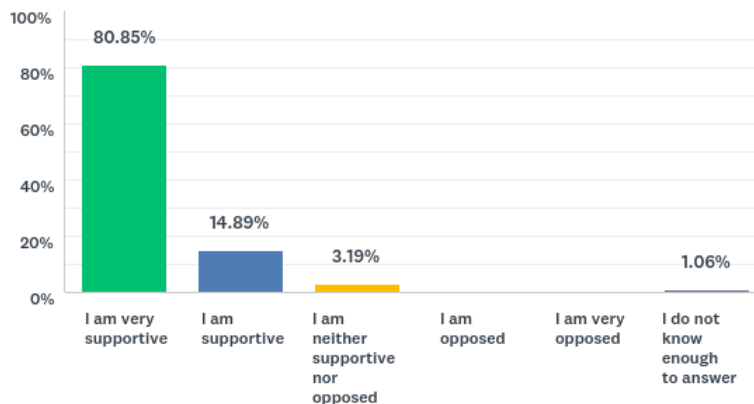


Figure 1: Respondents answers to "How supportive or opposed are you to increased soil remediation of yards in Trail?"

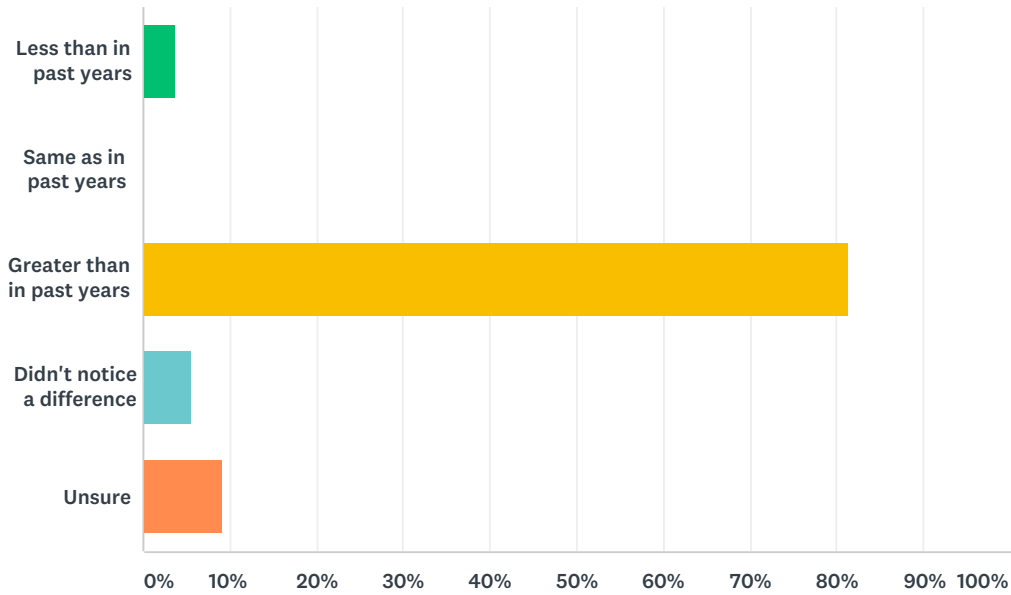
There were very few concerns around noise, dust, or traffic issues related to the program.

Most respondents said that they noticed safe practices of contractors and workers for the remediation program. 95% of respondents said that they never felt unsafe when passing properties undergoing yard remediation work.

While most comments and responses were positive with overwhelming support for increased soil remediation in Trail, a few people expressed frustration around how families with children were being prioritized over families without children. Suggestions for improvement included additional street sweeping and flaggers. A summary of survey results follows with comments removed to protect anonymity of respondents.

# Q1 From my perspective, I noticed that soil remediation work in residential yards in Trail this year was:

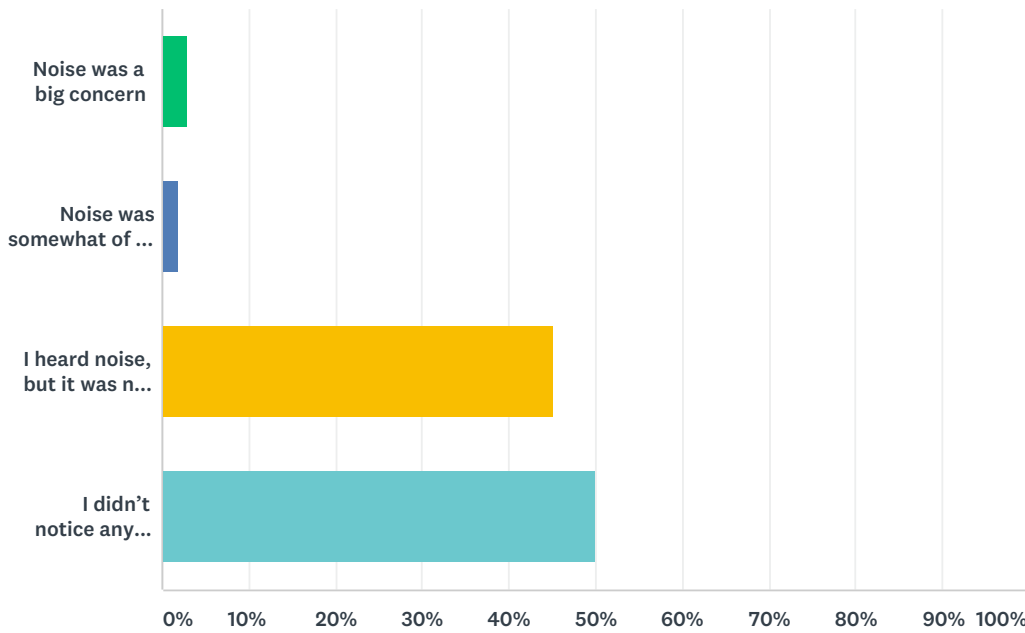
Answered: 108 Skipped: 0



ANSWER CHOICES	RESPONSES	
Less than in past years	3.70%	4
Same as in past years	0.00%	0
Greater than in past years	81.48%	88
Didn't notice a difference	5.56%	6
Unsure	9.26%	10
<b>TOTAL</b>		<b>108</b>

## Q2 Related to noise from yard remediation, please check the answer that best applies.

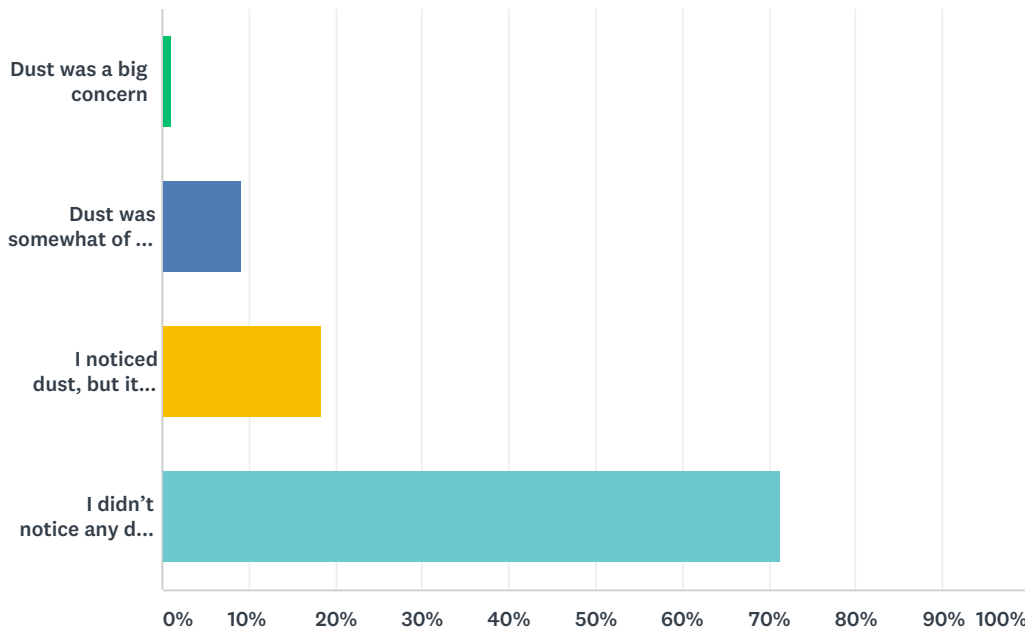
Answered: 104 Skipped: 4



ANSWER CHOICES	RESPONSES	
Noise was a big concern	2.88%	3
Noise was somewhat of a concern	1.92%	2
I heard noise, but it was not a concern	45.19%	47
I didn't notice any noise related to soil remediation in yards	50.00%	52
<b>TOTAL</b>		<b>104</b>

### Q4 Related to dust from yard remediation, please check the answer that best applies.

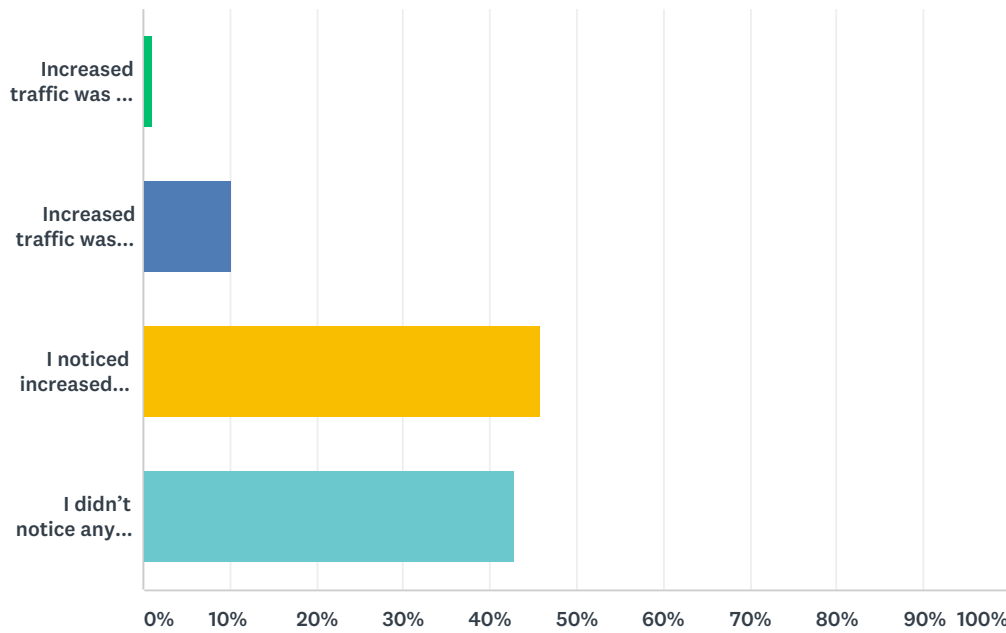
Answered: 98 Skipped: 10



ANSWER CHOICES	RESPONSES
Dust was a big concern	1.02% 1
Dust was somewhat of a concern	9.18% 9
I noticed dust, but it was not a concern	18.37% 18
I didn't notice any dust related to soil remediation in yards	71.43% 70
<b>TOTAL</b>	<b>98</b>

### Q5 Related to traffic from yard remediation, please check the answer that best applies.

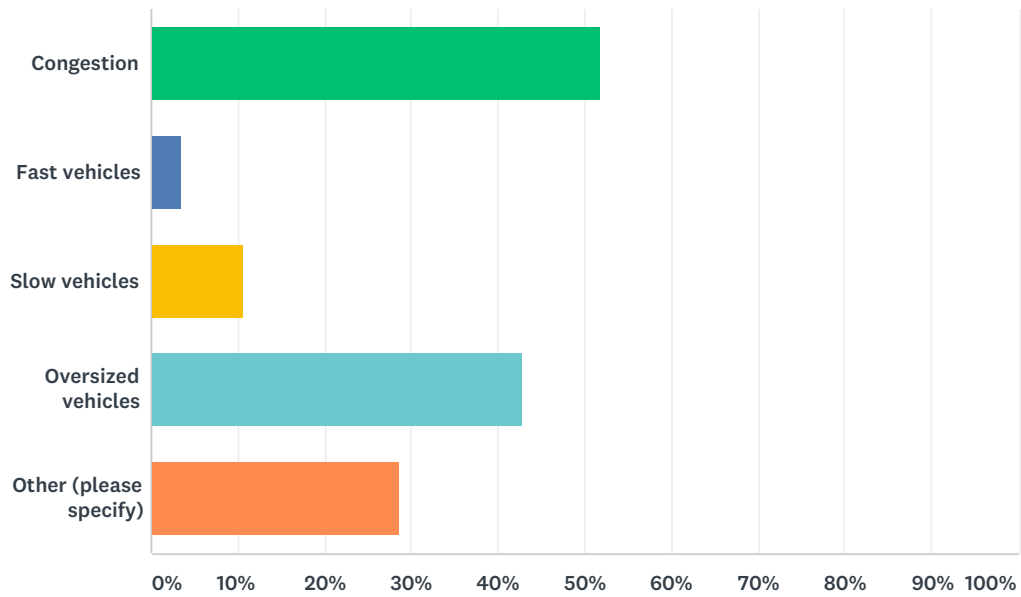
Answered: 98 Skipped: 10



ANSWER CHOICES	RESPONSES	
Increased traffic was a big concern	1.02%	1
Increased traffic was somewhat of a concern	10.20%	10
I noticed increased traffic, but it was not a concern	45.92%	45
I didn't notice any increased traffic related to soil remediation in yards	42.86%	42
<b>TOTAL</b>		<b>98</b>

## Q6 What were some of the biggest issues related to traffic from yard remediation?

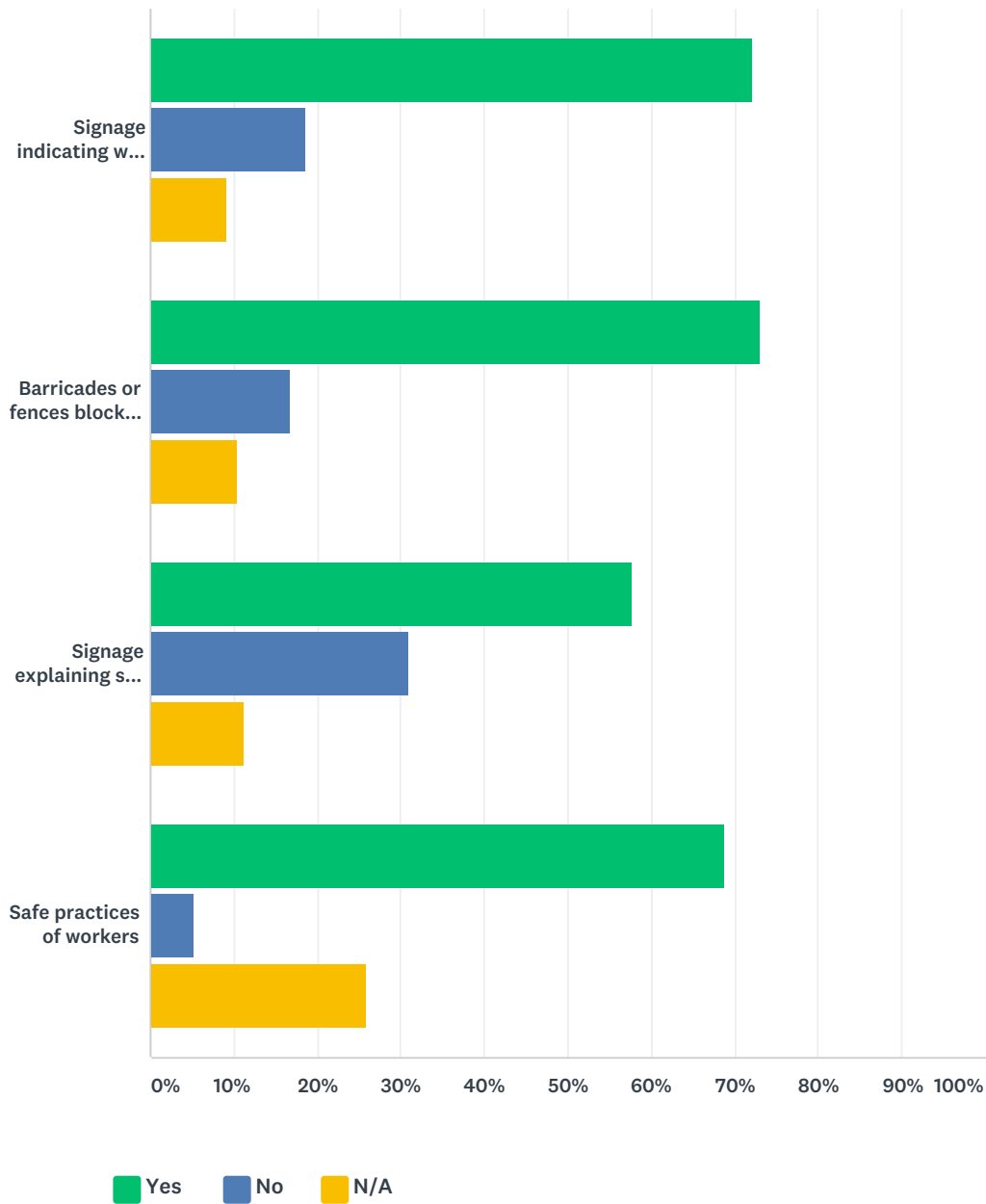
Answered: 56 Skipped: 52



ANSWER CHOICES	RESPONSES
Congestion	51.79% 29
Fast vehicles	3.57% 2
Slow vehicles	10.71% 6
Oversized vehicles	42.86% 24
Other (please specify)	28.57% 16
Total Respondents: 56	

### Q7 When passing properties undergoing yard remediation, please indicate if you have noticed any of the following:

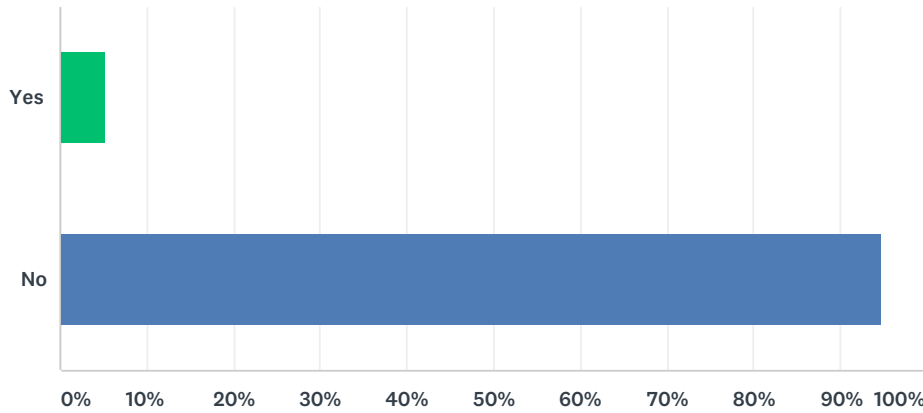
Answered: 97 Skipped: 11



	YES	NO	N/A	TOTAL	WEIGHTED AVERAGE
Signage indicating work site	72.16% 70	18.56% 18	9.28% 9	97	1.20
Barricades or fences blocking off work site	72.92% 70	16.67% 16	10.42% 10	96	1.19
Signage explaining soil remediation	57.73% 56	30.93% 30	11.34% 11	97	1.35
Safe practices of workers	68.75% 66	5.21% 5	26.04% 25	96	1.07

### Q8 Have you ever felt unsafe when passing properties undergoing yard remediation work?

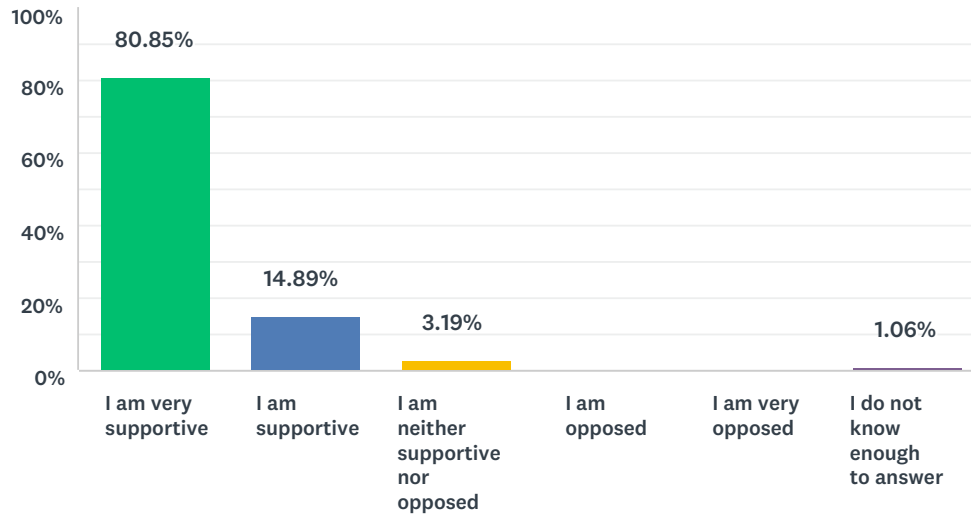
Answered: 97 Skipped: 11



ANSWER CHOICES	RESPONSES	
Yes	5.15%	5
No	94.85%	92
TOTAL		97

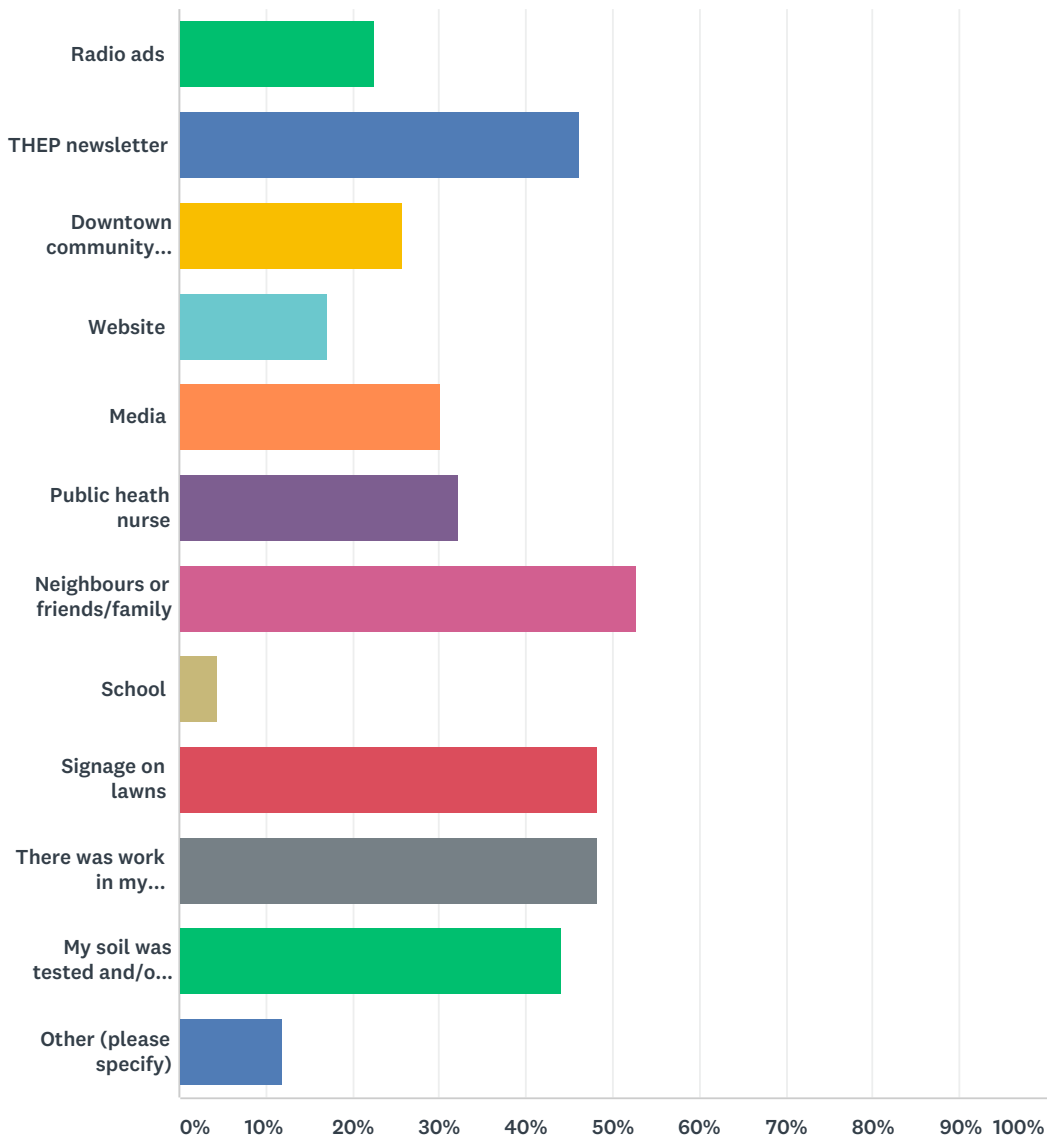
### Q10 How supportive or opposed are you to increased soil remediation of yards in Trail?

Answered: 94 Skipped: 14



## Q12 Where have you seen or heard about the soils program of the Trail Area Health and Environment Program?

Answered: 93 Skipped: 15

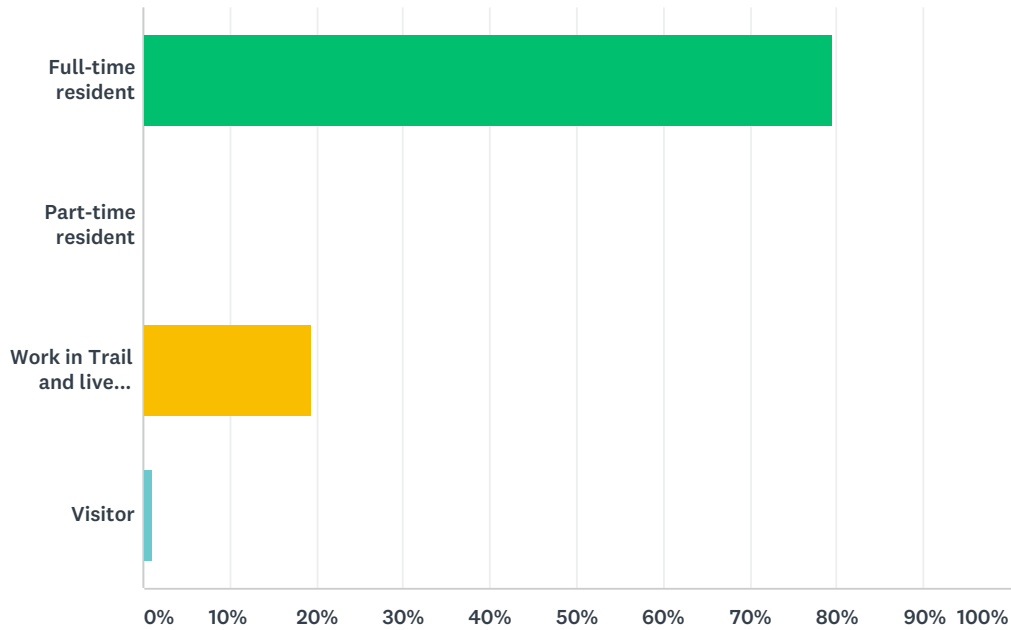


ANSWER CHOICES	RESPONSES	Count
Radio ads	22.58%	21
THEP newsletter	46.24%	43
Downtown community office	25.81%	24
Website	17.20%	16
Media	30.11%	28
Public heath nurse	32.26%	30
Neighbours or friends/family	52.69%	49

School	4.30%	4
Signage on lawns	48.39%	45
There was work in my neighbourhood	48.39%	45
My soil was tested and/or remediated	44.09%	41
Other (please specify)	11.83%	11
Total Respondents: 93		

### Q13 Which option most applies to you?

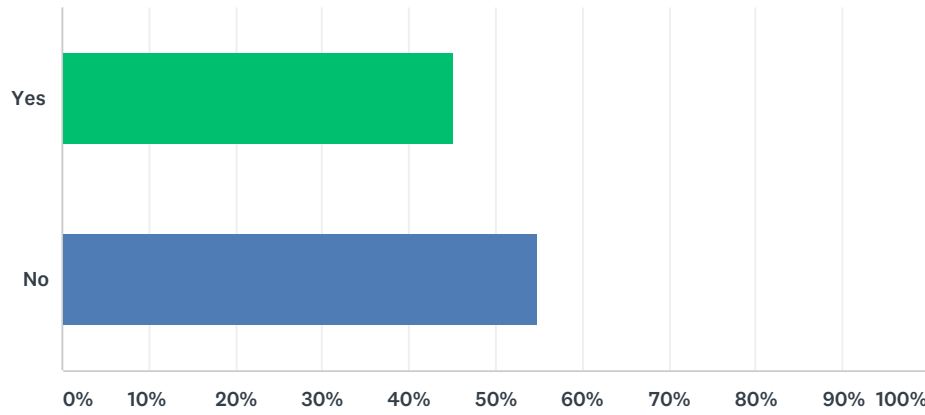
Answered: 93 Skipped: 15



ANSWER CHOICES	RESPONSES	
Full-time resident	79.57%	74
Part-time resident	0.00%	0
Work in Trail and live elsewhere	19.35%	18
Visitor	1.08%	1
TOTAL		93

### Q14 Would you be willing to participate in a follow up interview?

Answered: 93 Skipped: 15



ANSWER CHOICES	RESPONSES	
Yes	45.16%	42
No	54.84%	51
TOTAL		93