

Trail Area Health & Environment Committee



Summary

Virtual Meeting: Thursday, April 30, 2020, 7:00 p.m.

Committee Members in attendance:

Lisa Pasin, Chair, City of Trail
Cyra Yunkws, Village of Warfield
Linda Worley, RDKB Area B
Dan Bouillon, Teck Trail Operations
Clare North, Teck Trail Operations

Lynn Miller, Interior Health
Cassandra Counce, BC Ministry of Environment
Ron Joseph, Community Member
Julia Stockhausen, Community Member
Marylynn Rakuson, Community Member

Others in attendance:

Dr. Nelson Ames, MHO, Retired
Thompson Hickey, Teck Trail Operations
Danielle Grbavac, BC Ministry of Environment
Michelle Laurie, THEC Lead Facilitator

Christina Yamada, Interior Health
Tara Bullanoff, Interior Health
Meghan Morris, Family Health team
Andrea McCormick, Home & Garden team

WELCOME and INTRODUCTIONS

Mayor Lisa Pasin, THEC Chair, opened THEC's first all virtual meeting recognizing the impacts of COVID-19 on the program and THEC members. The meeting closed with introductions for those who haven't been at meetings recently or are new to the THEC. Welcomes were given to RDKB director Linda Worley and ENV representative Danielle Grbavac replacing Peggy Evans.

MEETING MINUTES

Minutes were approved from the THEC meeting, February 20, 2020.

PRESENTATIONS, REPORTS, DISCUSSIONS & RECOMMENDATIONS

Presentations

Area 1 Proposal for Annual Blood Lead Testing

Presenter: Christina Yamada, Interior Health

The proposal for annual voluntary blood lead testing in Area 1 was shared including the rationale and next steps. The MHO recommends the change as more data is needed in order to understand blood lead changes over time. Area 1 local government representatives were communicated with in early April 2020 and are supportive of the change. Acknowledging delays may occur due to COVID-19, next steps include outreach to families in Area 1 inviting them to attend the September blood lead clinics.

THEC members were supportive of the proposal. Proposal details are attached.

Wildlands and THEP (10 min)

Presenter: Clare North, Superintendent Environmental Remediation, Teck Trail Operations

Clare North shared the rationale for removing wildlands from the 'Parks & Wildlands' section of the THEP. Specifically, she mentioned that:

- Wildlands are directly addressed through the Lower Columbia Ecosystem Management Program (LCEMP), a separate program overseen by a multi-agency steering committee. LCEMP is

focused on ecological health and is generally focussed on areas outside of the THEP Program Areas. LCEMP will form part of the Wide Area Remediation Plan (WARP).

- Periodic updates on development and implementation of LCEMP can continue to be provided to the THEC.
- Parks (publicly accessible greenspaces) would be retained within THEP and will continue to be addressed through the THEP's Soil Management Program.

Questions were asked with respect to community participation on LCEMP. It's noted that currently local government and local non-profit agencies represent community interests. In addition, community consultation is part of the WARP process.

THEC members were supportive of the proposal. Proposal details are attached.

Program Reports & Updates

All reports were sent in advance to participants. Presenters provided report highlights followed by questions and / or discussions.

Program planning and adaptations related to COVID-19 (Michelle Laurie, THEC Lead Facilitator)

Michelle reported that health and safety precautions are being taken in all program areas to maintain physical distancing while still servicing the community. She noted that some delays in services are to be expected. In addition, thep.ca will host updated information on the programs. For example, currently available are online forms to arrange for soil testing and virtual home visiting. Lastly, THEP's spring newsletter will be mailed to all homes in the Trail area first week of May.

See attached report for details.

Air Quality

- Report from Teck Trail - **Dan Bouillon, Teck Trail Operations**
 - Dan shared that the numbers for lead in ambient air in the first quarter of the year were lower than in past years which were noted as the lowest levels measured to date.
 - The report on lead and arsenic in air (monthly, quarterly and annual averages) is attached.
- Update on Air Quality Working Group - **Lisa Pasin, Chair**
 - Lisa reported on the BC Lung event held March 4th noting despite low public turnout, the presentations were well received and the working group will engage the external presenters on future SO₂ messaging. She expressed that as the program evolves SO₂ has been an emergent topic discussed at the working group and will be brought to the THEC with educational sessions and requests for feedback on public communication materials.
 - In addition, she reported the working group continues to update the terms of reference to maintain relevance as well as work on public messaging with respect to SO₂ and air quality.
 - The committee accepted the suggestion to include SO₂ as part of THEC discussions moving forward.

Family Health – Meghan Morris, Interior Health

- Megan reported that despite her time the past six-week being focused on COVID-19, she was able to connect with some families when they were at the Kiro clinic. She is looking forward to returning to her THEP role May 4th. She has started preparing for virtual home visits and tentative dates have been set for the fall blood lead clinics.
- The family health report is attached.

Home & Garden Report – Andrea McCormick, SNC Lavalin

- Andrea reported that the team is adapting to work safely in the community during COVID-19. This included developing additional health & safety protocols, ensuring supplies as well as ensuring the support to proceed by Teck, Interior Health and the community. She expressed confidence that programs can be delivered on the ground safely.

- Soil management work and virtual home visits began last week. Outreach continues to be adapted as in person events are cancelled and she invited suggestions from the committee.
- The Home & Garden report is attached.

Soil Management Plan Report - Clare North, Teck Trail Operations

- Clare report that Teck submitted a work plan for the 2020 soil management program to ENV, which included targets for soil assessment (up to 300 yards) and remediation (75 highest priority properties). Following the state of emergency for COVID, the team developed COVID-19 safe work procedures and consulted with IH. The work was deemed low risk for transmission of COVID with the safe work procedures in place. These measures have the potential to reduce the pace of the yard assessment and remediation work, and Teck and its consultants continue to evaluate whether targets are achievable given the COVID pandemic. Teck will provide regular updates to THEC and ENV.

Community Check-In - All community members

- Linda Worley asked if homeowners have ensured consent for yard remediation work. The program team noted that even where previous consent was given, the team is checking with all homeowners to confirm it is still desirable to proceed. To date, one family has requested postponing their remediation as during COVID-19 they want their yard available to spend time in.
- Linda Worley also expressed gratitude for the virtual meeting format which made her participation more feasible.
- Cyra Yunkws used the chat function to share ideas for outreach to the community such as the City of Trail downtown billboard and social media such as Twitter.
- Julia Stockhausen shared that Kootenay Family Place in Castlegar and FAIR in Trail have received money from Columbia Basin Trust to support families in multiple ways. She invited anyone that knows a family in need to have them reach out to these agencies for additional support. In addition, the Family Action Network is a great source of information and a resource for families.
- Marylynn Rakuson mentioned she will contact FAIR to ensure that families attending Building Beautiful Babies continue to receive food support despite not meeting in person.

Executive Report - Lisa Pasin, THEC Chair, Mayor, City of Trail

Mayor Pasin reported that there was an executive meeting in April. The discussions items were the same as those reported to THEC including:

- The MHO proposal to do annual blood lead testing in Area 1
- The proposal to remove wildlands from THEP as per Clare North's presentation.
- The introduction of SO₂ to THEP/THEC via the Air Quality Working Group.

2020 THEC MEETINGS

- June 17 (via zoom)
- Sept 16
- Nov 26

Presentations

Proposal of Expansion of Area 1 THEP Services

In 2018, the blood lead geomean in Area 1 was similar to Area 2 and 3. In late 2019, the Medical Health Officer (MHO) recommended to change the frequency of voluntary testing for Area 1 children in 2020. In parallel, the Exposure Investigation Level (EIL) for children’s blood lead in British Columbia and THEP’s Enhanced Healthy Families Healthy Home Supports (EHFHHS) was lowered thereby likely identifying a larger number of children than previous years.

Blood lead testing took place in 2013 and 2018. Data showed that some children would have had results higher than the current exposure investigation level (EIL). More recently, a couple Area 1 families that participated in the 2019 blood lead clinic were over the lowered EIL and are receiving THEP’s enhanced services. Furthermore, blood leads in Area 1 have not declined at the same rate as declines in Areas 2 and 3.

Given the desire to understand the situation better, there is a need for more data. Based on this, the MHO recommends voluntary annual blood lead testing for Area 1. Area 1 includes all of Warfield and Annabelle, Waneta, Casino and Oasis.

Background Materials

A meeting was held April 2, 2020 with Area 1 local government leaders. Their feedback was as follows:

Both local government leaders expressed support for annual blood lead testing as well as increased soil testing. They also expressed the challenge of communicating on this during a pandemic. Area B representative suggested communications should come from THEC / THEP.

Current THEP Services Available by Area

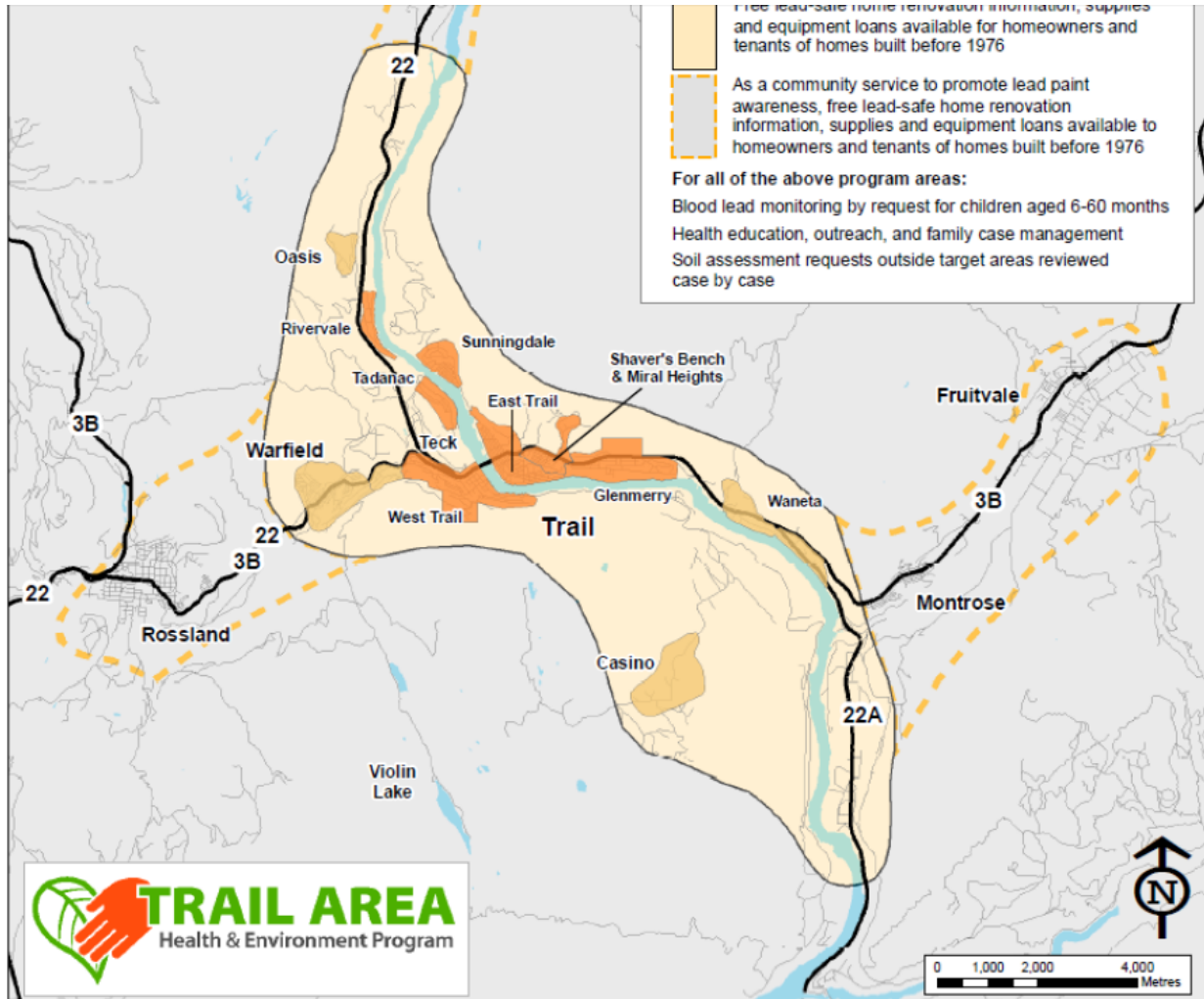
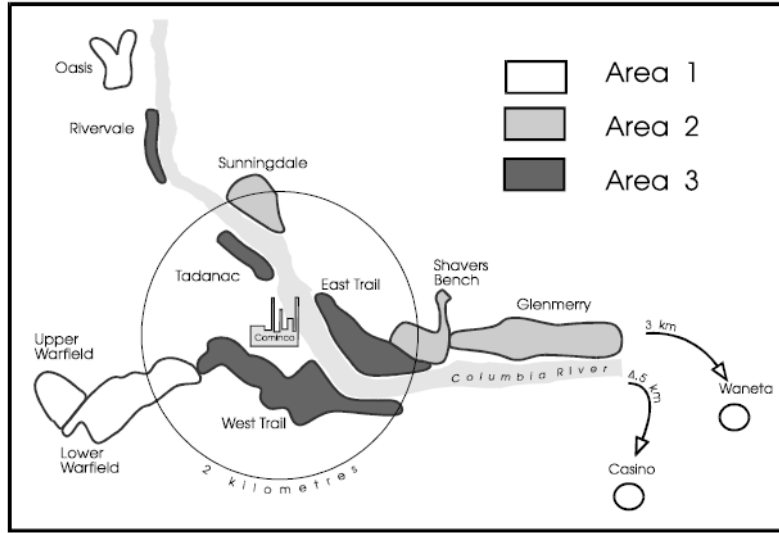
THEP Service	Areas 2 & 3	Area 1	Lower Columbia
Healthy Families Healthy Homes	X		
Annual Blood Lead Testing	X	^	
Enhanced HFHH Support	X	X*	
Soil Management Program	X	X**	
Lead Safe Renovation	X	X	X

^ Every five years blood lead testing is offered to children < 36 months in Area 1. The most recent testing of Area 1 children was in 2018.

* If an Area 1 child attends the clinic and has BL>EIL, they receive EHFHHS.

** Soil management activities in Area 1 are provided upon request and completed in priority order

Area Maps



Proposal to remove “Wildlands” from THEP (THEC Meeting April 30, 2020)

“Wildlands” are currently part of the THEP through the “Parks & Wildlands” program component. It is proposed that “Wildlands” be removed from the THEP and that ecological aspects continue to be addressed through LCEMP for the following reasons:

- Wildlands are directly addressed through the Lower Columbia Ecosystem Management Program (LCEMP), a separate program overseen by a multi-agency steering committee.
- The THEP is focused on human health with the goal “To reduce exposure to lead and other smelter metals in the community on a continual improvement basis” whereas the “Wildlands” aspect of the THEP is focused on ecological health only, does not include activities which work toward the THEP’s goal, and is generally focussed on areas outside of the THEP Program Areas.
- Public consultation on Wildlands will be achieved through consultation on the WARP which will include CSR-related aspects of the THEP along with ecological aspects such as LCEMP.

Parks (publicly accessible greenspaces) would be retained within THEP and will continue to be addressed through the THEP’s Soil Management Program.

Periodic updates on development and implementation of LCEMP can continue to be provided to the THEC.



Background

Wildlands are defined by the *Contaminated Sites Regulation* (CSR): "wildlands land use" means the use of land for a primary purpose other than an agricultural, commercial, industrial, urban park or residential land use.

Wildlands were incorporated into the THEP as it was envisaged that the THEP would form the basis for a Wide Area Remediation Plan (WARP). A WARP must address both risks to human health and risks to ecological health.

Ecological effects were identified through the risk assessment conducted through the 2000s. The conclusion of the ecological risk assessment was that priority actions should be undertaken to restore the plant communities in the area, and that restoring plant communities would enhance the habitat for wildlife. A Steering Committee, not associated with the THEC, was formed in 2010 to oversee the development and implementation of wildland restoration activities through the Lower Columbia Ecosystem Management Program (LCEMP). The LCEMP steering committee includes representatives from BC Ministry of Environment and Climate Change Strategy (ENV), Ministry of Forests, Lands, Natural Resource Operations and Rural Development, local Regional Districts (Kootenay Boundary and Central Kootenay), the Kootenay Conservation Program, the Fish and Wildlife Compensation Program, as well as Teck and its consultants.

The Parks & Wildlands program component, as outlined in the 2014 THEP Program Document, was intended to address both human health and ecological issues through two main approaches: community greening to suppress dust through greening of bare soil within the City of Trail; and, LCEMP which is a collaborative approach to assess, rehabilitate, conserve and enhance land-based wildland ecosystems in the Environmental Management Area.

In 2014, the THEP Program Document was submitted to ENV for consideration as a WARP. Subsequent response from ENV indicated that the THEP Program Document as written was unsuitable as a WARP and that a standalone WARP document, which incorporated only the elements of the THEP which fall within the scope of the CSR should be prepared.

The THEP and its governance via THEC has focussed on activities protective of human health within the defined Program Areas, and consistent with its goal “To reduce exposure to lead and other smelter metals in the community on a continual improvement basis”. Activities focussed on restoration of Wildlands have been developed through LCEMP with oversight from the LCEMP steering committee; the THEC has received period updates on LCEMP but has not been directly involved in its work.

Given that ecosystem management and ecosystem risks are sufficiently governed and worked on by LCEMP, and that a standalone WARP document which incorporates only CSR-related aspects of the THEP along with ecological aspects such as LCEMP is being developed, it is proposed that removing “Wildlands” from THEP would clarify the roles and responsibilities with respect to Wildlands.

The “Parks” component of the THEP is proposed to remain and will continue to address potential human health risks associated with soils in parks and playgrounds across the Environmental Management Area through the THEP’s Soil Management Program.



Reports and Updates

PROGRAM PLANNING

NOTE: Health & Safety protocols have been developed specific to COVID-19. This is on top of the regular H&S protocols already taken to avoid lead exposure in all programs. Programs will have a few delays and may move slower with the new COVID measures put in place.

Soil Management Program



- Overall program will continue with changes and adaptations.
- Relatively, the soils program is considered low risk by the health authority as it is working outdoors, away from people.
- A COVID-19 Program Adaptation Plan will be provided to the Ministry of Environment & Climate Change Strategy to outline how the 2020 Workplan is being adapted.
- Example changes to support physical distancing include online forms, introductory video calls with homeowners, BC CDC signage onsite and reduction of workers on all sites at one time.
- Some proposed changes will be helpful for long term program efficiency however having less contractors to do the actual yard remediation will result in work taking longer than normal.

Healthy Family Healthy Homes



- Public health nurse resources are being allocated to COVID-19 delaying PHN follow up until further notice.
- Healthy homes communications are continuing via email and phone calls. A home assessment checklist is in development as a tool to support online conversations and key messaging.
- Ideas for the future include adapting home visits so people can self-assess and get a follow up with phone / video; for enhanced support, offer video walk-through with clients.
- THEP is liaising with FAN to understand the needs of the wider community network and how THEP could be supportive during this time.
- BL testing and clinics will be at discretion of IH.

Lead Safe Renovation



- LSR will focus on directing to people to available online resources including 'how to' videos on thep.ca
- Advisory support by phone and video is possible upon request.
- Provision of supplies are on hold until further news from Vallen (the supplier)

Community Office & Team



- The community program office is closed until further notice.
- Office staff are set up to work from home.
- COVID-19 health and safety protocols are in place for staff conducting fieldwork.

THEC



- Communications with THEC continues via email (first message March 30). Messaging focuses on adaptations THEP programs are taking to continue including ongoing review and assessment as the situation evolves.
- Meetings (THEC, Executive, Working Groups) are being adapted with video / online formats. Technical support will be offered to participants for maximum participation.
- Priorities and capacity will be assessed ongoing to determine the content and format as we go along.

Communications



- The newsletter due in May will be a tool to share program messaging.
- The website will have a temporary home page to share the latest updates and changes.
- The website / material updates continue in the background; the website hosting is transferring to Canada for secure use of online forms; explanatory videos to support reduced face to face orientation meetings are being discussed; online meeting platforms for external and internal communications continue to be explored and tested.

Air Quality Report & Air Quality Working Group Update

Air Quality Report

April 30, 2020

1. Lead in Air:

First quarter average for lead in air at Butler Park was $0.129 \mu\text{g}/\text{m}^3$, which is lower than the first quarter in previous years. Freezing temperatures and dry, windy weather can make dust control more challenging in the first quarter.

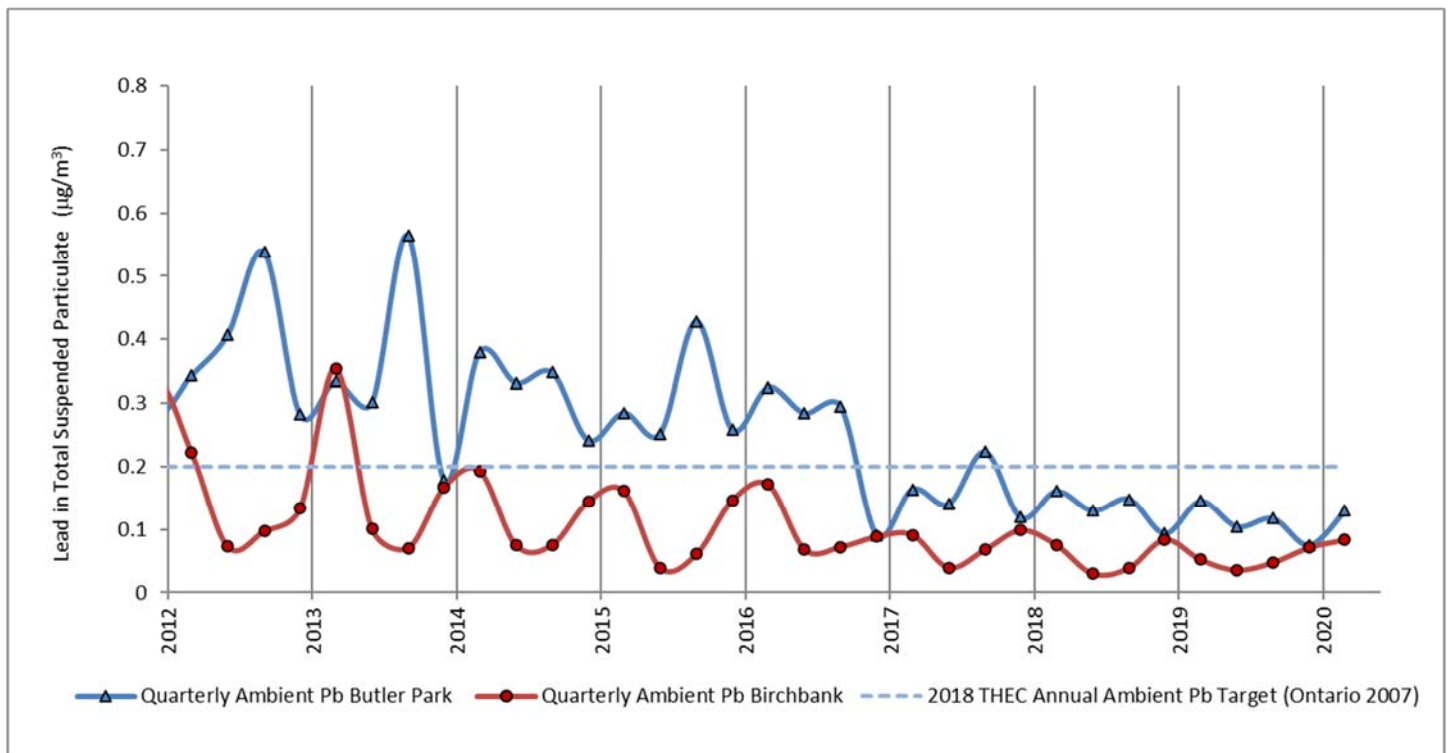


Figure 1: Quarterly monthly average lead at Butler Park and Birchbank stations (as total suspended particulate measured bi-daily)

The chart in Figure 1 shows quarterly averages for Lead in air for Butler Park (dark blue) and Birchbank (red), in comparison to the 2018 THEC Annual Ambient Lead in Air Objective (dashed line).

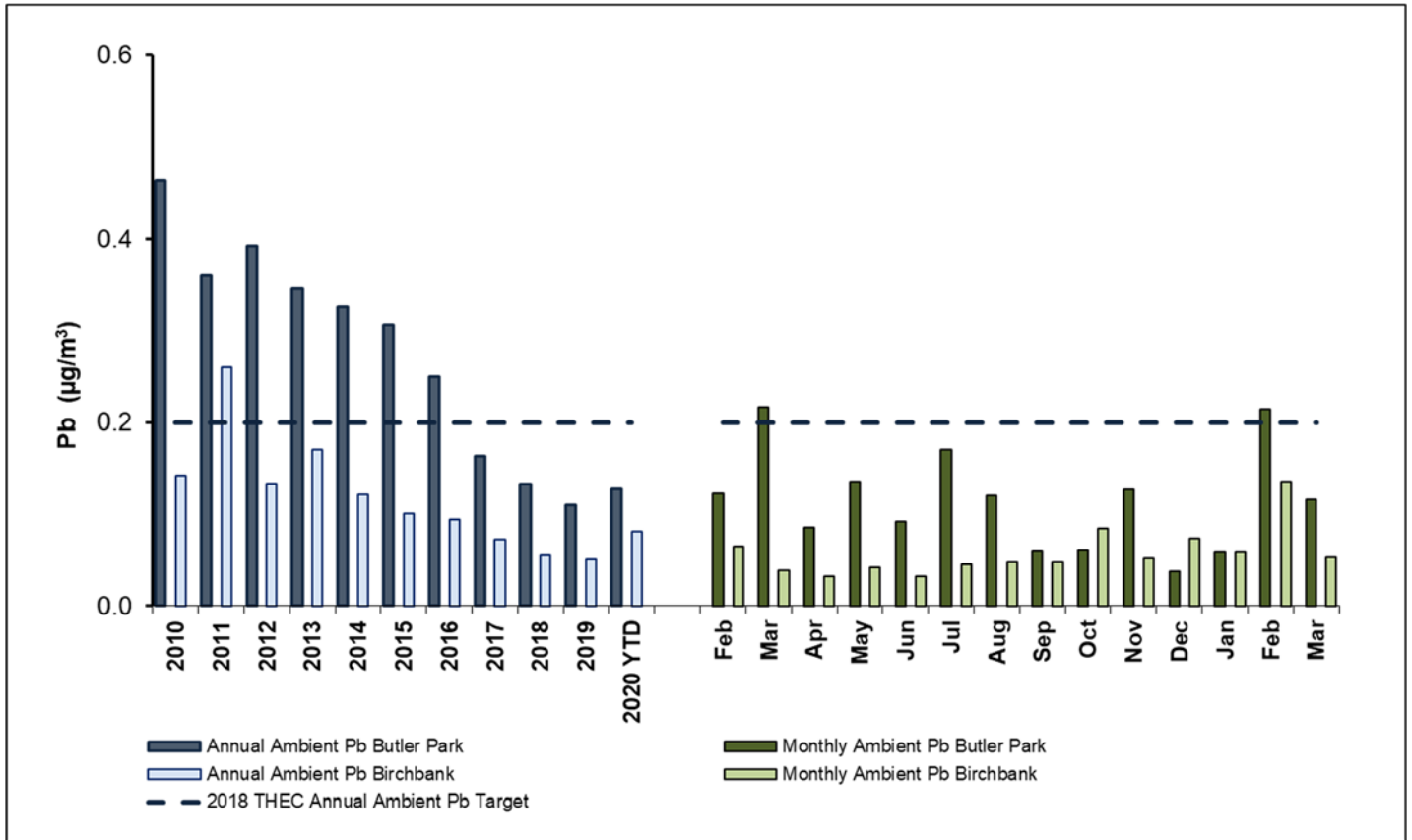


Figure 2: Annual and monthly average lead at Butler Park and Birchbank stations (as total suspended particulate measured bi-daily)

The chart in Figure 2 shows annual and monthly averages for Lead in air for Butler Park. Annual averages are shown on the left for Butler Park (dark blue) and Birchbank (light blue). Monthly averages for the past year are shown on the right for Butler Park (dark green) and Birchbank (light green). The 2018 THEC Annual Ambient Lead in Air Objective is shown as a dashed line. Monthly averages for Lead in ambient air are expected to have some variability due to season, weather, predominant wind direction and operational variance.

2. Arsenic in Air:

First quarter average for arsenic in air at Butler Park was $0.007 \mu\text{g}/\text{m}^3$, similar to the first quarter of 2019.

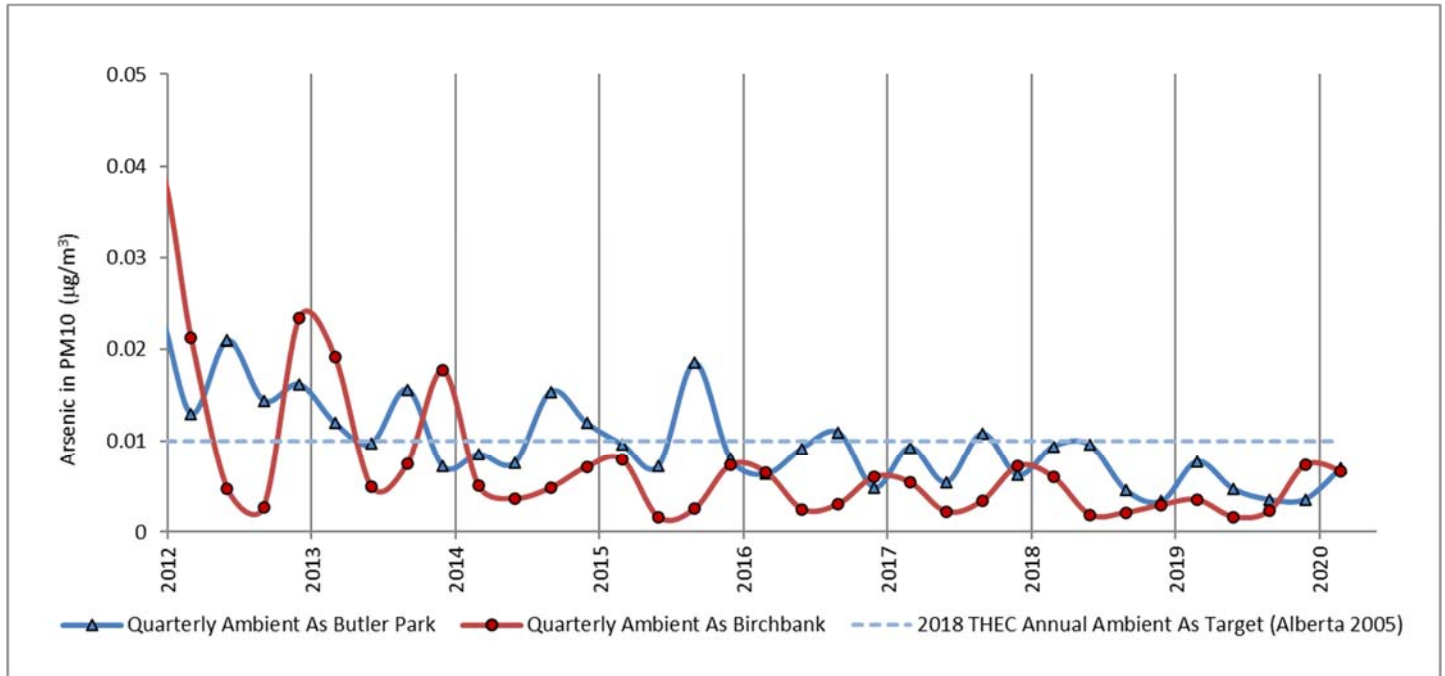


Figure 3: Quarterly average arsenic at Butler Park and Birchbank stations (as inhalable PM₁₀ fraction measured weekly)

The chart in Figure 3 shows the annual average for Arsenic in air (measured as inhalable PM₁₀ fraction) at Butler Park (blue) and Birchbank (red) in comparison to the 2018 THEC Air Quality Objective (blue line).

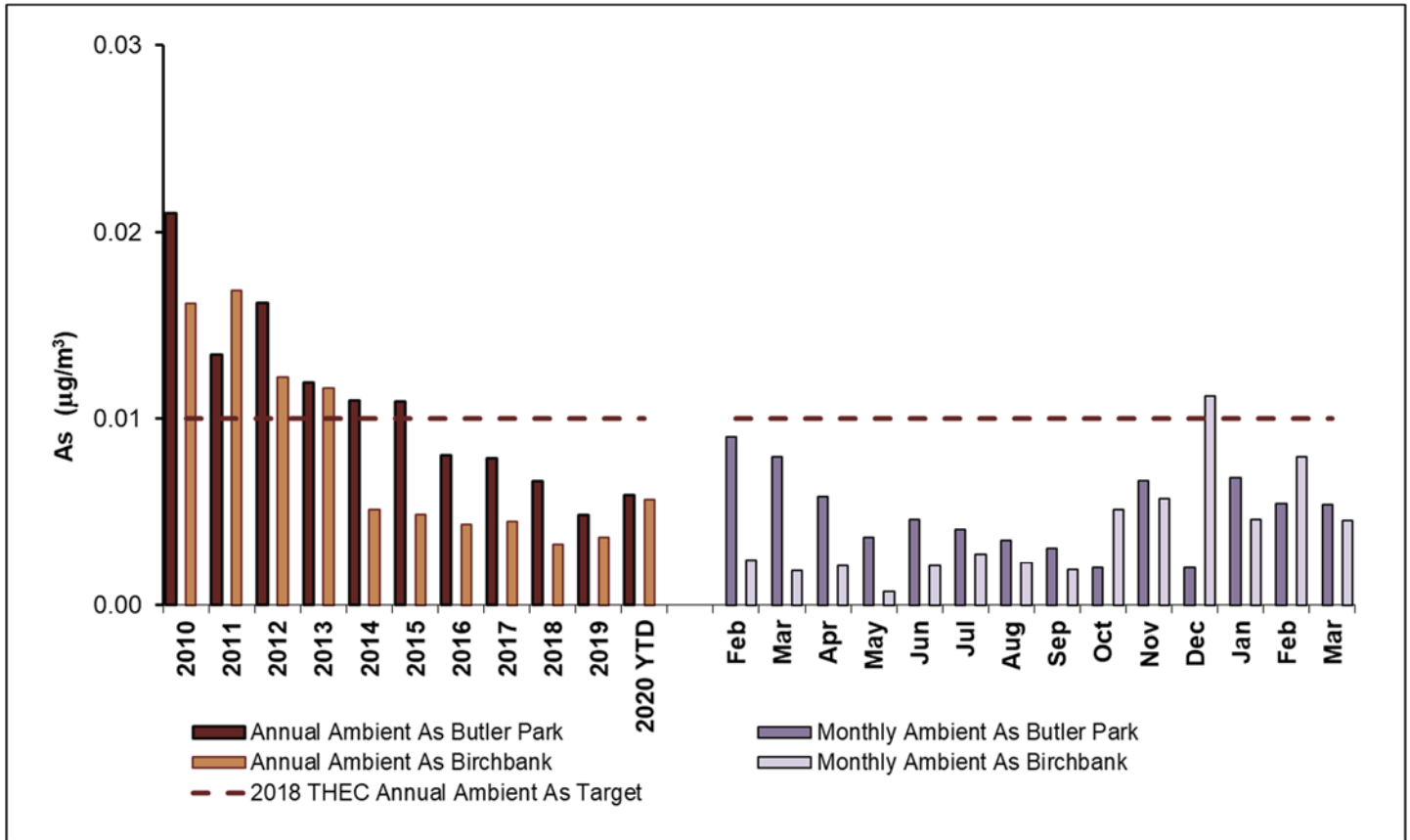


Figure 4: Annual and monthly average arsenic at Butler Park and Birchbank stations (as inhalable PM_{10} fraction measured weekly)

The chart in Figure 4 shows annual and monthly averages for Arsenic in air at Butler Park and Birchbank. Annual averages are shown on the left for Butler Park (dark brown) and Birchbank (light brown). Monthly averages for the past year are shown on the right for Butler Park (dark purple) and Birchbank (light purple). The 2018 THEC Air Quality Objective is shown as a dashed line. Monthly averages for Arsenic in ambient air are expected to have some variability due to season, weather, predominant wind direction, operational variance and sampling frequency.

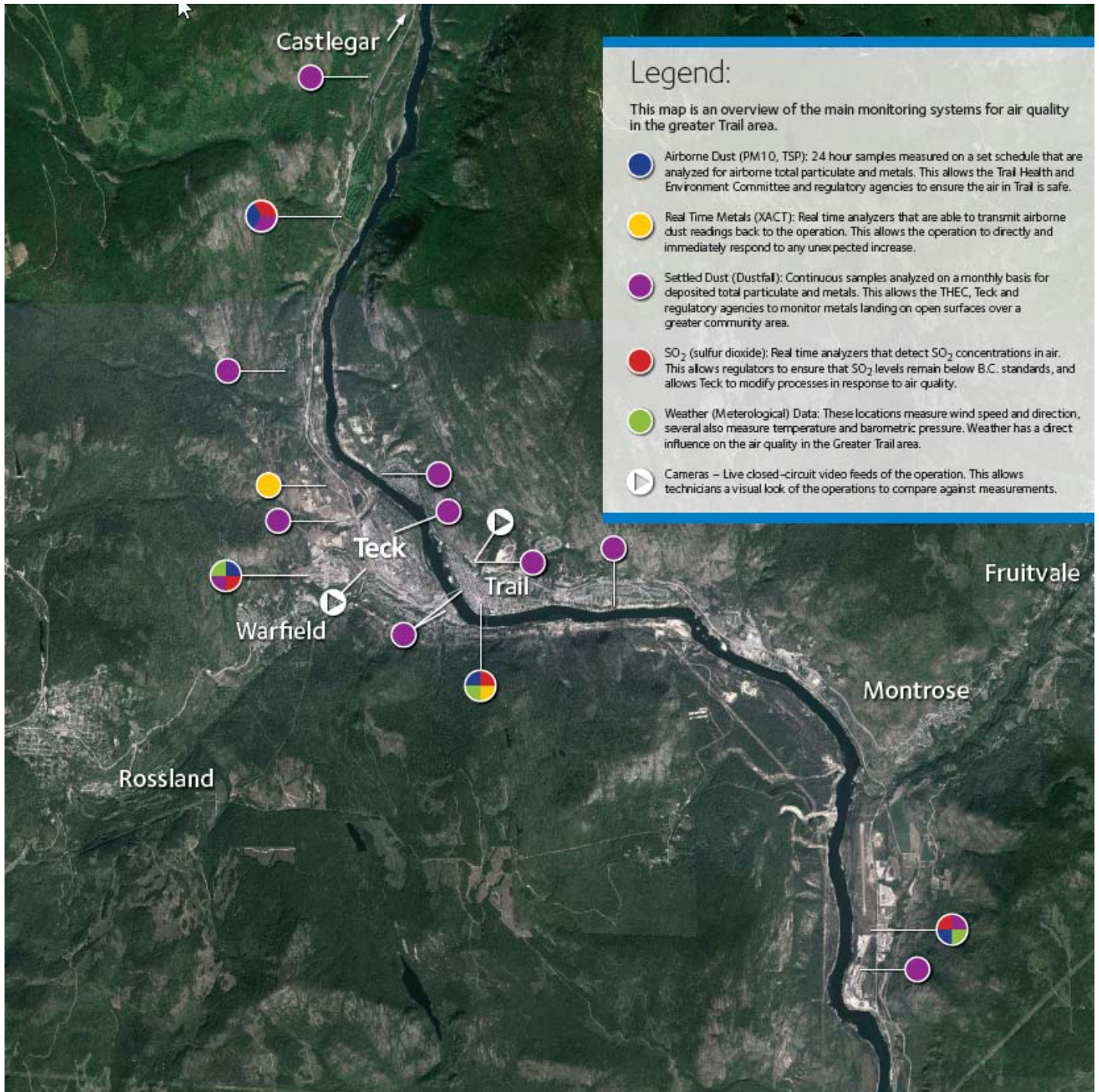


Figure 5: Teck Community Air Monitoring Stations



FAMILY HEALTH

'Healthy Families'
In-home Visits, Children's Lead Testing & Support, Education

AIR QUALITY

Smelter Emission Reductions, Dust Control, Air Monitoring

HOME & GARDEN

'Healthy Homes'
In-home Visits, Home Renovation Support, Garden & Yard Soils



PARKS
Community Greening

PROPERTY DEVELOPMENT

Risk Management Guidelines & Support

WILDLANDS

Ecosystem Management

Family Health



FAMILY HEALTH REPORT

April 30, 2020

RECENT HIGHLIGHTS

1. Healthy Family Visits
2. Community Outreach
3. Fall 2020 Blood Lead Clinic Dates

ADDITIONAL DETAILS

1. Health family Visits

- 13 Visits completed so far in 2020
- 5 visits were postponed with onset of Covid restrictions.
- In home visits currently not being offered, but I have been able to connect with some families when they are at Kiro for appointments
- IH has recently approved the use of Zoom Video for client meetings. I will begin offering Zoom meetings to families in May.

2. Community Outreach

- Attending Building Beautiful Babies Program monthly-last on March 10th. Will resume when group able to meet again.
- First week of March Handwashing demonstrations done with the help of a 4th year Nursing student to all Primary classes at Webster Elementary.
- Attended Trail Early Years Table Meeting on March 11th, virtual meeting being organized for late April to collaborate with community partners to meet family's needs at this time.

3. Tentative Fall 2020 Blood Lead Clinic Dates

- September 14th 9am-4pm
- September 15th 9am-4pm
- September 21st 11am-6pm
- September 23rd 9am-4pm
- September 28th 9am-4pm
- September 29th 11am-6pm

Home & Garden Report, Soil Management Report

April 28, 2020

HIGHLIGHTS

1. COVID-19 pandemic H&G Team response: all H&G programs have adapted safety protocols to work safely within the COVID-19 crisis and align with the direction provided by the health authorities. For example: access to consent forms online via the website, H&G COVID-19 Resident Interaction Acknowledgement (attached).
2. Soils Program: Due to COVID, the start-up was delayed while H&G staff and the contractors worked on adapting the programs to ensuring work could proceed safely. The contractors began soil replacement on top priority properties last week. H&G field staff have also begun soil testing and ground cover evaluations, and lawn care has also started. Note that for anyone interested in soil testing, we will have an online consent form that is available on the website by end of April.
3. Healthy Homes:
 - a. In home visiting has been modified to a phone/videoconferencing check-in depending on the family's preference. As part of the check-in, arrangements are made to drop-off supplies (e.g, dust buster kit, vacuum, etc.) at the home in accordance with the new COVID safety measures, ensuring physical distancing and good hygiene practices. The HH team did their first "virtual" home visit last week.
 - b. Enhanced services such as house cleaning has been temporarily halted and the HH Team is looking for other ways to support these families in the interim and will get back to work with them as soon as possible.
4. Outreach and Engagement:

- a. In the short term, we are looking for non-‘event oriented’ outreach such as newspaper articles or social media. If you have any ideas, we would love to know how you are getting information these days!
- b. We continue to be connected with the Navigator Table, Family Action Network, and Early Years Coalition to ensure we are aware of supports in the community. We are supporting families during this crisis and ensuring they have access to services is important. FAN has updated their website with the latest info and most families are being encouraged to explore this website.
- c. Daycares – the HH Team in consultation with the Program Team will be working to develop outreach opportunities for daycares in the coming months.

Community Check-in & Executive Report