

Trail Area Health & Environment Committee



SUMMARY

Meeting: April 26, 2022, 7:00 p.m. by zoom

Committee Members in attendance:

Lisa Pasin, Chair, City of Trail
Dr. Karin Goodison, Interior Health MHO
Cassandra Counce, BC Ministry of Environment
Steve Hilts, Community Member
Julia Stockhausen, Community Member

Cyra Yunkws, Village of Warfield
Tara Bullanoff, Interior Health (alternate)
Dan Bouillon, Teck Trail Operations
Clare North, Teck Trail Operations

Others in attendance:

Christina Yamada, Interior Health
Colleen Delaney, BC Ministry of Environment
Jayne Garry, Teck Trail Operations
Cindy Hall, SNC Lavalin
Frances Boreland, Broken Hill, Australia

Cecilee Pitman, Interior Health
Thompson Hickey, Teck Trail Operations
Erynn Scaia, SNC Lavalin
Alexa Matthes, SNC Lavalin
Michelle Laurie, THEC Lead Facilitator

The Trail Area Health & Environment Committee (THEC) meets five times per year online or in-person. Members, designates and community members are welcome.

MEETING MINUTES

- The minutes from the THEC meeting, Feb 10th, 2022 were approved.

PRESENTATIONS, REPORTS, DISCUSSIONS & RECOMMENDATIONS

Presentations

THEC Looking Forward and updated Draft Terms of Reference

Presenter: Lisa Pasin, THEC Chair

- Lisa introduced the need to update THEC/THEP documents and shared graphic recordings from THEC executive meetings focused on “looking forward” that took place November 2021, February and March 2022 (see attached notes).
 - Actions that came out of these meetings included updating the THEC Terms of Reference (ToR) and developing a THEP Strategic Directions document.
- The attached current and proposed ToRs were discussed by everyone in attendance.
 - The feedback was generally positive. Several suggestions were made to improve language for relevance, clarity and understanding.
 - Michelle is tasked to consider the suggestions and work through proposed changes via email. A draft final ToR will be brought forward at the June 21st THEC meeting for approval.
- Lisa also introduced the need to articulate the program (THEP) as well as agree on future goals and aspirations to work towards. Some work has started on a Strategic Directions document and wider THEC input is sought.
 - The purpose of the document is to be a guide the partners can use to work together as well as be a public facing document that provides context for THEP and what it’s trying to achieve.
- Lisa asked for volunteers to join a working group to support Michelle, the THEC Lead Facilitator, in developing the document further. Several people volunteered to help and will be contacted for a separate meeting in May.
 - A draft for discussion will be brought forward at the June THEC meeting. The timeline for completion is September 2022.

Program Reports & Updates

Air Quality

- Air Quality Report (see attached) – **Dan Bouillon, Teck Trail Operations**
- Air Quality Working Group Update – **Lisa Pasin, Chair**
 - Lisa shared there will be an air quality update specific to SO₂ in the THEP spring newsletter. The newsletter is mailed out the first week of May and is also available on thep.ca.
 - The working group continues planning on SO₂ communications related to daycares, seniors and physicians.
 - Donna Haga from the Ministry of Environment is following up on the THEC request to include Canadian data in the Pb comparison presented to the THEC in February.

Family Health Report – (see attached) **Cecilee Pitman, Interior Health**

Home & Garden Report – (see attached) **Cindy Hall, SNC Lavalin**

Community and Committee Check-In – Open dialogue

- Steve Hilts presented a Community Renewal Plan update (see attached presentation, briefing note and the draft community renewal plan).
 - The response was positive and several suggestions were made on how community may be made to feel more comfortable participating such as reviewing options for meeting locations, times, as well as hosting in person, virtual or using hybrid formats.
 - The plan was accepted with the acknowledgement of an edit in section 3.3 with respect to First Nations engagement. Furthermore, the plan will be updated on an ongoing basis to remain relevant.

Program Planning Update - Michelle Laurie, THEC Lead Facilitator

- Michelle provided an update on the THEP communications plan (briefing note attached).
- Program planning is currently focused on supporting the program team in their spring communications as well as the THEC in updating their strategic directions.

Executive Report - Lisa Pasin, THEC Chair, Mayor, City of Trail

- No meeting was held.
- In line with the updated documents and Terms of Reference for THEC, Lisa proposed changing the name of this section in the future from Executive Report to Partner Meeting Report.

2022 THEC MEETING DATES

- June 21
- September 22
- December 1

THEC meetings are held from 7:00-9:00pm.

Trail Area Health & Environment Committee



AGENDA

Meeting: April 26, 2022, 7:00 p.m.

By Zoom: <https://us02web.zoom.us/j/86525980829>

Committee Members:

Lisa Pasin, Chair, City of Trail
Sandy Santori, Alternate Chair, City of Trail
Dr. Karin Goodison, Interior Health MHO
Jane Power, Interior Health
Kyle Jorgenson, USW Local 480 Rep
Dan Bouillon, Teck Trail Operations
Clare North, Teck Trail Operations

Linda Worley, RDKB Area B
Cyra Yunkws, Village of Warfield
Ali Grieve, RDKB Area A
Cassandra Counce, BC Ministry of Environment
Ron Joseph, Community Member
Steve Hilts, Community Member
Julia Stockhausen, Community Member

The Trail Area Health & Environment Committee (THEC) meets five times per year online or in-person. Members, designates and community members are welcome.

WELCOME and INTRODUCTIONS (5 min)

- Opening remarks from Mayor Lisa Pasin, THEC Chair

MEETING MINUTES

- Approve minutes from THEC meeting, Feb 10th, 2022 (as attached)

PRESENTATIONS, REPORTS, DISCUSSIONS & RECOMMENDATIONS

Presentations

THEC Looking Forward and Updated Terms of Reference (30 mins)

Presenter: Mayor Lisa Pasin, THEC Chair

- Information followed by discussion
- See notes and draft Terms of Reference in agenda package

Program Reports & Updates (45 mins)

PLEASE NOTE:

All reports are provided in the agenda package for your review prior to the meeting. They are not presented. PLEASE BRING YOUR QUESTIONS OR ITEMS FOR FURTHER DISCUSSION.

Air Quality

- Air Quality Report (see attached) – **Dan Bouillon, Teck Trail Operations**
- Air Quality Working Group Update – **Lisa Pasin, Chair**

Family Health Report – (see attached) **Cecilee Pitman/Meghan Morris, Interior Health**

Home & Garden Report – (see attached) **Cindy Hall, SNC Lavalin**

Community and Committee Check-In – Open dialogue (15 mins)

- Community renewal update (briefing note and plan attached)
- Round table contributions & questions

Program Planning Update - Michelle Laurie, THEC Lead Facilitator

- Communications plan update (briefing note attached)

Executive Report - Lisa Pasin, THEC Chair, Mayor, City of Trail

2022 THEC MEETING DATES

- June 21
- September 22
- December 1

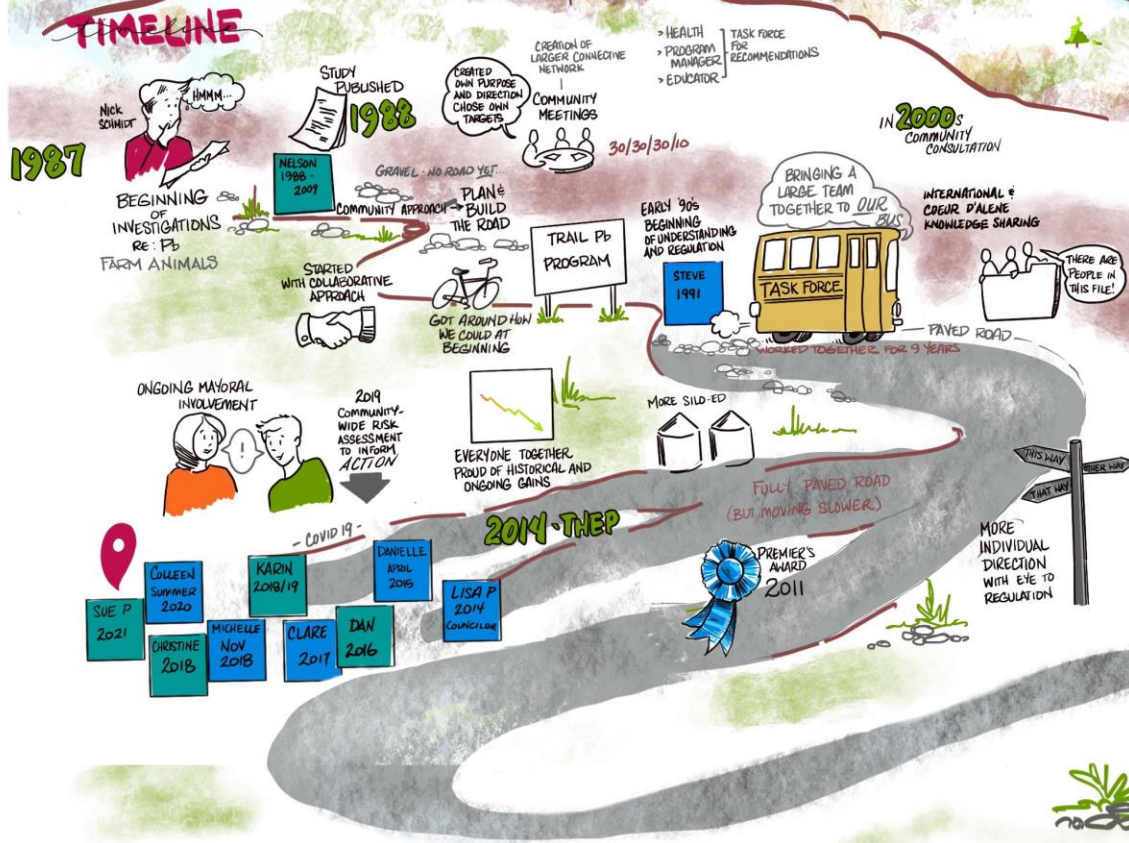
THEC meetings are held from 7:00-9:00pm.

Presentation

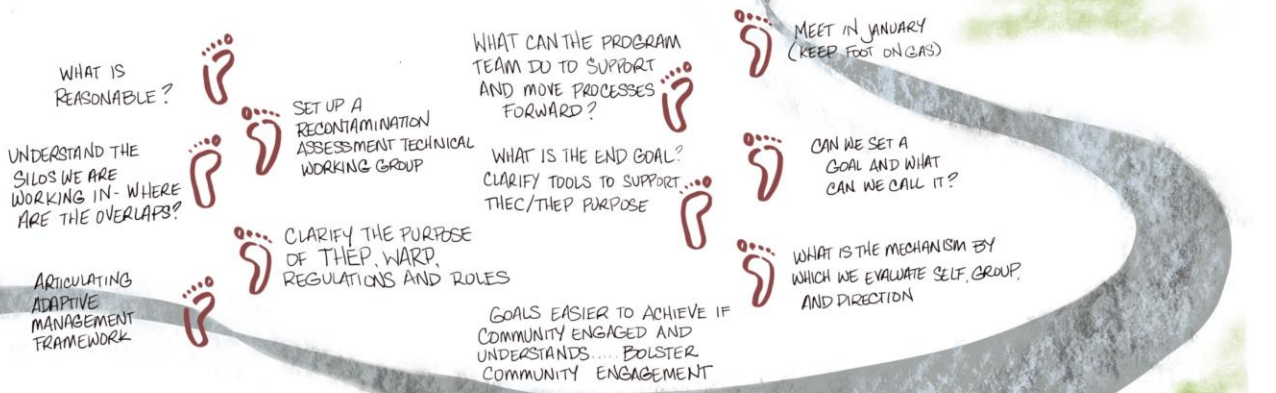
THEC Looking Forward and Updated Terms of Reference

LOOKING BACK, LOOKING FORWARD

NOVEMBER 30, 2021



WE NEED A PLAN IN PLACE



THE CONVERSATION CONTINUES...

ACTIONS

- ▶ UPDATE THEC TERMS OF REFERENCE
- ▶ DRAFT A BRIEF STRATEGIC DIRECTIONS DOCUMENT TO REVIEW

NEED MORE CLARITY

WHAT ARE THEY ALL ABOUT?
THEP?
THEC?

WHAT IS REGULATED/
NON-REGULATED?

ADDRESSING QUESTIONS OF:

WHAT IS THE THEP?

THEC MEETING
APRIL 26

THE CONVERSATION GOING...

THEP AS LEADER

RENEW THEP

SUPPORT GOALS OF A W.A.R.P.
(WIDE AREA REMEDIATION PLAN)

MONITORING AND LEARNING

FORUM FOR DIALOGUE,
COMMUNITY ENGAGEMENT,
SHARING WITH THE PUBLIC

PROTECTING COMMUNITY HEALTH

THEP AS A ONE STOP SHOP FOR COMMUNITY NAVIGATION



RELATIVE AND VARYING PRIORITIES

NOT STARTING FROM SCRATCH

CONTEXT

SHORT TERM GOALS
LONG TERM PROJECT

LENS OF COMMUNITY

MORE IMPACT WORKING TOGETHER THAN AS INDIVIDUAL ORGANIZATIONS

WHY DO WE EXIST?

PURPOSE

WE ARE HERE TO SERVE COMMUNITY

SO THEY CAN LIVE AND PLAY!
IN TRAIL... LONG TERM!

MEETING FEBRUARY 3

COLLABORATION
COMMUNITY CONSULTATION
SHARING OUR LEARNING

WORKING TOGETHER

IN AREAS THAT ARE REGULATED AND SOMETIMES BEYOND REGULATION

as important to the community and still achieving our purpose

REDUCING ENVIRONMENTAL HEALTH IMPACTS

WHAT ARE WE DOING?

UNDERSTAND AND MAKE SENSE OF REGULATORY REQUIREMENTS

INFORM ADAPTIVE MANAGEMENT FOR CONTINUOUS IMPROVEMENT

MEETING FREQUENCY

EXTREME CLIMATE EVENTS

TIME - PARTICIPANTS ARE STRETCHED



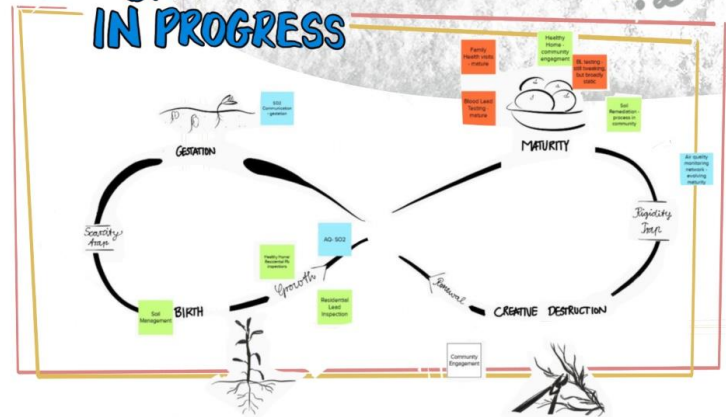
MEET AS A GROUP MARCH 2022

DEVELOP A TIMELINE AND MILESTONES

SUMMARIZE WHERE WE ARE AT - ASK QUESTIONS TO HELP INFORM THE WAY FORWARD AND USE TIME MOST EFFECTIVELY

MEETING MARCH 3

BASELINE IN PROGRESS



BROAD OBJECTIVES

INTEREST IN CONTINUING WORKING TOGETHER... COMMITMENT TO KEEPING THE CONVERSATION GOING...

REGULATION PROGRAM
COMMUNITY AT THE CENTRE

City of Trail
Select Committee of Council
Terms of Reference

NAME OF COMMITTEE:

Trail Health and Environment

MANDATE:

To reduce exposure to lead and other smelter metals in the community on a continual improvement basis.

FUNCTIONS:

Within their mandate, the Committee is to:

- Monitor, coordinate and advise Council on the implementation of the Trail Area Health & Environment Program ;
- Facilitate public communication and oversight with respect to delivery of services and progress towards the Committee's mandate;
- Provide for public financial accountability, especially in terms of public input on priority setting;
- Participate directly in the development of the final remedial plan for the area.

MEMBERSHIP:

Membership on the Committee shall consist of the following:

- The Mayor, or designate from City Council, who shall act as Chair;
- 1 member of City Council;
- 1 member appointed by the following organizations, or their designate:
 - Village of Warfield
 - RDKB Electoral Area 'A'
 - RDKB Electoral Area 'B'
 - Teck Metals Ltd.
 - Ministry of Environment
 - United Steelworkers, Local 480
- 2 members from the Interior Health Authority
- 4-6 members appointed from the public at large who are broadly reflective of the community.

Membership on the Committee shall reflect the desired experience, knowledge and expertise necessary to fulfill the Committee's mandate.

Members shall serve on the Committee without remuneration.

Once the remedial plan has been approved, the role of the Committee will be re-evaluated.

MEETINGS:

Meetings of the Committee shall be held at least quarterly and shall be open to all members of the public and media. A meeting of the Committee may also be called at the discretion of the Chair.

A quorum is 6 members.

On all matters requiring a decision, the Committee shall attempt to reach said decision by a process of consensus. If the Committee is unable to achieve a consensus, the decision shall be decided by majority vote.

Agenda packages will be sent to the members before the meeting and will exclude confidential information.

If any member considers an agenda item confidential, they will advise the Chair and that item may be discussed in camera at the discretion of the Chair.

BUDGET & EXPENDITURES:

Teck Metals Ltd. will provide funding, facilities and/or equipment if needed by the Committee to conduct meetings (eg: presentation equipment, photocopying, minute taking).

REPORTING:

The minutes of each meeting of the Committee must be legibly recorded and highlight key discussion points and record any decisions or recommendations the Committee may decide on.

The minutes shall be submitted to the Corporate Administrator's office for circulation to Council as soon as possible after the meeting. As the minutes will be available to the public, they will include reporting on items of general discussion and exclude any and all confidential material.

The Mayor shall report on the activities of the Committee at the next Regular Council Meeting after any Committee meeting.

The following parties shall submit a report to the Committee as noted:

- City of Trail staff will report to the Committee on street washing and dust suppression on alleys. City staff will also report to the Committee on community greening initiatives undertaken by the City.
- Teck Metals Ltd. representative will report to the Committee on the results of environmental monitoring and remedial activities including emissions reduction and monitoring, dust control, the Home Renovation Support Program, soil testing and remediation, primary prevention and case management services, property development remediation programs, greening, and environmental management planning.. The Teck representative may delegate reporting on the Home & Garden Program to their designated contractor, SNC Lavalin Environment.

- The Interior Health Authority staff responsible for the blood lead testing, primary prevention home assessments and education, family case management and education programs will report to the Committee on those programs. A Medical Health Officer will provide advice, including written guidance, to the Committee on an as needed/requested basis.
- The Trail Area & Environment Program Manager will report to the Committee on activities carried out in their role managing the implementation of services/actions in accordance with approved annual workplans.

FOR REVIEW BY THEC (APRIL 2022)
City of Trail

Select Committee of Council
Terms of Reference

NAME OF COMMITTEE:

Trail Area Health & Environment Committee (THEC)

MANDATE:

To be a transparent platform for multistakeholder governance, dialogue and community engagement specific to implementation of the Trail Area Health & Environment Program (THEP)*.

ROLE:

- Recommend strategic direction to the THEP.
- Monitor and advise Trail City Council on the implementation of the THEP;
- Support collaboration between program partners in an effort for the whole to be greater than the sum of the parts.
- Support sensemaking of the complexities revealed within the program activities and initiatives for the context of Trail.
- Establish and convene Working Groups from time to time to investigate and make recommendations on specific issues (for example Air Quality Working Group, Community Renewal Working Group).
- Facilitate public communication and oversight with respect to delivery of services and progress toward the joint goals and objectives of the THEP; and
- Provide voice for the community of Trail in related processes, taking place concurrently at times, and relevant to attaining the stated goals and objectives.

The Committee is not a regulatory body and does not replace the regulatory functions required between some of its members.

Some members of the Committee partner in program implementation in order to realize increased health benefits to the community.

MEMBERSHIP:

Membership on the Committee aims to include those with a potential interest in the activities of the THEP, and shall consist of:

- The City of Trail Mayor, or designate from City Council, who shall act as Chair;
- 1 member of Trail City Council, who shall act as alternate Chair;
- 1 member appointed by the following local governments, or their designate:
 - Village of Warfield
 - RDKB Electoral Area 'A'
 - RDKB Electoral Area 'B'

- 2 members from Teck Trail Operations
- 2 members from Ministry of Environment and Climate Change Strategy
 - Member specific to authorizations South
 - Member specific to land remediation section
- 2 members from the Interior Health Authority
 - Medical Health Officer
 - Organizational representative
- 1 member from United Steelworkers, Local 480 or 9705
- Up to 6 members appointed from the public at large, or representative organizations, who are broadly reflective of the community.

Membership on the Committee shall reflect the desired experience, knowledge and expertise relevant to fulfilling the Committee's role. Organizations will appoint their representatives. Recruitment for representatives from the community and representative organizations will be tasked to the THEC Lead Facilitator and approved by the Chair in consultation with the Committee.

Members shall serve on the Committee without remuneration.

MEETINGS:

Meetings of the Committee shall be held at least quarterly and shall be open to all members of the public and media. A meeting of the Committee may also be called at the discretion of the Chair.

A quorum is the majority of the number of appointed Committee members. A meeting shall require a quorum in order to proceed.

On all matters requiring a decision, the Committee shall attempt to reach said decision by a process of consensus. If the Committee is unable to achieve a consensus, the decision shall be decided by majority vote.

Agenda packages will be sent to the members before the meeting and will exclude confidential information.

If any member considers an agenda item confidential, they will advise the Chair and that item may be discussed in camera at the discretion of the Chair.

BUDGET & EXPENDITURES:

Teck Metals Ltd. will provide funding, facilities and/or equipment if needed by the Committee to conduct meetings (eg: presentation equipment, photocopying, minute taking).

REPORTING:

The minutes of each meeting of the Committee must be recorded, highlight key decision points and record any decisions or recommendations the Committee may decide on.

Once approved by the Committee, the minutes shall be provided to the Corporate Administrator's office for circulation to Council. The minutes (excluding any confidential material) will also be posted online for the public, at thep.ca.

The Mayor shall report on the activities of the Committee at the next Regular Council Meeting after any Committee meeting.

The following parties shall submit a report to the Committee as noted:

- Teck Trail Operations representatives will report to the Committee on the results of aerial environmental monitoring, environmental management planning, soil management activities, home visiting and support activities, outreach and other related program activities. The Teck representatives may delegate reporting on areas outside of air emissions to their designated contractor.
- Interior Health staff are responsible for primary prevention, blood lead testing, enhanced supports and community liaising will report to the Committee on those programs. A Medical Health Officer will provide advice, including written guidance, to the Committee on an as needed / requested basis.
- The THEC Lead Facilitator will report to the Committee on activities carried out in their role supporting program activities / teams as well as committee members, working groups and their activities.

REVIEW:

The Terms of Reference of the Committee will be reviewed in conjunction with the program monitoring and reviews (at least every five years).

***ABOUT THEP:**

THEP works to support community health and wellbeing in the area influenced by smelter air emissions. The overall Program enables the community to understand and navigate ways to reduce exposure, addresses the inherent overlap of the Program components and maximizes opportunities for improvement through an integrated approach. The various Program components are implemented by different entities (known as partners).

Air Quality Report



Air Quality Report

April 26, 2022

1. Lead in Air:

Averages for lead in air continue to be at historical lows; first quarter 2022 average for lead in air at Butler Park and Birchbank stations were 0.045 $\mu\text{g}/\text{m}^3$ and 0.065 $\mu\text{g}/\text{m}^3$, respectively. As seen in Figure 1, it is unusual for Birchbank to report higher levels than Butler Park, and this occurs when winds are dominantly from the south and southeast rather than the north and northwest, as was the case in Q1 2022.

As seen in the monthly averages in Figure 2, month to month variability in ambient levels remains relatively low, but the influence of abnormal weather, including temperature extremes, very low precipitation, and high frequency of winds gusts, can be seen in the data.

Figure 3 presents the 3-month rolling average for lead in air measured at the Butler Park station compared to the US EPA standard of 0.15 $\mu\text{g}/\text{m}^3$ (Federal and BC Provincial governments do not have ambient air quality objectives or standards for lead; however, it is reasonable to rely on standards from other jurisdictions when this is the case). Lead in air levels measured at Butler Park and Birchbank meet the US EPA standard of 0.15 $\mu\text{g}/\text{m}^3$ on a 3-month average.

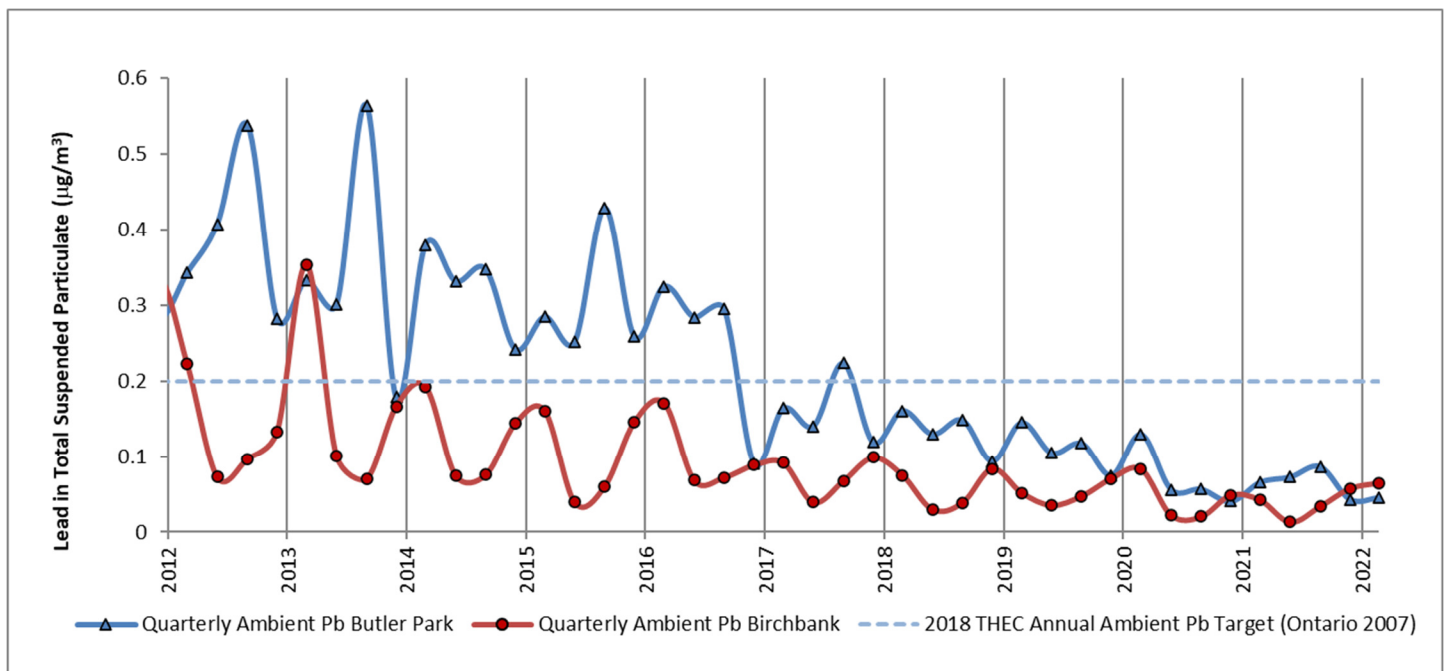


Figure 1: Quarterly monthly average lead at Butler Park and Birchbank stations (as total suspended particulate measured bi-daily)

The chart in Figure 1 shows quarterly averages for Lead in air for Butler Park (dark blue) and Birchbank (red), in comparison to the 2018 THEC Annual Ambient Lead in Air Objective (dashed line).

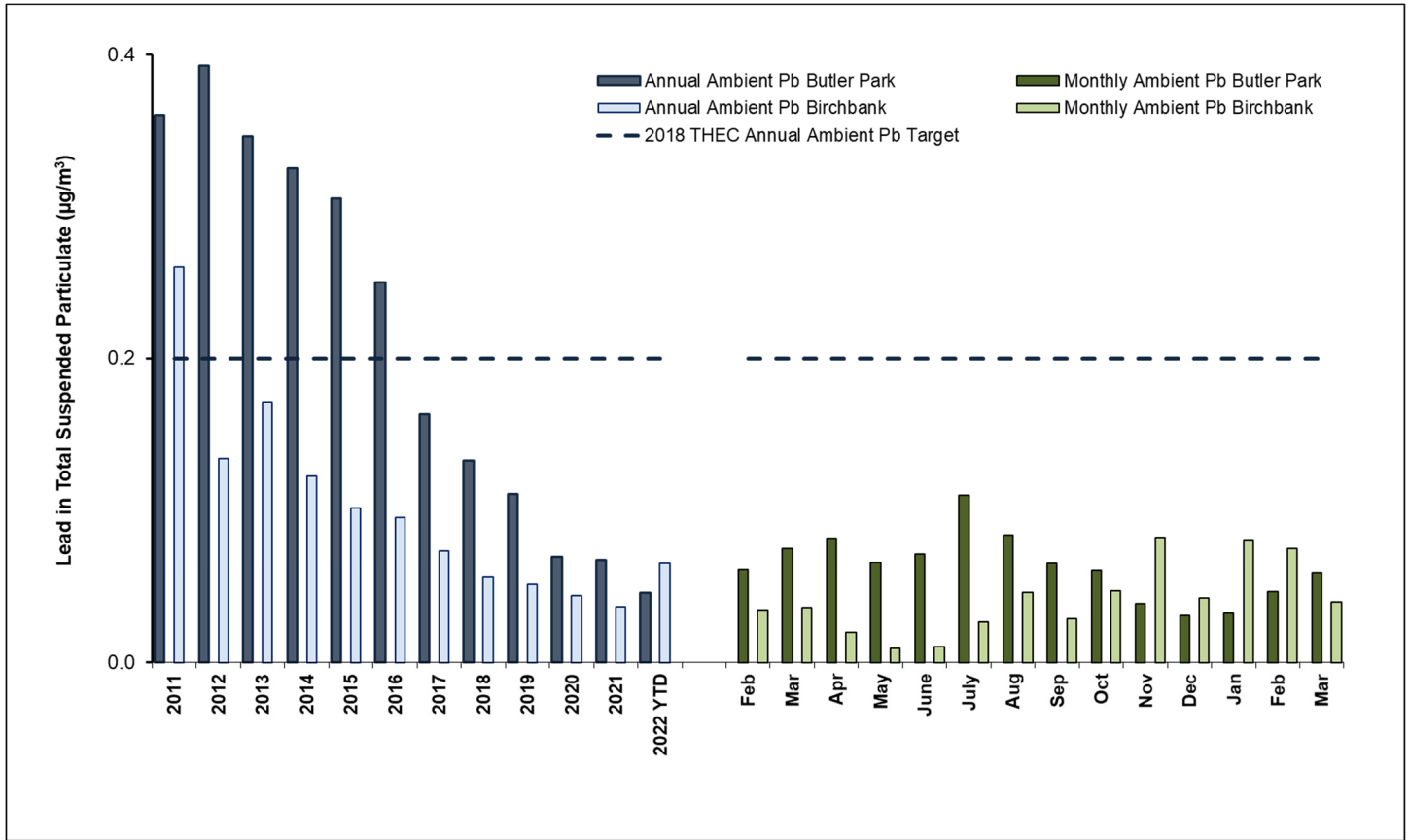


Figure 2: Annual and monthly average lead at Butler Park and Birchbank stations (as total suspended particulate measured bi-daily)

The chart in Figure 2 shows annual and monthly averages for Lead in air for Butler Park. Annual averages are shown on the left for Butler Park (dark blue) and Birchbank (light blue). Monthly averages for the past year are shown on the right for Butler Park (dark green) and Birchbank (light green). The 2018 THEC Annual Ambient Lead in Air Objective is shown as a dashed line. Monthly averages for Lead in ambient air are expected to have some variability due to season, weather, predominant wind direction and operational variance.

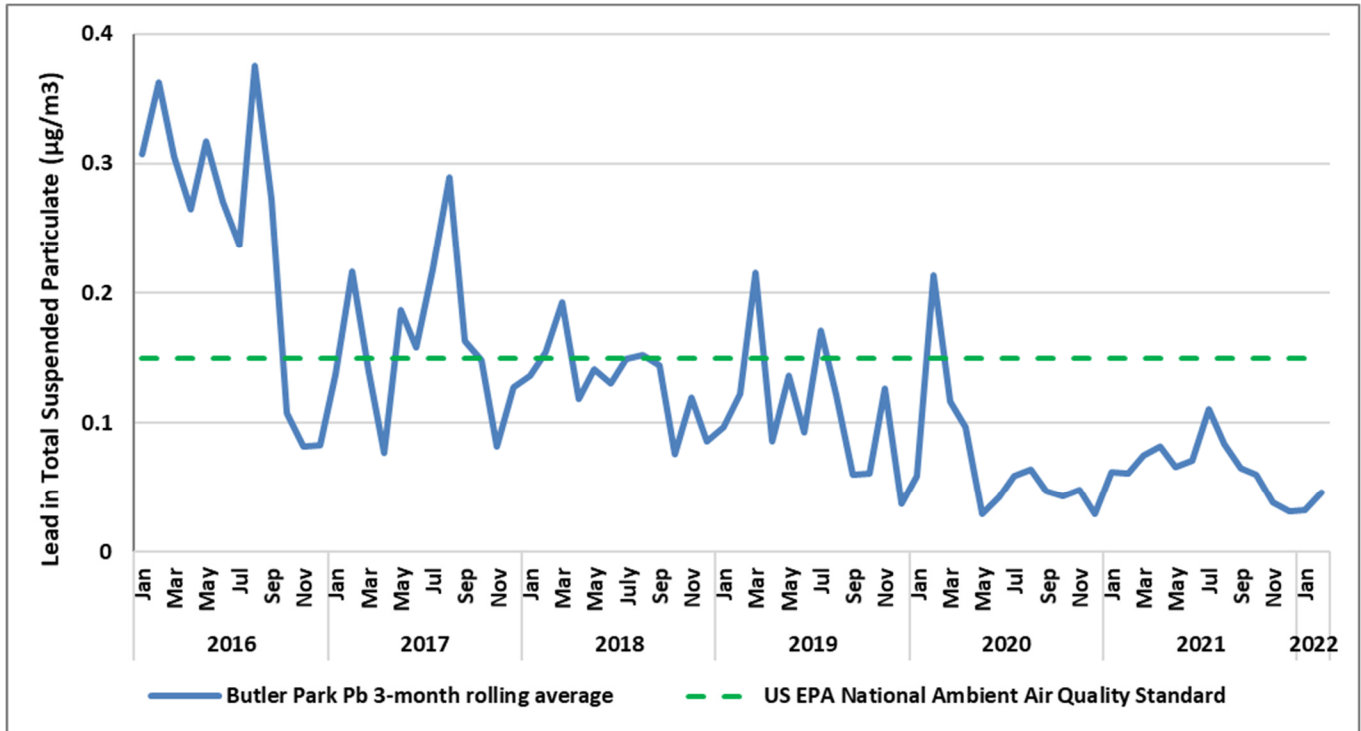


Figure 3: 3-month rolling average lead in air at Butler Park station (as total suspended particulate measured bi-daily)

The chart in Figure 3 shows the 3-month rolling average for lead in air for Butler Park (blue line), in comparison to the US EPA standard (green dashed line).

2. Arsenic in Air:

Averages for arsenic in air continue to be at historical lows. Similar to the first quarter 2022 lead in air, first quarter 2022 arsenic in air was higher at Birchbank ($0.0035 \mu\text{g}/\text{m}^3$) than at Butler Park ($0.0022 \mu\text{g}/\text{m}^3$), attributed to predominance of winds from the south and southeast.

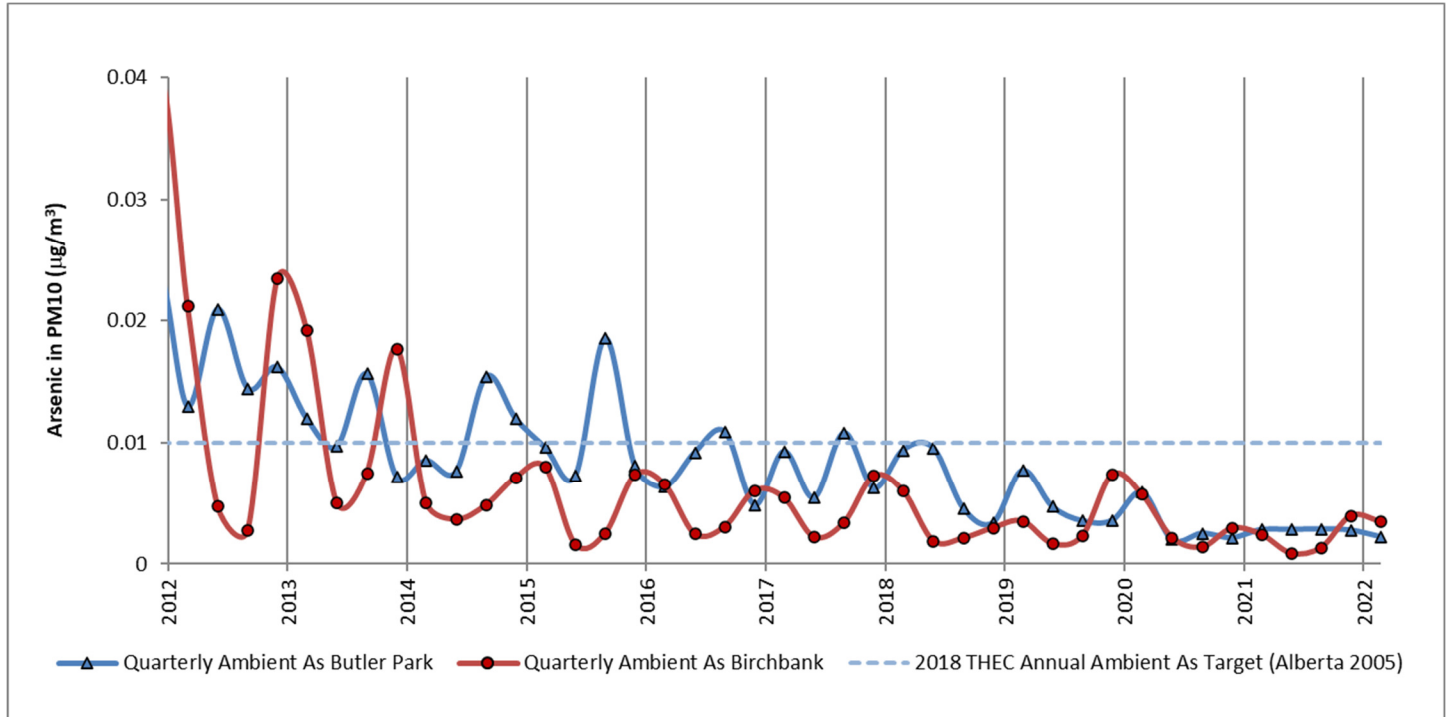


Figure 4: Quarterly average arsenic at Butler Park and Birchbank stations (as inhalable PM₁₀ fraction measured weekly)

The chart in Figure 4 shows the annual average for Arsenic in air (measured as inhalable PM₁₀ fraction) at Butler Park (blue) and Birchbank (red) in comparison to the 2018 THEC Air Quality Objective (blue line).

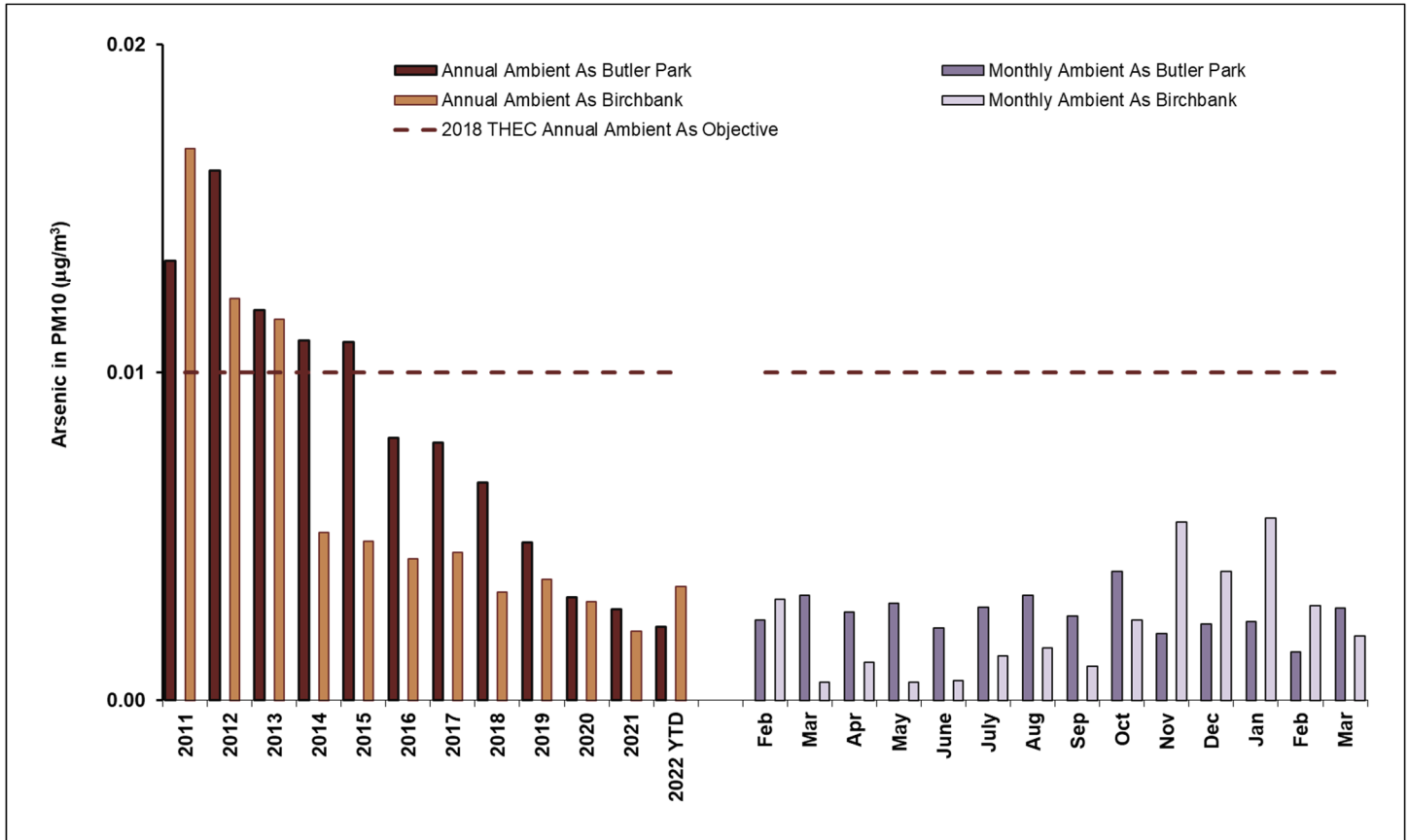


Figure 5: Annual and monthly average arsenic at Butler Park and Birchbank stations (as inhalable PM10 fraction measured weekly)

The chart in Figure 5 shows annual and monthly averages for Arsenic in air at Butler Park and Birchbank. Annual averages are shown on the left for Butler Park (dark brown) and Birchbank (light brown). Monthly averages for the past year are shown on the right for Butler Park (dark purple) and Birchbank (light purple). The 2018 THEC Air Quality Objective is shown as a dashed line. Monthly averages for Arsenic in ambient air are expected to have some variability due to season, weather, predominant wind direction, operational variance and sampling frequency.

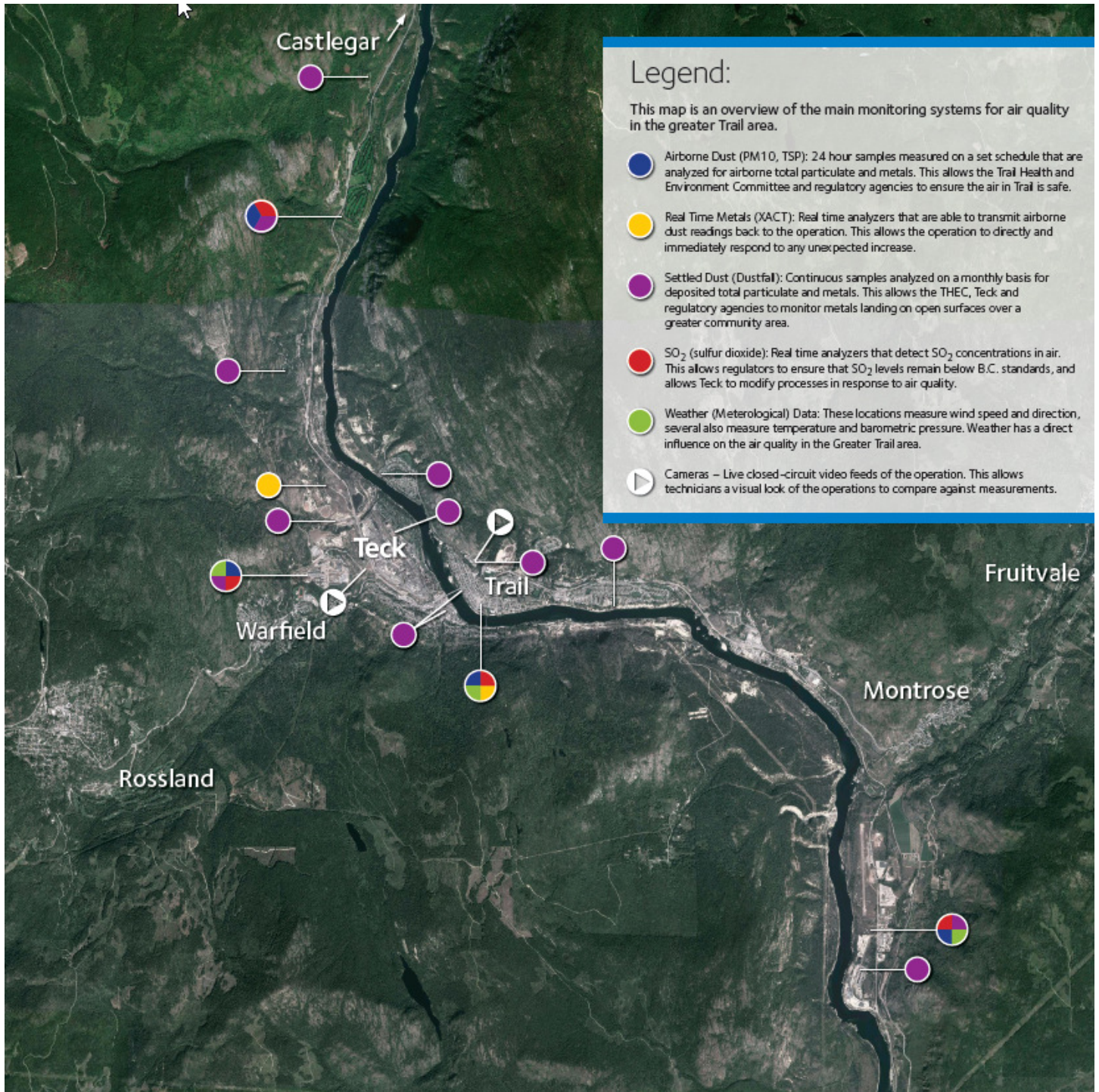


Figure 6: Teck Community Air Monitoring Stations

Family Health Report



FAMILY HEALTH REPORT

April 26, 2022

RECENT HIGHLIGHTS

1. Healthy Family Visits
2. Community Outreach
3. Fall 2022 Blood Lead Clinic Dates

ADDITIONAL DETAILS

1. Healthy Family Visits
 - 19 Healthy Family visits completed in 2022, either in person at Kiro Wellness Centre or Home Visit
 - Working with Wendy to offer outstanding HFHH visits to those families that did not receive them in 2021
2. Community Outreach
 - Attending Building Beautiful Babies monthly
 - To start attending Muffins and Munchkins in May
 - Plan to offer further daycare outreach with Wendy
 - Plan to attend Teddy Bear Picnic in June
3. Fall 2022 Blood Lead Clinic
 - Early Planning Stages for September 2022 Blood Lead Clinic. 6 clinic days (2 days per week over 3 weeks) will be offered.

Home & Garden Report

April 22, 2022

1. Soil Management Program:

- a. Remediation offers have been sent out to top priority properties and so far 43 property owners have accepted. Action for these properties will include Yard Improvement (YIMP) Partial Soil Replacement, or Full Soil Replacement and got underway as of April 18th.
- b. Gardens around the community have also begun this spring, and 4 properties are planned for either soil replacement or topsoil drop-off.
- c. Soil Assessment, Ground Cover Evaluations (GCE's) and YIMP will be slower than anticipated this spring, due to staffing shortage, and will proceed as quickly as possible when we are back to full staff (mid- to late- May).

2. Healthy Homes:

- a. Healthy Home visits
 - i. 19 visits have been completed in 2022.
 - ii. Busy with phone calls and requests as several families have been re-connecting after the winter.
- b. Enhance Support (ES)
 - i. Residential Lead Inspections have been offered and completed with 3 new participants. Results are still outstanding and will be reviewed with families once received.

3. Lead Safe Renovation:

- a. 14 residents have accessed supplies to perform their renovations this year.

4. Outreach and Engagement:

- a. Trail Market - Incredible Easter market was a huge success! Over 4700 people attended and, being that it was a family-focused event, staff made excellent connections.
- b. Community Program Office calls have increased remarkably with homeowners reaching out about upcoming yard projects, looking for soil management supports, and general enquiries about THEP programs.
- c. Family Action Network – AGM is May 4th at 1 pm.

Community & Committee Check-in

Report from Community Engagement Working Group to THEC

April 2022

Review of the Context

- Genuine community engagement has been a widely recognized strength of Trail's approach
- In the early days (1990s), community was directly involved in decision-making to set action plans
- Involvement of community reps (on THEC and/or working sub-groups);
 - bolsters community trust in programs
 - adds valuable local insight to discussion of action options/plans
 - can be complementary to, and consistent with, regulatory frameworks

Purpose of the Community Engagement Renewal Plan

- Describe the role of community and to set out a plan for how community contributions should be valued and effectively utilized going forward, in the Trail Area Health & Environment Committee / Program.

Plan Overview

- The plan begins with a goal to increase and improve the depth, representativeness and effectiveness of community participation in the THEC and its sub-groups and a second goal to increase and improve the reach and engagement of THEP programs and communications;
- This is followed by context to explain the current situation and why community input is still relevant and needed as well as the limitations;
- A discussion follows on who should be engaged, why and how, including a recognition that community is not homogenous and that recruiting individual parent volunteers is a challenge;
- The suggestion is made to look at stakeholders in the community, and representative groups, which may provide broader feedback; and lastly
- A plan for recruitment and increased representation is proposed including a schedule and indicators of success.

Monitoring

How will the THEC know if we are successful?

- Increased interest in the THEC from community members at large;
- At least six THEC community members represented on the THEC and/or Working Group;
 - Members should be from at least two different target groups (i.e. early childhood education, business, realtor, etc); and
- New (and existing) members feel heard and valued.

Request to THEC (April 26, 2022)

- Comments and/or questions on the plan;
- Endorsement of the plan and support for recruitment of potential members; and
- Continuation of the working group for occasional feedback sessions to share progress and seek advice.

Community Engagement Working Group Update

April 26, 2022

1

Working Group

- Steve Hilts (chair)
- Michelle Laurie (facilitator)
- Clare North
- Wendy Goodrich
- Cindy Hall
- Jayne Garry
- John Aiken
- Ron Joseph

2

Draft Plan for Community Engagement Renewal

- History/context
- Role for community input now
- Plan for:
 - expanding and improving community participation in THEC
 - reaching out and getting people/groups interested
 - developing approaches that work for different community members
 - improving reach of THEP programs and communications
- Goals:
 - Including aiming to get to 6 community reps on THEC and/or WGs
- Implementation by Michelle and the Program Team, with check-ins by the WG and THEC

3

From THEC at this Point

- Questions/comments/concerns?
- Consensus to proceed with the plan?

4

Community Engagement Renewal Plan

Draft for Discussion

Community Working Group

Trail Area Health & Environment Committee

April 2022 V 1.4 for THEC Review

Contents

- 1 Purpose 3
 - 1.1 Goals and Objectives 3
 - 1.1.1 Goal 1..... 3
 - 1.1.2 Goal 2..... 3
- 2 The Context and Role for Community Input in the Trail Area Health & Environment Program and Committee 3
 - 2.1 Historical Context..... 3
 - 2.2 Current Context 4
 - 2.3 Who is “Community”? 5
 - 2.4 The Crucial Role of Community Input 5
 - 2.4.1 Why is Community Input Needed at this Point?..... 5
 - 2.4.2 Benefits of Community Engagement and Involvement 5
 - 2.4.3 Examples of How Community Input CAN be Used 6
 - 2.4.4 Examples of Limitations of Use of Community Input 6
- 3 Considerations for Planning Renewed Community Engagement..... 6
 - 3.1 Current Forms of Engagement and Representation within THEC..... 6
 - 3.1.1 How is community currently engaged in THEC? 6
 - 3.1.2 How is community represented in THEC? 7
 - 3.2 What is working or lacking in terms of community engagement / representation? 7
 - 3.3 Who should be recruited/engaged and why? 7
 - 3.4 How Should New Recruitment be Conducted (Goal 1)? 11
 - 3.5 How Should Existing and New Individuals/Groups be Engaged (Goal 2)? 11
- 4 The Plan for Renewed Community Engagement 11
 - 4.1 Recruiting for Renewal/Expansion of THEC (and its working groups) 11
 - 4.2 Expanding Outreach for Programs and Communications/Consultation..... 12
 - 4.3 Groups and Methods of Engagement 12
 - 4.4 Schedule..... 13
 - 4.5 Monitoring and Evaluation 14

1 Purpose

The purpose of this document is to describe the role of community and to set out a plan for how community contributions should be valued and effectively utilized going forward, in the Trail Area Health & Environment Committee / Program.

To support this, the broader context of THEC/THEP and its structure, including community participation in the past and present, is first reviewed as are the definition of “community”, the rationale for continued engagement, the limitations for appropriate use of community input, and the challenges that are expected going forward. Then, a plan for recruiting representative/targeted community individuals and groups and engaging them meaningfully and purposefully is presented.

1.1 Goals and Objectives

1.1.1 Goal 1

To increase and improve the depth, representativeness and effectiveness of community participation in the THEC and its sub-groups:

- Build a communication plan that clearly explains the value and role of community participation, by Q2 2022
- Develop a plan for how THEC and its working groups will meet and work effectively together going forward, by Q3 2022 (dovetail with strategic plan for 2023+)
- Recruit up to 6 new members for THEC and working groups, from the key target groups in this plan, by end of 2022
- Develop a plan for how the increased and improved community participation will be sustained (dovetail with strategic plan for 2023+)

1.1.2 Goal 2

To increase and improve the reach and engagement of THEP programs and communications:

- Update the THEP communications plan by end of 2022, with the program team, to ensure target audiences (broader community school age children, elderly (related to SO₂) and others align with strategic directions of the program. Include justifications for including groups/audiences and also the reasons for not including those that may be excluded.

2 The Context and Role for Community Input in the Trail Area Health & Environment Program and Committee

2.1 Historical Context

From 1990 through 2000, the Trail Community Lead Task Force (Task Force) led a series of studies to inform the development of recommended actions, services and supports that would collectively prevent against and/or reduce exposures to current and historical emissions from Teck (at that time Cominco) metallurgical operations, with the primary focus being on lead and young children. The Task Force was chaired by the Mayor of Trail and representation included the BC Ministries of Health and Environment, Teck, other local government and the community at large. The Task Force directly conducted research and program development with funding from Teck, the province of BC and the City of Trail. Therefore, this was a genuine community/government/industry partnership - the community participated directly

in decision making about work conducted and recommendations made. The strong community role was widely regarded, even internationally, as a key success factor in Trail.

When the Task Force was formed, there was not yet any detailed regulatory framework for addressing impacts to soil/property caused by historical emissions. In 1997, the BC Contaminated Sites Regulation came into effect. The Task Force completed its mandate at the end of 2000, by providing a series of reports and a set of recommendations to the BC Minister of Environment.

2.2 Current Context

The Trail Area Health & Environment Program (THEP) is the name for the group of activities/services/supports, delivered by Teck, the City of Trail and Interior Health (IH), which reflect the recommendations made by the Task Force in early 2001. The THEP has a multistakeholder governance committee, a select committee of the City of Trail – the Trail Area Health & Environment Committee (THEC). The THEC composition is essentially the same as that of the former Task Force – it is chaired by the Mayor of Trail and representation includes Interior Health (IH), BC Ministry of Environment and Climate Change (BC ENV), Teck, other local government elected officials and the community at large. There has been less participation in recent years of non-elected members of the community as the role and need are less clear than they were in the formative years of the programs.

The two provincial regulatory agencies (IH and BC ENV) have authority under BC legislation and regulations to direct actions and/or conduct assessments to ensure protection of the environment and public health. BC ENV directs and approves the land (soil) remediation actions that must be taken by Teck, through a Wide Area Remediation Plan. BC ENV is also the primary regulator of Teck's ongoing aerial emissions, including metals such as lead and gases such as sulphur dioxide (SO₂), to the environment. The delivery of public health components of the THEP (home visits by community health nurses, children's blood testing clinic for lead) relies on the authority and expertise of IH to conduct such work. The Medical Health Officer has an explicit positional mandate to ensure protection of public health as well as sitting on the committee and working with the program team, Chair of the THEC and THEC (and its executive) to suggest and implement ongoing program improvements. In addition, the Provincial Health Officer has formed a Provincial level committee to conduct a Trail Health Review (THR). IH also has a key role as an agency formally referred to for input by BC ENV.

The role of members of the community at large changed from the Task Force era to the THEC era from one of directly sharing responsibility for decisions to one that is more about monitoring the ongoing delivery of actions/supports and providing feedback to the committee partners and the program staff. Despite the community now having less need to develop new actions to take, community input still has high potential value to all parties. Research by THEP to ensure programs address the social determinants of health validated that meaningful involvement of people in decisions affecting their life/health is itself an important determinant of health. Effective citizen participation requires a facilitative effort because of the complexity of the issues, competing demand for volunteers in the community and a perception that the program is handled by experts. That said, community members will voice their perspectives if they are empowered and listened to. Local insight and opinion are indispensable in developing clear messages for broader public communications, ensuring that new program components and policies are relevant and will be viable and effective 'on the ground'. These also bolster public support and acceptance of the approaches taken by Teck, the regulators, and the program team.

2.3 Who is “Community”?

In the context of the THEP/THEC, the following are considered as the “community” (i.e. “grass roots” community, or “community at large”, as opposed to officials formally elected to govern and represent the community):

- Community representatives on the THEC
- Community members of THEC working groups
- Members of the community who provide input through various available means (e.g. survey responses, website/email and feedback to program staff while in the community delivering services, meetings and focus groups)

Elected representatives of the City of Trail and other local government bodies, either when serving as members of the THEC, or when issuing comments or recommendations/requests directly to Teck, ENV or IH on issues pertinent to THEP, are considered to be representing their constituents in a way that is distinct and separate from “Community Input” into the THEC as described in this document.

2.4 The Crucial Role of Community Input

2.4.1 Why is Community Input Needed at this Point?

Some community members have asked why their input would still be needed at this time given the comprehensive program in place. Their perception is that programs to address smelter-related metals in the Trail environment have been ongoing for 30 years and, because conditions are known to be so much better today, they wonder why the community should pay much attention to the continuing work. The answer is that while tremendous progress has been made in reducing smelter emissions and children’s blood lead levels, there is more to be done. Continuing to make progress at an acceptable pace is crucial for enabling local residents and business owners, plus potential investors and visitors from outside the community, to feel confident that Trail will be a thriving and healthy community for decades to come.

What more remains to be done? Significant work remains to address soil in the community and to continue reducing smelter air emissions, and it is not feasible to complete it all at once in a short timeframe. There are ongoing choices to be made about which actions to prioritize and where and how best to measure and define ultimate success. The path to a final work plan for remediation that will satisfy regulatory requirements is not straightforward or simple. People in the community, and/or on the Committee are generally aware that guidance and direction about the work that remains comes mainly from legislation, regulations and policies under the BC Ministry of Environment and Climate Change and the Interior Health Authority. They may feel therefore that there is no need or “room” for their input. In actuality, local insight, opinion and involvement are indispensable in developing clear messages for public communications and ensuring both that new program components and policies are relevant and will be viable and effective ‘on the ground’ and that the actions taken will be supported and accepted. In addition to the actions required by regulation, which will be focused on soil contamination and air emissions, there is still important ongoing work to understand and address other important sources of lead exposure such as dust and paint in homes, older pipes, consumer products and yard conditions. In addition to these questions and actions that are focused mostly on lead, other smelter emissions require study, public communication and actions from time to time. Past/ongoing examples include cadmium, arsenic and thallium and currently there is some focus on sulphur dioxide.

2.4.2 Benefits of Community Engagement and Involvement

- Increased buy-in/trust from the broader community
- Regulators are informed and policies have more potential for support

- Policy is informed by on the ground, local experience; feedback loops are shortened
- Teck and the City are in touch with community priorities and preferences
- Action planning can incorporate local insights and knowledge
- Local concerns can be heard and addressed in a timely fashion, avoiding potential misunderstandings and increasing accountability of the program to the community

2.4.3 Examples of How Community Input CAN be Used

- As input to add to THEC consensus process on program changes and adaptations
- For consideration by regulators, when consistent with regulatory requirements (at discretion of the regulator(s) and/or Teck), for example:
 - The Air Quality Working Group has been jointly working on communications for public messaging around sulphur dioxide in the community
 - Providing insight into behavioural changes that often need to accompany technological changes / policies for success
- For consideration by THEC, for example:
 - If community wanted to promote recommendations for changes to supports offered as part of the Lead Safe Renovation Program, which is not a program that is required under regulation
 - If community wanted Teck to be more transparent on internal targets for reducing fugitive dust emissions and the action plan to meet targets
- To increase understanding how policy and programs are working on the ground (i.e. perception survey after soil management expansion, Healthy Families Healthy Homes survey)
- To keep history and context alive (by having longstanding community members staying active)
- To bring local questions and concerns to light (THEC meetings, liaising with program team)
- To advocate for local voices in decisions that happen to Trail yet are made elsewhere

2.4.4 Examples of Limitations of Use of Community Input

- Decision making is outside scope of community (though they are very much able to influence decisions by sharing views as part of THEC).
- Input or advice contradictory to regulatory requirements cannot be applied. The relevant regulators are singly responsible for determining which recommendations are contradictory to or consistent with regulatory requirements.

3 Considerations for Planning Renewed Community Engagement

3.1 Current Forms of Engagement and Representation within THEC.

3.1.1 How is community currently engaged in THEC?

- Community is engaged in THEC similarly to all other members of the Committee. Community members are a recognized partner on the Committee as are IH, ENV, Teck, the City of Trail, RDKB Area A, B and the Village of Warfield. Specific time is allocated at each meeting (five/year) for community representatives and/or the public to voice their questions, concerns and share what is on their minds. When there are Working Groups, community members are encouraged to join and share their views. The Chair and Committee actively seek input from the community members during meetings as well as in Working Groups. Often, meetings are reporting-based and don't have specific requests from the Committee leading to limited space for input. However, questions and suggestions are always accepted and encouraged.

- Occasional communications and check-ins occur with community members when the THEC lead facilitator is sourcing historical information or looking for input on draft communication pieces and how they may resonate with the community.

3.1.2 How is community represented in THEC?

- As per the current terms of reference, community members (or representative community organizations) may fill up to six seats on the Committee, which would be the largest block of representatives. Over the last five years, there have typically been two to four active community members on the THEC at one time. As of February 2022, there are three community representatives on the THEC.

3.2 What is working or lacking in terms of community engagement / representation?

- Community members that actively engage typically have a history with the THEC and a longstanding record of participation and interest. This has been very helpful for keeping a record of past events, understanding why certain decisions were made, expressing the need for ongoing improvement as well as celebrating achievements.
- A challenge has been recruiting new and interested community members, including parents / representatives of young children, to play a role on the THEC. The reasons for, and value of, participating have been less clear in recent years.
- Community members that have participated in the Home & Garden / Family Health programs have been responsive to requests for feedback via online surveys.

3.3 Who should be recruited/engaged and why?

- THEC prides itself on being a Committee of excellence. Ensuring that all voices (especially those most relevant in terms of being potentially impacted and/or having particular insight or experience) are represented and heard is an indicator of good governance. In the past, it has been a cornerstone of the “way we work”, leading to increased trust in the delivery of programs and strong participation rates in programs that in other communities have often had much lower uptake, e.g. voluntary blood lead clinics.
- Many of the discussions that THEC undertakes will continue to include concepts such as risk, perception of risk, uncertainty and behavioural change. Policies that get developed are a product of the interactions, participation, research and views that get supported. Ensuring a range of views from people that will live the experience of the policies and programs put in place is critical to the success of program implementation.
- The table in this section lists the types of individuals and organizations that ought to be targeted in the effort to renew community engagement. Some will be considered as recruitment targets for THEC, some for specific working groups, some just for specific outreach from time to time -to provide them with updates or to seek input on issues/questions.

Target Type	Specific target examples	Why?	For THEC and working groups, or for periodic engagement?
Parents (and expectant	Parents residing in the city of	Primary beneficiary	Both – THEC rep

Target Type	Specific target examples	Why?	For THEC and working groups, or for periodic engagement?
parents) of young children	Trail (Area 2 and 3) and parents in surrounding areas (Area 1). Parents already in THEP (subgroup of the 2 examples above)	of programs; guardian of 'vulnerable' population	currently needed Both Both
Grandparents and other regular, informal caregivers of young children	Grandparents/caregivers residing in Trail	Beneficiary of programs; Caregivers of 'vulnerable population'	Primarily for periodic engagement, but THEC or WG as well, if keen
Adult residents of Trail and area in general	People residing in Trail, or Area 1	May have interest in and valuable insights about smelter-related emissions in the environment	Both – currently three on THEC, two of whom reside outside the main program areas
Formal daycare providers	Daycare centre operators in Trail Daycare centre operators in "Area 1"	Partner in messaging and exposure reduction	Both Periodic engagement
Early Childhood Education Providers/ Organizations	Lower Columbia Family Action Network, FAIR Family Navigator, Metis Nation, COINS	Partners in long term health of children in the community	THEC (some representation currently)

Target Type	Specific target examples	Why?	For THEC and working groups, or for periodic engagement?
	New daycare centre in Tadanac (Unicorn Daycare)		Both
Primary and/or Secondary Education Providers/ Organizations	School District 20	Effective and influential conduit for information to students and parent	Periodic engagement (currently) THEC or WGs going forward?
Real Estate Professionals/ Organizations	Realtors Lenders Legal/Notary	In touch with the questions/concerns of people moving in and out of Trail and area Interest in risks to property values In touch with questions/concerns of lenders, owner/sellers and purchasers	Both ideally Periodically Periodically
Local Governments	City of Trail Village of Warfield	Represent constituents that have direct benefits from program	Local government reps are members of THEC

Target Type	Specific target examples	Why?	For THEC and working groups, or for periodic engagement?
	RDKB (Area A/B)		
Local Businesses	<p>Home renovation contractors</p> <p>Roofers</p> <p>Home building supply stores</p> <p>Landscaping/gardening contractors</p> <p>Construction/excavation</p> <p>Other lead-related businesses</p>	<p>Knowledge can increase health & safety of contractors and DIY homeowners</p> <p>Opportunity to do outreach exists if relevance made clear</p> <p>Soil disposal is regulated and many people are not informed of this</p> <p>KC Recycling</p>	<p>Periodically</p> <p>THEC</p>
Indigenous governments/leaders/ community members	<p>Sinixt, Ktunaxa, Sylix, Secwepemc First Nations</p> <p>Groups that serve First Nations families, such as COINS for example, are</p>	Each maintains that their traditional lands overlap Trail and area	<p>Option for participation in all</p> <p>Representation as a Government (rather than community) should also be explored if</p>

Target Type	Specific target examples	Why?	For THEC and working groups, or for periodic engagement?
	noted above in ECE organizations		participation is desired

3.4 How Should New Recruitment be Conducted (Goal 1)?

Once a compelling and inspiring rationale for participation is generated, a recruitment campaign should be initiated. Current methods have included ‘volunteers wanted’ advertisements in the biyearly THEP newsletter as well as the Trail Times. These methods have not resulted in recruitment. Benefits of participation should also be highlighted and considered to entice new and expectant parents to join.

Recruitment will likely require more direct solicitation and engagement with community members via phone, email, and coffee chats. Presentations at events and in workplaces may also generate interest which can be followed up on. Using the program team to identify potential leaders in the community has often yielded positive results.

In order to ensure that newcomers get the information needed to reduce stigma and fear, recruitment from the realty sector would be helpful.

3.5 How Should Existing and New Individuals/Groups be Engaged (Goal 2)?

Making it easier for both new and existing committee and community members to engage needs to be thought through, as well as defining what participation looks like. For example, community members on the committee may not be able to attend five evening meetings or may not be feel comfortable expressing themselves in the current meeting setting/context. There is a need to consider various options and formats for community to engage as well as to boost local capacity and knowledge to participate.

4 The Plan for Renewed Community Engagement

4.1 Recruiting for Renewal/Expansion of THEC (and its working groups)

This section sets out the plan for recruiting replacement THEC members when needed, and for additional members to expand upon representation.

Target Type	Specific Target	Replacement currently needed, or expansion?	Outreach Methods	Key Messages
Parents (and expectant parents) of Young Children	Families residing in Trail	Replacement (overdue)	Through Family Health and Home & Garden Program	Parents’ input is essential to ensuring a healthy, safe

Target Type	Specific Target	Replacement currently needed, or expansion?	Outreach Methods	Key Messages
	Families already in THEP	Replacement (overdue)	contacts	environment for raising children in Trail.
Daycare providers and/or caregivers	Daycares Grandparents	Needed Needed	Trail FAIR, direct to daycares Seniors associations (South Kootenay seniors)	It takes a community to raise champions. Use your voice to ensure our local environment is always healthy and safe for children in our care.
Early childhood development community	Networks and Associations	Expansion	FAN, early years coalition	Together, let's champion securing the best outcomes for young children.
Realtors	Realtors	Needed	Biannual presentation; direct contact	Educate newcomers on how Trail can be the best place to invest and raise a family.
Business and investment community	Owners or representatives that are proud of Trail's industrial heart.	Needed	Chamber of Commerce, direct contact	Invest in the health and well-being of Trail.

4.2 Expanding Outreach for Programs and Communications/Consultation

There is a continuum of engagement – it is not the same for everyone, nor does it have to be. Different 'levels' of engagement should be utilized: ongoing and in depth (THEC), from time to time or as needed (consultative group) working groups (topical items) focus groups, etc.

4.3 Groups and Methods of Engagement

Group	Continuing Methods of Engagement	Improvements to Continuing Methods	New Methods of Engagement	Key Messages
THEC members	Regular meetings	Accommodating remote participation effectively Alternate meeting locations/times Provide meals, daycare or stipend for those with children	Special meetings to discuss single issues Surveys/ThoughtExchanges? Increase interaction during meetings.	Shift from “This is what we did” to “What do you think of x ,y, z”?
THEC Working Groups	Air Quality Working Group Community Working Group	Aim for some in person meetings Vary times to allow for increased community participation	Task specific	Express the need and ‘why’ participate

4.4 Schedule

April – Recruitment effort via ongoing meetings, THEP newsletter, other newsletters; share plan at THEC meeting and seek endorsement.

May – Broad outreach to target groups in the community via 1:1 conversations and recruitment, invite to THEC meeting, input into renewed strategic plan

June– Continue outreach and seek up to three additional community reps attending THEC meeting.

July/Aug –

Sept – Continue outreach and seek endorsement of new THEC community members at THEC meeting.

Oct -

Nov -

Dec – Celebrate increased community involvement and representation.

4.5 Monitoring and Evaluation

How will the THEC know if we are successful?

- Increased interest in the THEC from community members at large
- At least six THEC community members represented on the THEC and/or Working Group
 - Members should be from at least two different target groups (e.g. parent, business, realtor, etc)
- New (and existing) members feel heard and valued.

Program Planning Update



Communications Plan – update 2022

The Trail Area Health & Environment Program (THEP) works to support community health and wellbeing in an area influenced by smelter air emissions. There are five program areas that work together to achieve this task:

- Family Health
- Home & Garden
- Air Quality
- Parks
- Property Development

Community engagement is at the core of the THEP and the communication plan is key to delivering information and updates regarding program activities. Over the years, a variety of communications products, events and engagement initiatives have been undertaken by THEP in order to reach its intended audience.

A communications plan was developed in 2020 with the aim to bring together existing messaging and activities with a proactive look to the future. With COVID, methods of communication changed rapidly, many communications went online and the website emerged to be a hub for signing up for programs and finding answers to questions.

This spring (April – May 2022), the program team is updating the communications plan and will be aiming to do an annual renewal as time goes on. This plan dovetail's well with the Community Renewal Plan which requires increased communications and engagement in the community.

To follow are THEP's communication goal, objectives and audiences to help raise the Committee's awareness of work being undertaken in the communications/outreach sphere. The full plan is available upon request.

THEP Communications Goal

To help people in Trail and surrounding areas better understand the potential human health risks related to historical and ongoing smelter air emissions, additional sources of Pb in the community, and communicate actions to reduce human exposure.

THEP Communications Objectives

1. To share current THEP information with all expectant parents, families and caregivers in Trail and area.
2. To be a go-to source for information on all programs, science and development related to community lead/sulphur dioxide exposure, health impacts, and early child development programs, locally and beyond.
3. To ensure all committee members and partners know about the work THEP is doing in the community.

THEP Audiences

Primary

- Expectant parents and prenatal educators
- Families: parents, guardians, children
- Infant and child caregivers including babysitters, grandparents and daycares
- Residents (people without children)

Secondary

- Community navigators and connectors
- DIY Renovators
- Contractors that work in soil (landscapers, gardeners, excavation)
- Contractors that work in homes with historical lead, lead paint, etc.
- Work places where lead exposure may be a concern (Teck, battery recycling, etc)
- Health care workers
- People moving to Trail, potential residents, property developers and investors
- Knowledge sharing partners (Provincial, National, International)

Internal

- THEP program team and associated staff (IH, H&G, Teck)
- City of Trail staff (e.g, public works, front desk, administrators, council members)
- THEC government partners / committee members