

Teck Trail Operations

Fugitive Dust Update

December 1, 2022

The Teck logo is displayed in a bold, blue, sans-serif font. It is positioned in the bottom right corner of the slide, which has a white background. The logo consists of the word "Teck" in a single line.

Overview

Background

Progress to date

Current fugitive dust reduction initiatives

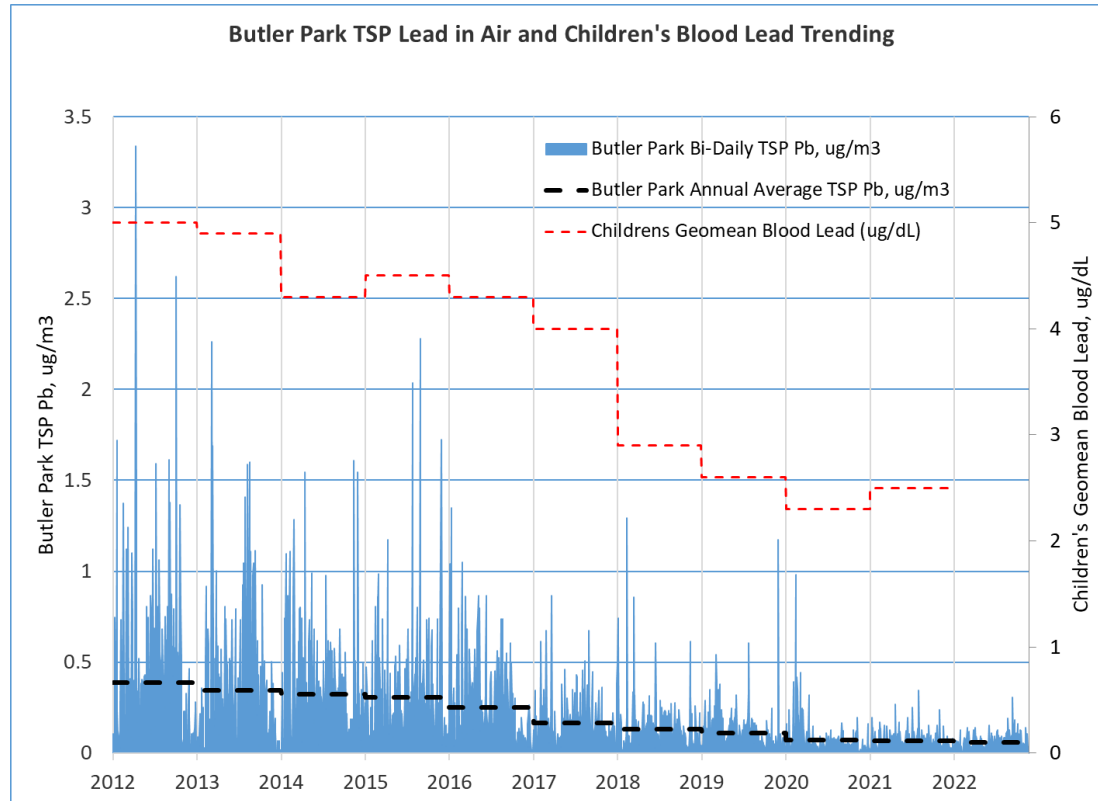
- Wind controls: engineering and studies
- Revisiting material movement at site
- New monitoring station

What is fugitive dust ?

Fugitive dust is dust that escapes from stockpiles, open handling of materials, buildings and vehicle traffic on and offsite. Fugitive dust is not stack emissions.



Fugitive lead emissions reduction, Progress to date



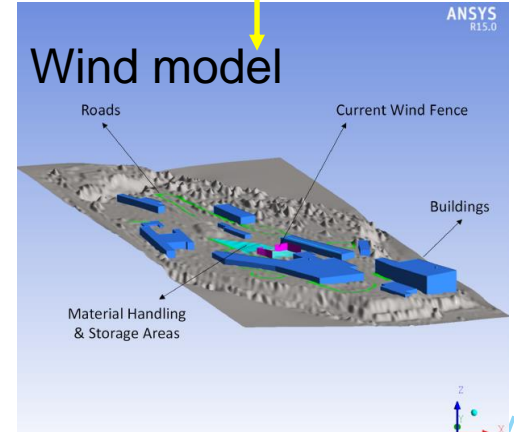
Current fugitive dust reduction initiatives

Wind controls

On-site material
movement review

New monitoring station

Wind controls: engineering and studies

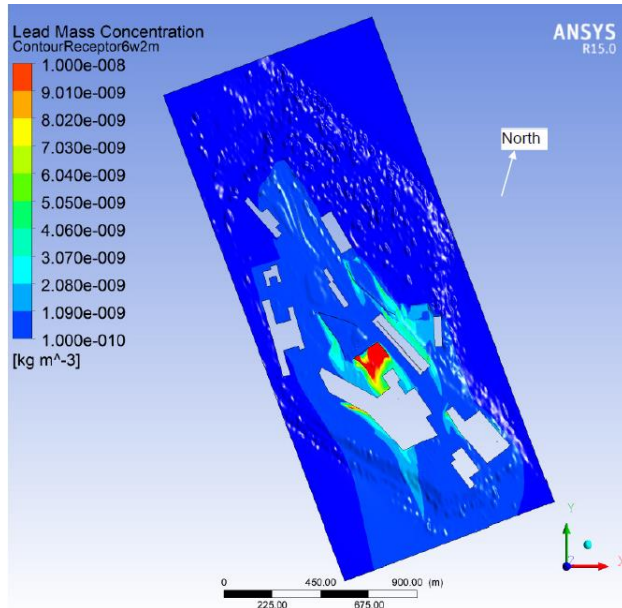


Wind controls: studies

Model results (subject to validation)

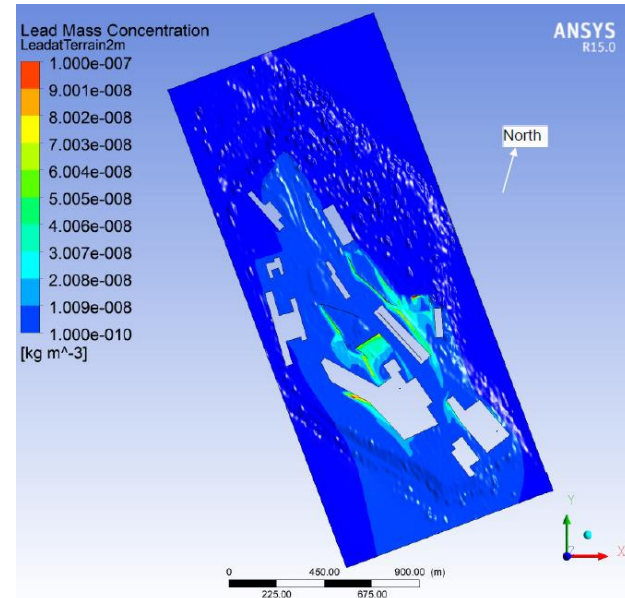
Base case (current wind fence only)

- Lead concentrations at 2 m elevation
- Wind: NW toward Downtown Trail,
- 1.1 m/s, stability D



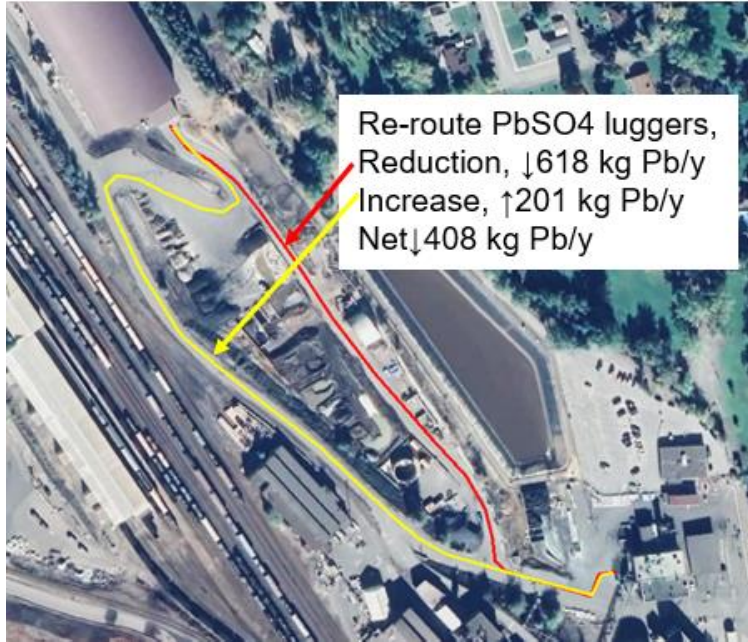
All wind fences considered (entire site)

- Lead concentrations at 2 m elevation
- Wind: NW toward Downtown Trail,
- 1.1 m/s, stability D



On-site material movement review

The estimate for road dust lead emissions is related to traffic count, vehicle avg. weight, vehicle speed, distance traveled, mass of total suspended particulate on the road surface, and Lead concentration.



New monitoring station at Haley Park



New monitoring station at Haley Park

Current Warfield station



New Haley Park station

