

Trail Area Health & Environment Committee



Summary

Meeting: Dec 1, 2022, 7:00 p.m.

Hybrid Location: Trail City Hall – Committee Room #2, Spokane St. Entrance & Zoom

Committee members in attendance:

Thea Hanson, Alternate Chair, City of Trail
Dr. Karin Goodison, Interior Health MHO
Kyle Jorgenson, USW Local 480 Rep
Clare North, Teck Trail Operations
Steve Hilts, Community Member (History)
Dan Bouillon, Teck Trail Operations

Carolyn Amantea, Village of Warfield
Colleen Delaney, BC Ministry of Environment
Erika Krest, Community Member (Chamber)
Tara Bullanoff, Alternate, Interior Health
Annick de Goede, Community Member (Parent)
Julia Stockhausen, Community Member (FAN)

Others in attendance:

Rajshree Balaji, Interior Health
Meghan Morris, Interior Health
Fran Noone, Village of Warfield
Nelson Ames, Community
Jayne Garry, Teck
Doug Hill, BC Ministry of Environment

Andrea McCormick, SNC-Lavalin
Cindy Hall, SNC-Lavalin
Christina Yamada, Interior Health
Frances Boreland, Broken Hill
Thompson Hickey, Teck
Michelle Laurie, THEC Lead Facilitator

The Trail Area Health & Environment Committee (THEC) meets five times per year online or in person. Members, designates and community members are welcome.

WELCOME AND INTRODUCTIONS

- Thea Hanson shared opening remarks and sent regrets of the new THEC Chair, Mayor Colleen Jones.
- She also welcomed new elected officials from the Village of Warfield (Carolyn Amantea and alternate Fran Noone).
- The Committee approved the recommendation for Ashley Melenchuk, a Trail parent and past Program participant, to join THEC as a community representative.

MEETING MINUTES

- The minutes from the September 22, 2022 THEC meeting were approved. They will be posted on thep.ca.

PRESENTATIONS, REPORTS, DISCUSSIONS, AND RECOMMENDATIONS

Children Blood Lead Clinic Results

Presenter: Dr. Karin Goodison, Interior Health Medical Health Officer

- See attached presentation.
- The draft Blood Lead Clinic Results media release was reviewed. The final version was shared via the City of Trail to their media contacts and is also posted on thep.ca.

Fugitive Dust Program Update

Presenter: Keith Klimchuk (Teck Trail Operations)

- See attached presentation.

Toddler Development Index and Program Development

Presenters: Julia Stockhausen and Cindy Hall (Family Action Network board members)

- See attached presentation.

PROGRAM REPORTS AND UPDATES

Air Quality

- Air Quality Report (see attached).
- Air Quality Working Group Update
 - Michelle Laurie, THEC Lead Facilitator, shared that the working group made minor updates to the Terms of Reference for clarity related to meeting schedule and participation. In addition, discussions ensue relating to regular reports to the THEC on SO₂.

Family Health Report – (see attached).

Home & Garden Report – (see attached).

Community & Round Table Check-In - All

- Increased community engagement and representation within THEC was noted. No further comments were raised.

Program Planning Update - Michelle Laurie, THEC Lead Facilitator

- A report on thep.ca website analytics was completed and is available in the package.
- Michelle shared highlights from the last few months, including working on indicators for the strategic plan, onboarding newly elected officials and THEC members, and communications work including the air quality monitoring station fence wrap.
- She ended the report inviting everyone to participate in an online survey via Thought Exchange to give input on 2023 meeting topics and formats. The link was sent after the meeting.

Partner Meeting Report – Thea Hanson, Alternate Chair

- Partners met on November 22 to introduce the new City of Trail Mayor, Collen Jones (Chair of THEC), the Trail City Council representative, Thea Hanson, and to review and discuss the blood lead presentation and draft media release.

2023 THEC MEETING DATES

- February 22
- April 20
- June 15
- September-December will be determined in the new year.

THEC meetings are held from 7:00-9:00pm.

Trail Area Health & Environment Committee

AGENDA



HYBRID Meeting: Dec 1, 2022, 7:00 p.m.

Location: Trail City Hall – Committee Room #2, Spokane St. Entrance

Online option: <https://us02web.zoom.us/j/83546199628>

Committee Members:

Colleen Jones, Chair, City of Trail
Thea Hanson, Alternate Chair, City of Trail
Dr. Karin Goodison, Interior Health MHO
Jane Power, Interior Health
Kyle Jorgenson, USW Local 480 Rep
Ron Joseph, Community Member (Resident)
Dan Bouillon, Teck Trail Operations
Clare North, Teck Trail Operations
Annick de Goede, Community Member (Parent)

Linda Worley, RDKB Area B
Carolyn Amantea, Village of Warfield
Ali Grieve, RDKB Area A
Cassandra Counce, BC Ministry of Environment
Colleen Delaney, BC Ministry of Environment
Erika Krest, Community Member (Chamber)
Steve Hilts, Community Member (History)
Julia Stockhausen, Community Member (FAN)

The Trail Area Health & Environment Committee (THEC) meets five times per year online or in-person. Members, designates and community members are welcome.

WELCOME and INTRODUCTIONS

- Opening remarks from Thea Hanson, Alternate THEC Chair

MEETING MINUTES

- Approve minutes from THEC meeting, September 22, 2022 (as attached)

PRESENTATIONS, REPORTS, DISCUSSIONS & RECOMMENDATIONS

Children Blood Lead Clinic Results (30 mins)

Presenter: Dr. Karin Goodison, Interior Health Medical Health Officer

- Q&A
- Media Release (Michelle Laurie, THEC Lead Facilitator)

Fugitive Dust Program Update (20 mins)

Presenter: Keith Klimchuk (Teck Trail Operations)

- Q&A

Toddler Development Index and Program Development (15 mins)

Presenter: Heather Glenn-Dergousoff, Julia Stockhausen and Cindy Hall (Family Action Network)

- Q&A

Program Reports & Updates (45 mins)

PLEASE NOTE:

All reports are provided in the agenda package for your review prior to the meeting. TO MAKE THE MOST OF OUR TIME TOGETHER, PLEASE BRING YOUR QUESTIONS OR ITEMS FOR FURTHER DISCUSSION.

Air Quality

- Air Quality Report (see attached; addressed during presentation on fugitive dust program)
- Air Quality Working Group Update – **Michelle Laurie, THEC Lead Facilitator**

Family Health Report – (see attached) **Meghan Morris, Interior Health**

Home & Garden Report – (see attached) **Andrea McCormick, SNC Lavalin**

Community & Round Table Check-In - All (15 mins)

- Round table contributions & questions

Program Planning Update - Michelle Laurie, THEC Lead Facilitator

- Thep.ca website analytics report attached

Partner Meeting Report – **Thea Hanson, Alternate Chair**

2023 THEC MEETING DATES to be confirmed

- January / February
- April
- June
- September
- November / December

THEC meetings are held from 7:00-9:00pm.

Presentations

Children Blood Lead Clinic Results (30 mins)

Presenter: Dr. Karin Goodison, Interior Health Medical Health Officer

- Q&A
- Media Release (Michelle Laurie, THEC Lead Facilitator)

Fugitive Dust Program Update (20 mins)

Presenter: Keith Klimchuk (Teck Trail Operations)

- Q&A

Toddler Development Index and Program Development (15 mins)

Presenter: Heather Glenn-Dergousoff, Julia Stockhausen and Cindy Hall (Family Action Network)

- Q&A

Children Blood Lead Clinic Results

Blood lead levels in Trail
Fall 2022

Dr. Karin Goodison, Medical Health Officer
Dec 1, 2022

The slide features a dark blue background with a stylized white graphic of a person's arms raised in a circle. Below the title, there is a horizontal bar with segments of blue, cyan, yellow, and red.

1

Land Acknowledgement

We recognize and acknowledge that we are collectively gathered on the traditional, ancestral, and unceded territories of the seven Interior Region First Nations. This region is also home to 15 Chartered Métis Communities. It is with humility that we continue to strengthen our relationships with First Nation, Métis, and Inuit peoples across the Interior.

Blood lead levels in Trail 2

2

Objective

- Overview of blood lead (Pb) levels tested in fall 2022
- Comparison of mean blood Pb levels in 2022 to previous years

Blood Pb levels in Trail 3

3

Who was tested in 2022?

- Children aged 6-36 months, living in City of Trail or Rivervale (Area 2/3)
- Children aged 6-36 months living in Warfield, Oasis, Casino and Waneta (Area 1)



Blood Pb levels in Trail 4

4

Additional Testing

These results do not contribute to the yearly analysis

- Children new to the area, up to the age of 5 years old
- Children with previous enhanced support follow up who are now over 36 months old
- Children whose parents requested testing for their child from outside target area and age range

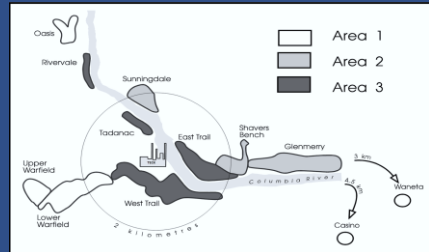


Blood Pb levels in Trail

5

5

"Areas" and Neighbourhoods



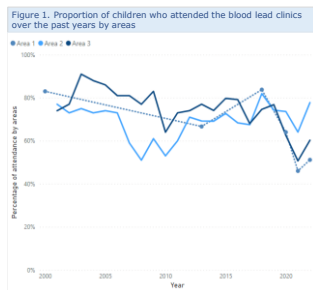
Blood Pb levels in Trail

6

6

Participation By Target Areas (6-36 months old)

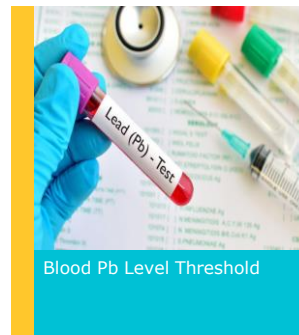
- No. of samples collected in 2022: 106
- No of children participated in 2022: 108



Blood Pb levels in Trail

7

7

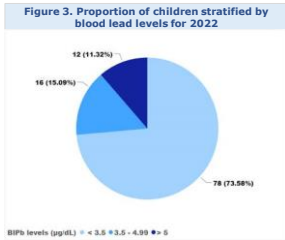


Blood Pb Level Threshold

- There is no safe blood Pb level threshold
- Canadian children 3-5 years old had geometric blood Pb levels at 0.50 µg/dL in 2018/19 ***
 *** note that Trail children's geometric reflects ages 6-36 months, when higher Pb burden is expected
- BCCDC uses 5µg/dL as exposure investigation levels (EILs) for children (aged 0-18 years), and women aged 19-49.
- In BC, blood Pb levels that meet or exceed the defined EILs will prompt further follow up by public health agencies.

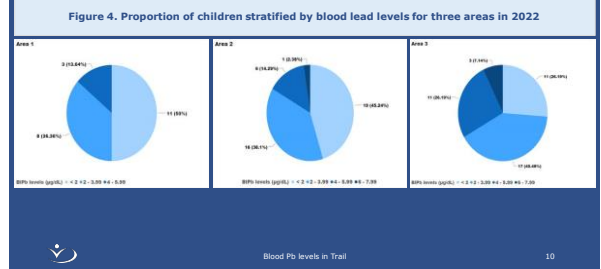
8

Range of Blood Pb Levels



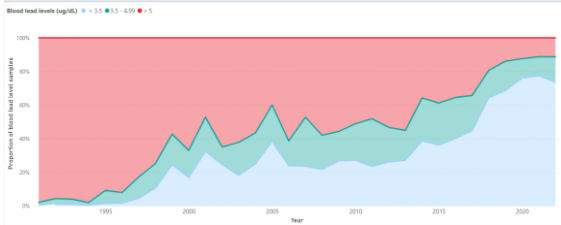
9

Blood Pb levels



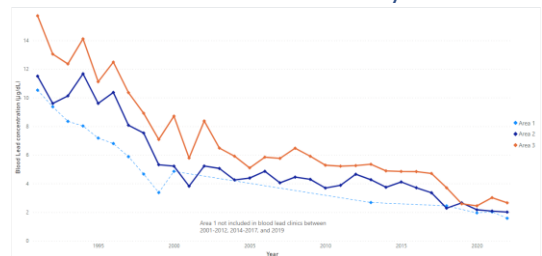
10

Figure 5. Proportion blood Pb samples collected over the years for all areas by blood lead level concentrations



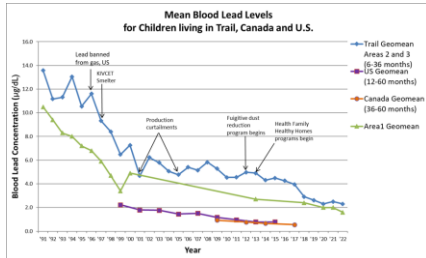
11

Trend of Blood Pb Geomean by Area



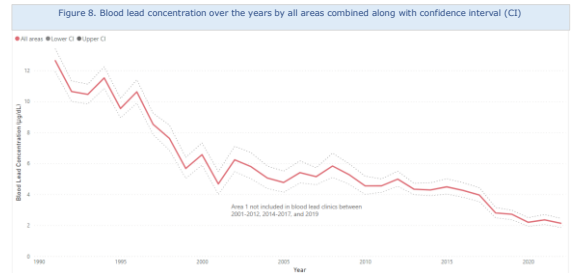
12

Blood Pb Levels in Trail, Canada & U.S. Data



13

13



14

14

Concluding messages

- In 2022, participation in BL clinics increased for all areas, with area 2 returning to almost 80%. While areas 3 and 1 have increased relative to 2021, they are notably lower than previous years.
- The blood lead geometric mean was 2.3 for areas 2 & 3. It was 2.1 for all areas. These are lower than 2021 means of 2.5 and 2.4 (2.35) respectively.
- The mean blood lead levels continue to demonstrate evidence of exposure to lead in the environment. 11% of children tested have blood lead values of 5 or greater, but no value was greater than 8.
- A slight to moderate decrease was seen in blood lead levels in all areas in 2022 vs 2021.



15

15

Thank you



16

16

Fugitive Dust Program Update

Teck Trail Operations Fugitive Dust Update

December 1, 2022



1

Overview

Background

Progress to date

Current fugitive dust reduction initiatives

- Wind controls: engineering and studies
- Revisiting material movement at site
- New monitoring station

Teck

2 /

2

What is fugitive dust ?

Fugitive dust is dust that escapes from stockpiles, open handling of materials, buildings and vehicle traffic on and offsite. Fugitive dust is not stack emissions.

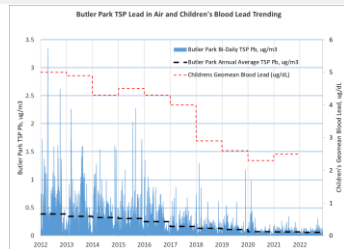


Teck

3 /

3

Fugitive lead emissions reduction, Progress to date



Teck

4 /

4

Current fugitive dust reduction initiatives

Wind controls
On-site material movement review
New monitoring station

Teck

/5

5

Wind controls: engineering and studies

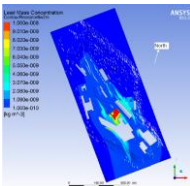


Teck

6

Wind controls: studies Model results (subject to validation)

- Base case (current wind fence only)**
- Lead concentrations at 2 m elevation
 - Wind: NW toward Downtown Trail,
 - 1.1 m/s, stability D

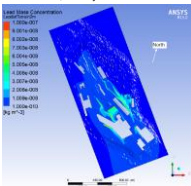


Teck

/

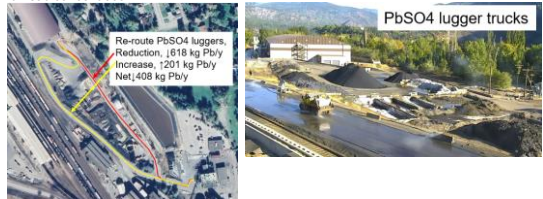
7

- All wind fences considered (entire site)**
- Lead concentrations at 2 m elevation
 - Wind: NW toward Downtown Trail,
 - 1.1 m/s, stability D



On-site material movement review

The estimate for road dust lead emissions is related to traffic count, vehicle avg. weight, vehicle speed, distance traveled, mass of total suspended particulate on the road surface, and Lead concentration.



Teck

/8

8

New monitoring station at Haley Park



Teck

/9

9

New monitoring station at Haley Park



Teck

/10

10

Toddler Development Index and Program Development

FAN
Family Action Network

Update to the THEC

Toddler Development Instrument Pilot Project
December 1, 2022
Presented by Cindy Hall and Julia Stockhausen

1

“best place to raise a family”

2

HUMAN EARLY LEARNING PARTNERSHIP

HELP Monitoring System

TDI Toddler Development Instrument
CHEQ Child Health Experience Questionnaire
EDI Early Development Instrument
MDI Middle Years Development Instrument
YDI Youth Development Instrument

3

Toddler Development Instrument (TDI) Pilot Project

4

TDI Key Findings

- Screen time
- Dental health
- Nutrition concerns
- Childcare



5

Moving from Data to Action

Three and Thriving Parent Cafés

- A safe space for parents
- One series of 6 cafés
- Conversation in a focused way

The parenting cafes are great! I wanted to thank you and to say that this was the highlight of my summer and something I look forward every week.



6

“helping families and children thrive”

- Developmental screening
- 1-800 Family navigation service
- Family friendly events
- Easy Peezy washroom
- Online “HUB”
- Quarterly newsletter
- Service provider networking



7

Thank you!

For more information:

- www.familyactionnetwork.ca
- coordinator@familyactionnetwork.ca
- 250-231-9995, Heather Glenn, FAN Executive Director
- [Early Development Instrument \(EDI\) - Human Early Learning Partnership \(ubc.ca\)](#)

8

Program Reports

Air Quality Report



Air Quality Report

December 1, 2022

1. Lead in Air:

Averages for lead in air continue to be at historical lows; third quarter 2022 average for lead in air at Butler Park and Birchbank stations were $0.084 \mu\text{g}/\text{m}^3$ and $0.019 \mu\text{g}/\text{m}^3$, respectively.

As seen in the monthly averages in Figure 2, month to month variability in ambient levels remains relatively low, but the influence of weather including dominant wind direction and precipitation, can be seen in the data.

Figure 3 presents the 3-month rolling average for lead in air measured at the Butler Park station compared to the US EPA standard of $0.15 \mu\text{g}/\text{m}^3$ (Federal and BC Provincial governments do not have ambient air quality objectives or standards for lead; however, it is reasonable to rely on standards from other jurisdictions when this is the case). Lead in air levels measured at Butler Park and Birchbank meet the US EPA standard of $0.15 \mu\text{g}/\text{m}^3$ on a 3-month average.

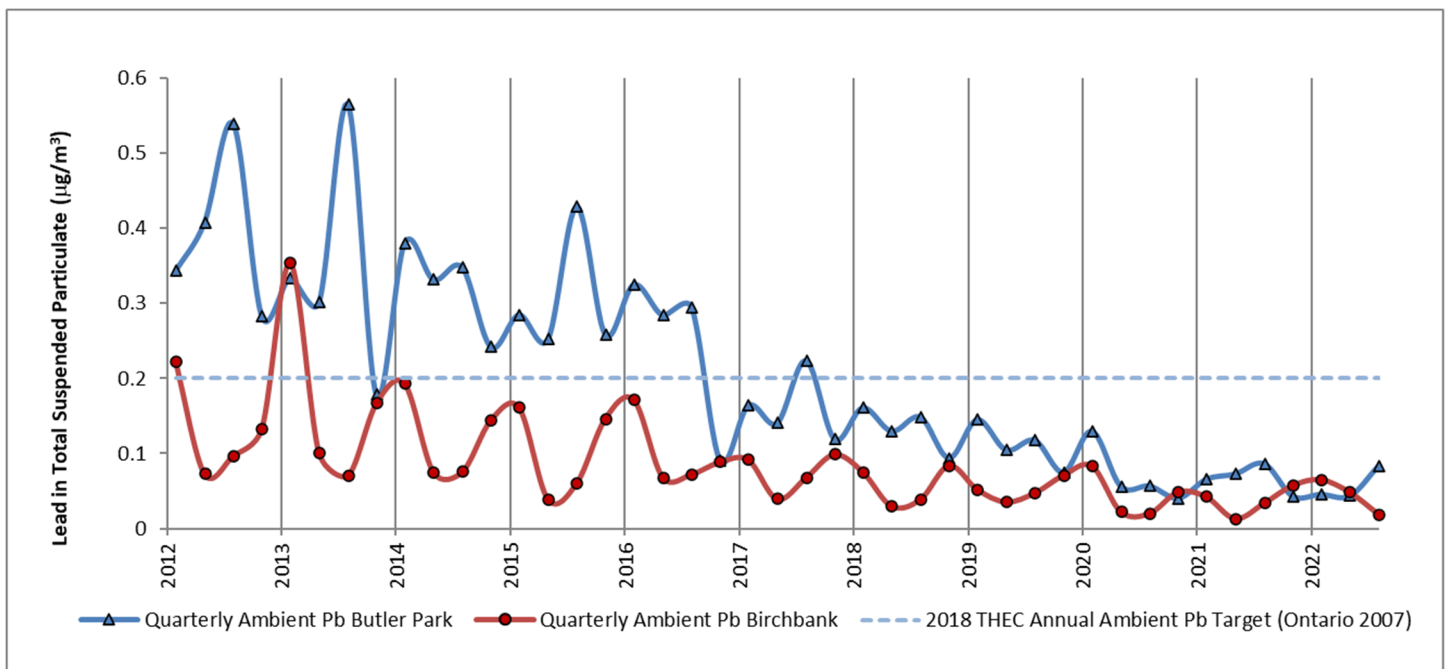


Figure 1: Quarterly monthly average lead at Butler Park and Birchbank stations (as total suspended particulate measured bi-daily)

The chart in Figure 1 shows quarterly averages for Lead in air for Butler Park (dark blue) and Birchbank (red), in comparison to the 2018 THEC Annual Ambient Lead in Air Objective (dashed line).

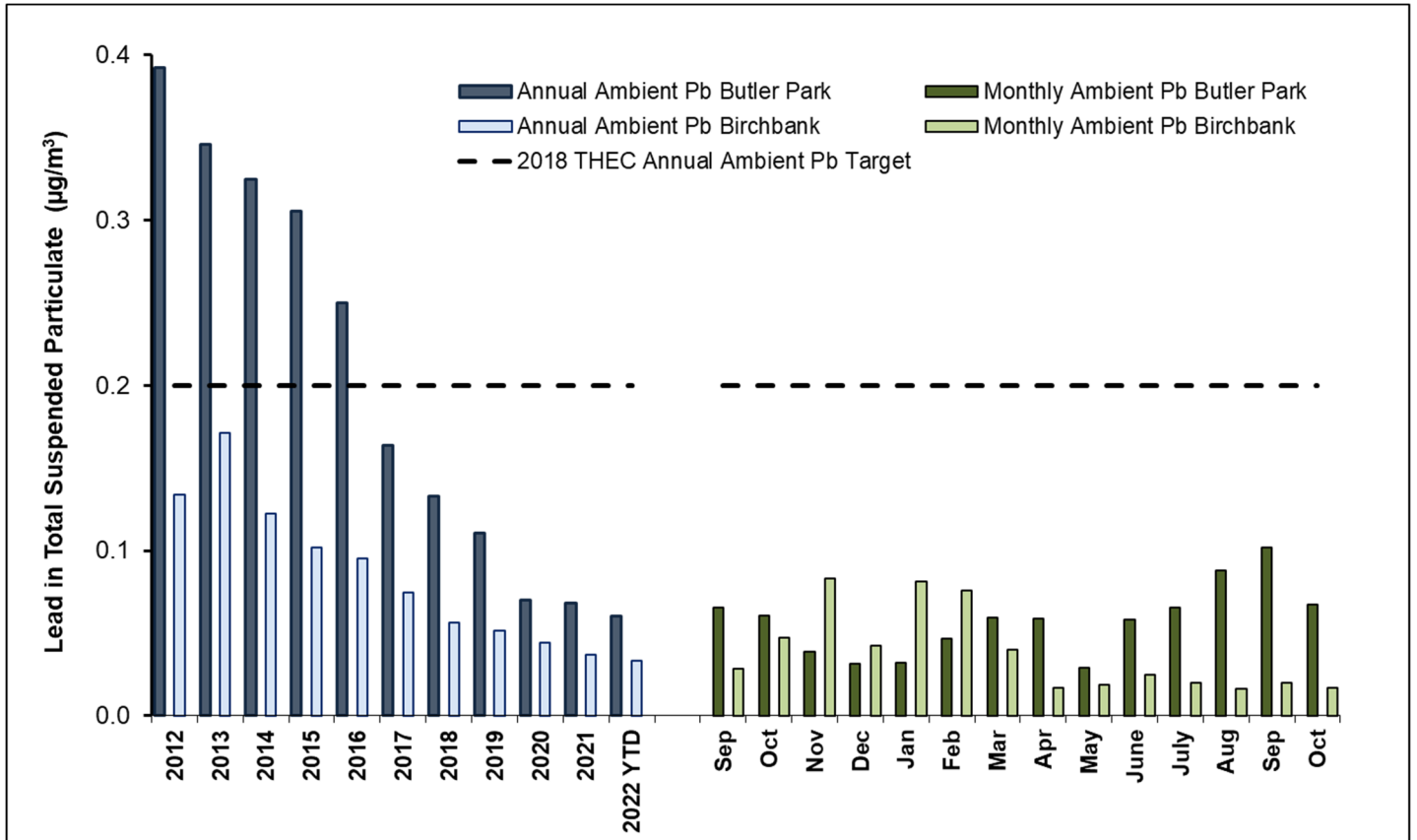


Figure 2: Annual and monthly average lead at Butler Park and Birchbank stations (as total suspended particulate measured bi-daily)

The chart in Figure 2 shows annual and monthly averages for Lead in air for Butler Park. Annual averages are shown on the left for Butler Park (dark blue) and Birchbank (light blue). Monthly averages for the past year are shown on the right for Butler Park (dark green) and Birchbank (light green). The 2018 THEC Annual Ambient Lead in Air Target is shown as a dashed line. Monthly averages for Lead in ambient air are expected to have some variability due to season, weather, predominant wind direction and operational variance.

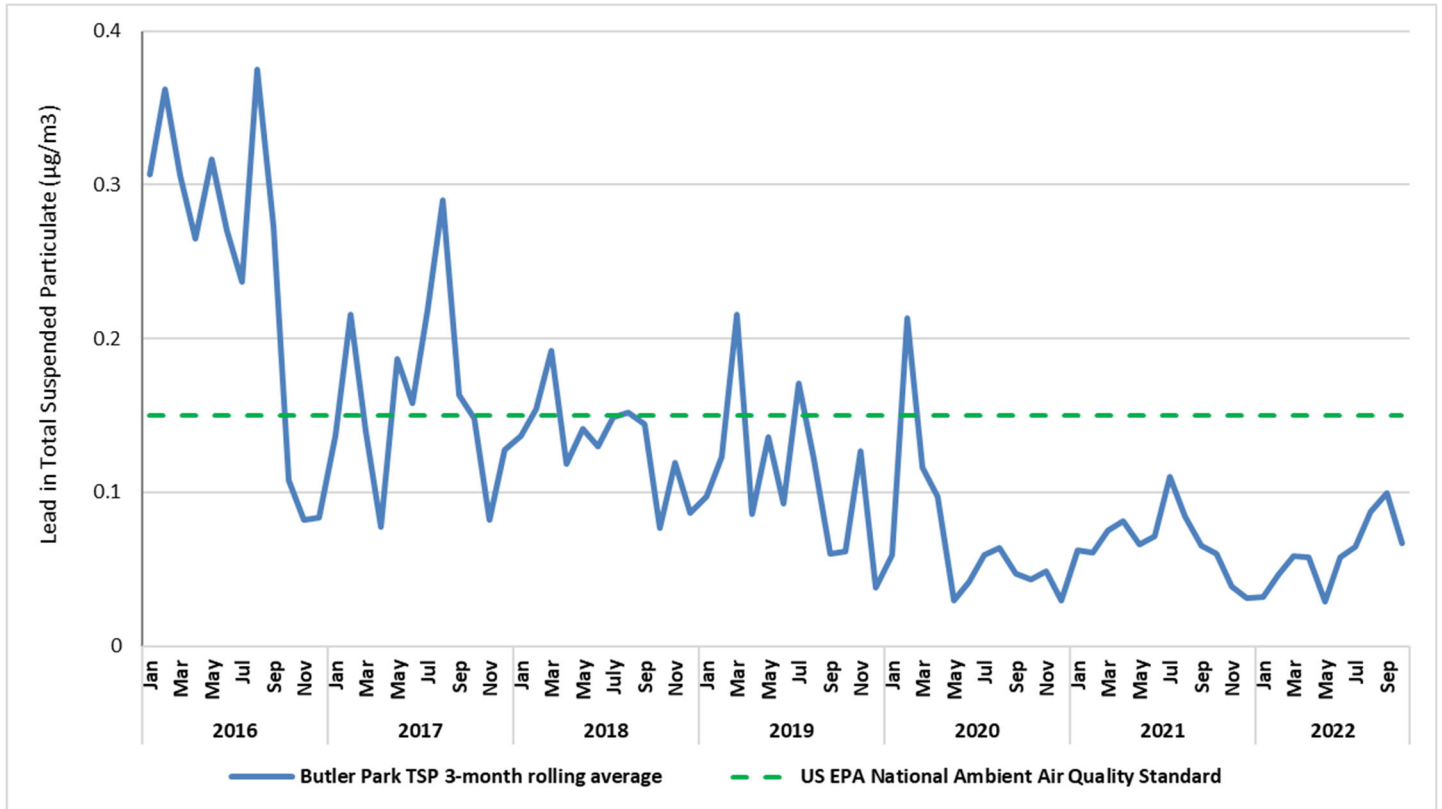


Figure 3: 3-month rolling average lead in air at Butler Park station (as total suspended particulate measured bi-daily)

The chart in Figure 3 shows the 3-month rolling average for lead in air for Butler Park (blue line), in comparison to the US EPA standard (green dashed line).

2. Arsenic in Air:

Averages for arsenic in air continue to be at historical lows. Third quarter 2022 arsenic in air at Butler Park and Birchbank were $0.001 \mu\text{g}/\text{m}^3$ and $0.003 \mu\text{g}/\text{m}^3$, respectively.

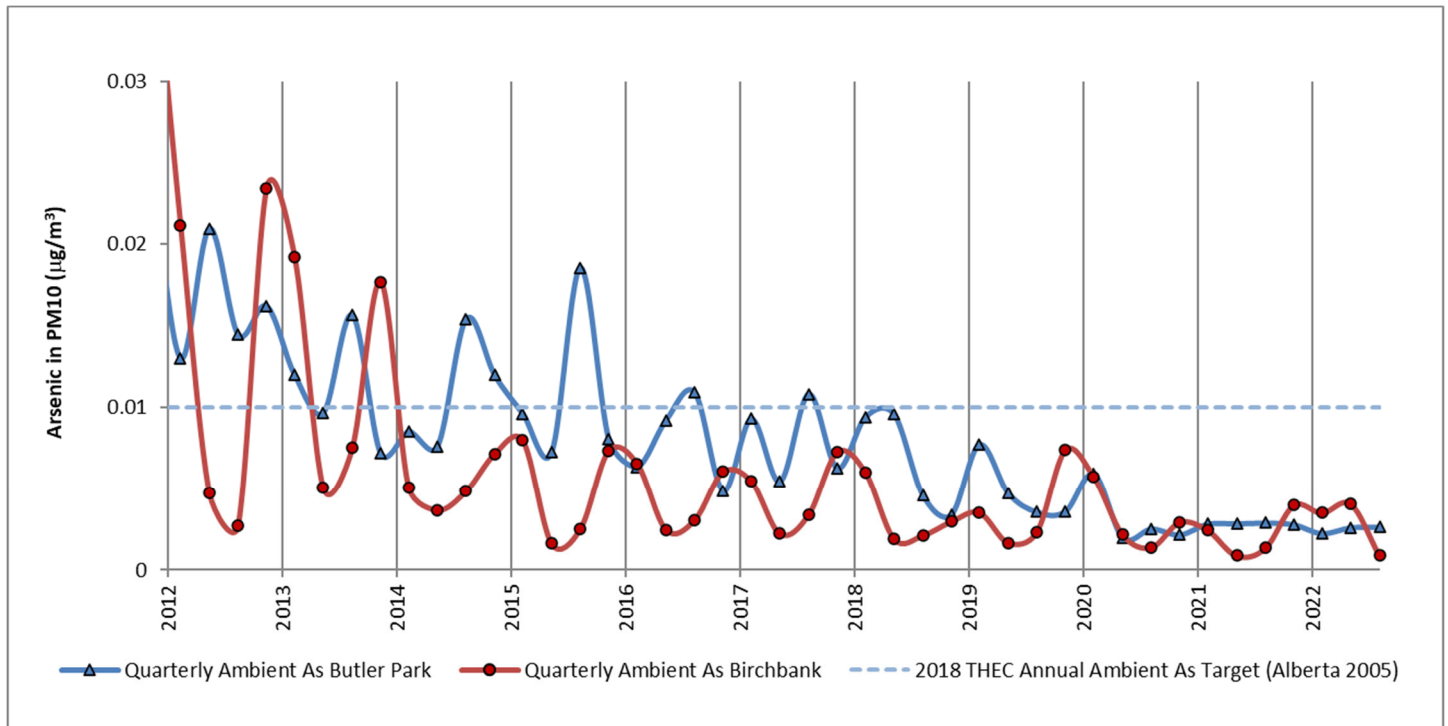


Figure 4: Quarterly average arsenic at Butler Park and Birchbank stations (as inhalable PM₁₀ fraction measured weekly)

The chart in Figure 4 shows the annual average for Arsenic in air (measured as inhalable PM₁₀ fraction) at Butler Park (blue) and Birchbank (red) in comparison to the 2018 THEC Air Quality Objective (blue line).

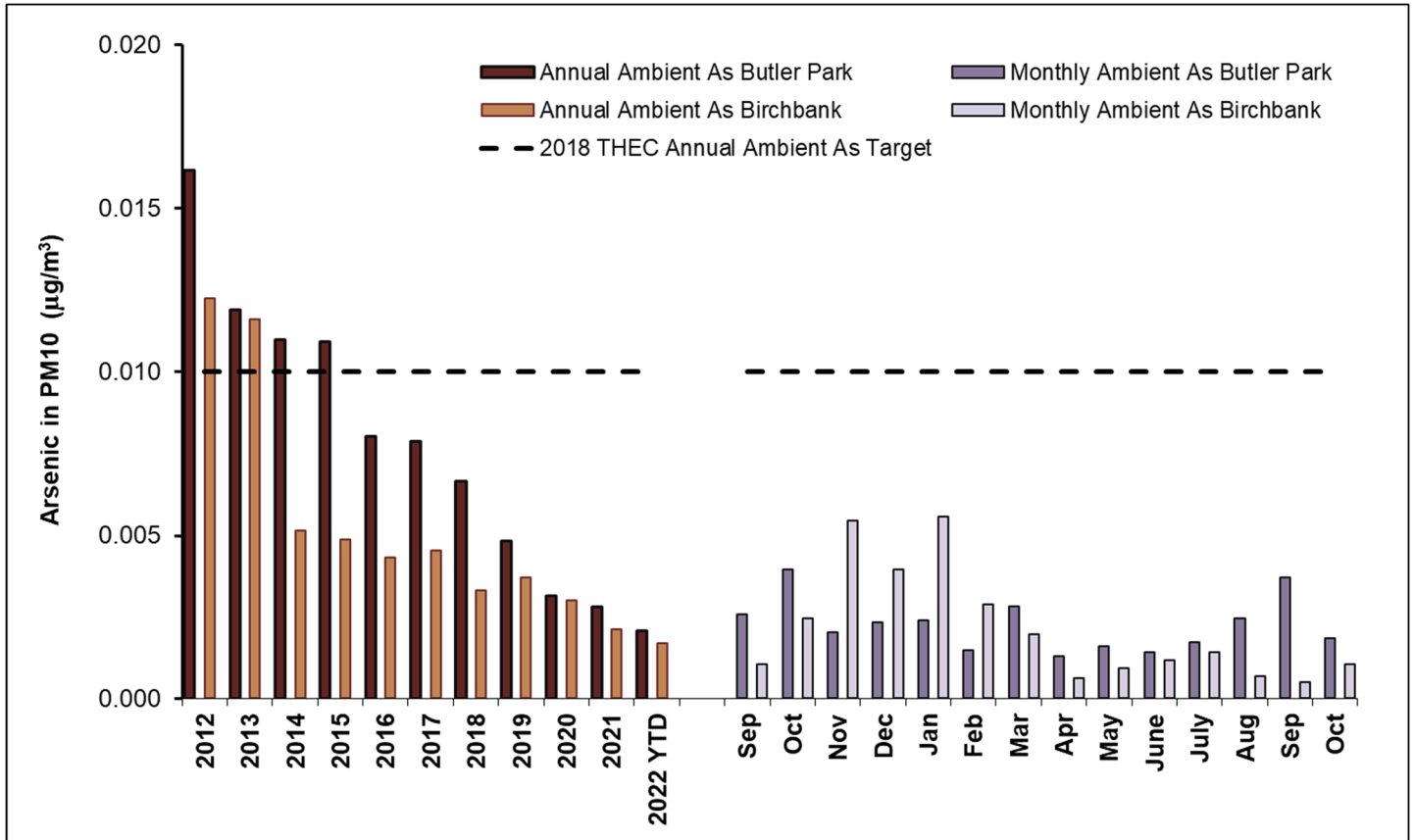


Figure 5: Annual and monthly average arsenic at Butler Park and Birchbank stations (as inhalable PM10 fraction measured weekly)

The chart in Figure 5 shows annual and monthly averages for Arsenic in air at Butler Park and Birchbank. Annual averages are shown on the left for Butler Park (dark brown) and Birchbank (light brown). Monthly averages for the past year are shown on the right for Butler Park (dark purple) and Birchbank (light purple). The 2018 THEC Air Quality Arsenic in Air Target is shown as a dashed line. Monthly averages for Arsenic in ambient air are expected to have some variability due to season, weather, predominant wind direction, operational variance and sampling frequency.

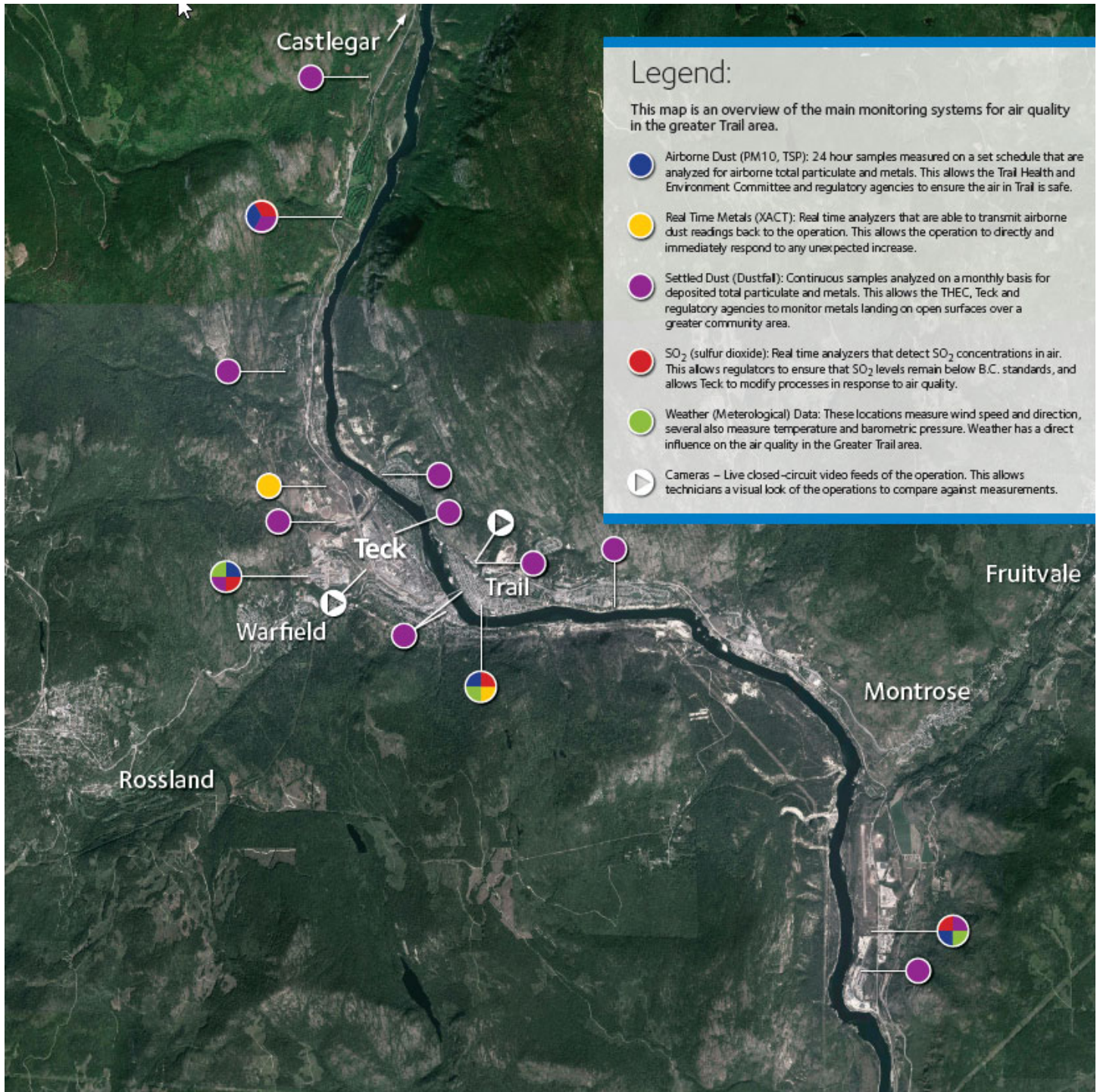


Figure 6: Teck Community Air Monitoring Stations

Family Health Report



FAMILY HEALTH REPORT

Dec 1, 2022

RECENT HIGHLIGHTS

1. Fall 2022 Blood Lead Clinic Results
2. Healthy Family Visits
3. Community Outreach
4. Winter 2023 Blood Lead Clinics

ADDITIONAL DETAILS

1. Fall 2022 Blood Lead Clinic Results
 - Geomean for Areas 2&3 to be presented by MHO Dec 1st at THEC meeting.
 - Participation returning to pre-pandemic levels
 - Support initiated for all children at or above Enhanced Support threshold of 5ug/dL.
2. Healthy Family Visits
 - 63 Healthy Family visits completed in 2022, either in person at Kiro Wellness Centre or Home Visit
 - 7 Healthy Family Visits declined in 2022
3. Community Outreach
 - Meghan is attending Building Beautiful Babies monthly
 - Cecilee is attending Muffins and Munchkins monthly
 - Meghan attended Greater Trail Early Years Table Meeting in October
4. Winter 2023 Blood Lead Clinics
 - Early Planning Stages for February 2023 Blood Lead Clinic. Two clinic days will be offered. One day will have early evening hours.

Home & Garden Report

Highlights - December 1, 2022

1. Soil Management Program:

- a. Soil Assessment – 165 properties sampled, with 9 in the queue for 2023.
 - i. 58 Properties with Children;
 - ii. 103 Non-child occupied Community Properties (CP); and
 - iii. 4 Vegetable Gardens.
- b. Yard Improvement – 14 properties had lawn care, 22 properties received improvement including soil pickup or delivery, mulch cover, etc.
- c. Soil Replacement – 78 yards and 4 vegetable gardens had soil replacement.
 - i. 75 Full Soil Replacement (53 P1, 3 P2, 5 P3, 14 CP – 7 adjacent, 7 project support)
 - ii. 3 Partial Soil Replacement (2 P1, 1 CP)
 - iii. 4 Vegetable gardens (4 CP)
- d. Soil Management at 4 properties part of the Property Development Program

Healthy Homes:

- a. Healthy Homes - 53 home visits have been completed this year.
- b. Enhanced supports
 - i. All families referred by IH have received some level of follow-up (e.g., visits, material supports, house cleaning).
 - ii. Residential Lead Inspection (RLI) - 3 properties completed (note: 1 declined, 1 to be scheduled). Follow-up dust sampling will be offered at 7 residences where past RLI's have already been conducted.

2. Lead Safe Renovation:

- a. Since the last THEC meeting, 4 residents have accessed the Lead Safe Renovation Program for supplies, bringing the yearly total to 51. There's been an increase of referrals from realtors!
- b. LSR supply shortages are unchanged but to avoid long waits all supplies are now stocked at the Community Program Office.

3. Outreach and Engagement:

- a. Our staff continue to offer co-facilitation the Three and Thriving Conversation Café in support of the Family Action Network when requested.
- b. Looking for outreach and event opportunities for 2023.

Program Planning Update

(thep.ca analytic report)

THEP Website Analytics

Reporting Period: October 1 2021 to September 30 2022

Key Dates for THEP Website Activities

Spring:	Soil testing sign up
September:	Blood Lead Clinic
November (end):	Release of blood lead report for the year

Top THEP Pages

By Number of Users

Page Title	# of Users	Views per User
Trail Area Health & Environment Program Welcome to THE Program	2029	1.9
Soil Management Program Trail Area Health & Environment Program	435	1.4
FAQs Trail Area Health & Environment Program	410	1.4
Form Consent to Access Property for Residential Soil Assessment Trail Area Health & Environment Program	376	1.8
About the Program Trail Area Health & Environment Program	219	1.5
Family Health Trail Area Health & Environment Program	150	1.6
Contact Trail Area Health & Environment Program	145	1.3
Air Quality Program: Lead (Pb) Trail Area Health & Environment Program	144	1.8
Air Quality Trail Area Health & Environment Program	143	2.1
Thank you for your request Trail Area Health & Environment Program	141	1.2

THEP Website Analytics

Reporting Period: October 1 2021 to September 30 2022

What Are Users Viewing?

Blood Lead Report

There were a small numbers of users viewing historic Blood Lead Reports, with 33 users viewing the 2021 Blood Lead Report.

Page Title	# of Users	Views per User
Fall 2007 Blood Lead Report Trail Area Health & Environment Program	2	4.5
Fall 2009 Blood Lead Report Trail Area Health & Environment Program	2	2.5
Fall 2010 Blood Lead Report Trail Area Health & Environment Program	1	1.0
Fall 2011 Blood Lead Report Trail Area Health & Environment Program	2	2.0
Fall 2012 Blood Lead Report Trail Area Health & Environment Program	2	3.0
Fall 2013 Blood Lead Results Trail Area Health & Environment Program	3	2.3
Fall 2014 Blood Lead Report Trail Area Health & Environment Program	4	2.3
Fall 2015 Blood Lead Report Trail Area Health & Environment Program	2	2.0
Fall 2016 Blood Lead Report Trail Area Health & Environment Program	2	1.0
Fall 2017 Blood Lead Report Trail Area Health & Environment Program	4	1.5
Fall 2018 Blood Lead Report Trail Area Health & Environment Program	3	2.0
Fall 2019 Blood Lead Report Trail Area Health & Environment Program	3	1.0
Fall 2020 Blood Lead Report Trail Area Health & Environment Program	3	1.3
Fall 2021 Blood Lead Report Trail Area Health & Environment Program	33	1.5

Forms

Significant number of users are filling in forms on the THEP website. The most popular forms are for consent to access property for Residential Soil Assessment, Lead Safe Renovation online registration, booking a home visit, and contacting Wendy.

Page Title	# of Users	Views per User
Form Consent to Access Property for Residential Soil Assessment Trail Area Health & Environment Program	376	1.8
Form Lead Safe Renovation Online Registration Trail Area Health & Environment Program	89	2.3
Form Book a Home Visit Trail Area Health & Environment Program	58	1.4
Form Contact Wendy Trail Area Health & Environment Program	31	1.3
Form Consent to access property for residential soil remediation and/or yard improvement work Trail Area Health & Environment Program	1	2.0
Form Yard improvement services access consent Trail Area Health & Environment Program	1	2.0

Media Releases

THEP Website Analytics

Reporting Period: October 1 2021 to September 30 2022

A small number of users (2-3 people) read old media releases from 2014, and 2017-2019. Considerably more users read media releases from between 2020 to 2021, as follows:

Page Title	# of Users	Views per User
Media Release “2014 THEC Renews Collaboration Trail Area Health & Environment Program	3	1.0
Media Release “2017 Children’s Lead Levels are the Lowest to Date Trail Area Health & Environment Program	3	1.0
Media Release “2018 Children’s Lead Levels are the Lowest to Date Trail Area Health & Environment Program	2	1.0
Media Release “2019 Children’s Blood Lead Testing Trail Area Health & Environment Program	2	1.0
Media Release “2020 Children’s Lead Levels are the Lowest to Date Trail Area Health & Environment Program	14	1.1
Media Release “Children’s Blood Lead Testing Clinics Confirmed for September 2020 Trail Area Health & Environment Program	1	1.0
Media Release “2021 Children’s Lead Levels Remain Similar to Last Year Trail Area Health & Environment Program	35	1.1
Media Release “Trail Area Health & Environment Program Leading the Way! Trail Area Health & Environment Program [date unknown]	17	1.2

Newsletter

A small number of users read past newsletters, with more users reading current newsletters. Due to the reporting period ending September 30th, it is possible that a higher number of users viewed the Fall 2022 newsletter, after the reporting period.

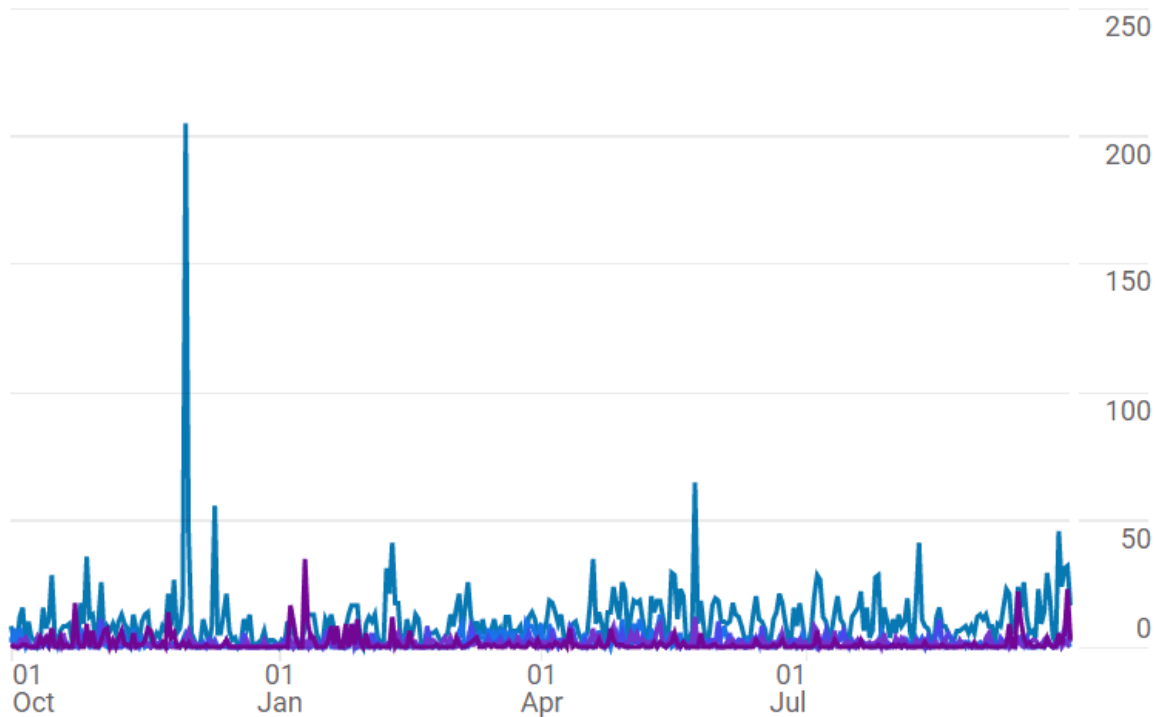
Page Title	# of Users	Views per User
Spring/Summer 2017 Newsletter Trail Area Health & Environment Program	3	2.0
Fall 2018 Newsletter Trail Area Health & Environment Program	4	1.8
Spring 2019 Newsletter Trail Area Health & Environment Program	3	1.3
Fall 2019 Newsletter Trail Area Health & Environment Program	6	1.0
Spring 2020 Newsletter Trail Area Health & Environment Program	19	1.2
Fall 2020 Newsletter Trail Area Health & Environment Program	11	1.4
Spring 2021 Newsletter Trail Area Health & Environment Program	17	1.7
Fall 2021 Newsletter Trail Area Health & Environment Program	46	1.2
Spring 2022 Newsletter Trail Area Health & Environment Program	84	1.4
Fall 2022 Newsletter Trail Area Health & Environment Program	13	1.8

How and When People Came to the THEP Site

THEP Website Analytics

Reporting Period: October 1 2021 to September 30 2022

There were significant increases in traffic to the THEP website in November/December and June, and slight increases in January, February and March, August and September.



Regardless of whether users came to the THEP site from a link or a search, they generally spent almost a minute or more on the website.

Session default channel group ▾ +	Users	↓ Sessions	Engaged sessions	Average engagement time per session
	3,533 100% of total	5,611 100% of total	2,480 100% of total	1m 04s Avg 0%
1 Organic Search	1,670	2,616	1,403	1m 23s
2 Direct	1,657	2,478	929	0m 47s
3 Referral	79	177	92	1m 29s
4 Organic Social	119	131	61	0m 41s
5 Unassigned	73	84	0	0m 31s

THEP Website Analytics

Reporting Period: October 1 2021 to September 30 2022

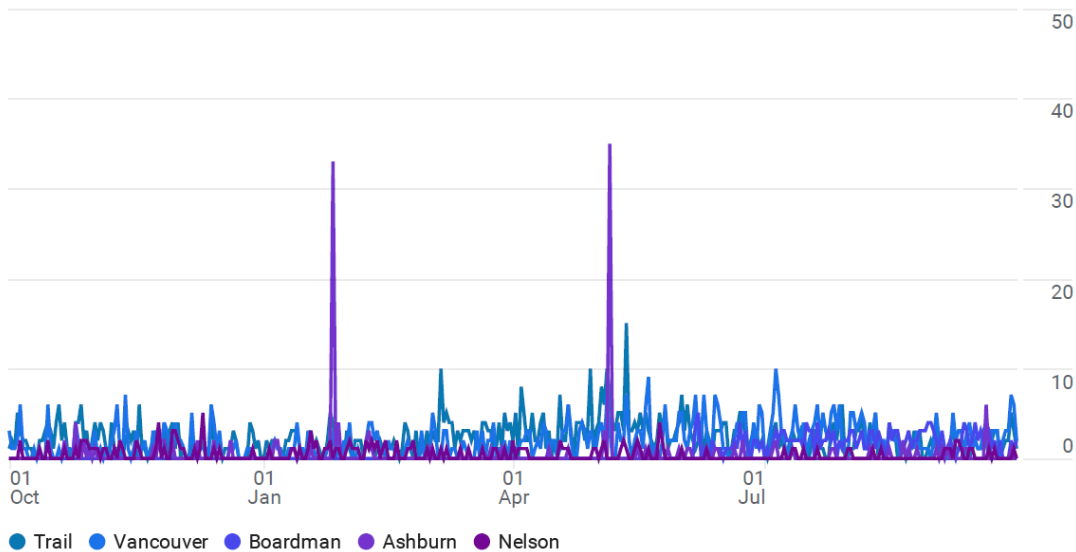
Who is visiting the THEP site?

Most users visiting the THEP website were from Trail or Vancouver. Users from the Trail region also used the site, including people located in Kelowna, Sparwood and Castlegar. There were also some users from Toronto.

Users in Ashburn were generally only engaged in March and May, and did not spend time on the site, indicating that perhaps they were linked from a specific group or event which may not be relevant to them. This could be explored further to remove any inappropriate links.

While there was a relatively high number of users from Boardman, Ashburn, and Columbus, they did not spend time on the website.

Users by Town/City over time



Town/City	Users	New users	Engaged sessions	Engagement rate	Engaged sessions per user	Average engagement time
	3,533 100% of total	3,461 100% of total	2,480 100% of total	44.51% Avg 0%	0.70 Avg 0%	1m 41s Avg 0%
1 Trail	588	541	549	54.04%	0.93	3m 16s
2 Vancouver	437	374	538	57.97%	1.23	2m 44s
3 (not set)	374	349	213	44.1%	0.57	1m 14s
4 Boardman	221	221	0	0%	0.00	0m 00s
5 Ashburn	157	155	5	3.18%	0.03	0m 08s
6 Columbus	113	113	0	0%	0.00	0m 00s
7 Kelowna	89	82	106	65.84%	1.19	2m 06s
8 Sparwood	87	80	109	68.99%	1.25	2m 09s
9 Toronto	79	71	36	36%	0.46	0m 55s
10 Castlegar	63	60	40	50.63%	0.63	2m 22s

THEP Website Analytics

Reporting Period: October 1 2021 to September 30 2022

Cities with more than ten users include those listed in the following table, showing the number of users and the average engagement time. Locations that are listed but show that users spent less than ten seconds on the site are in grey.

Town/City	Users	Average engagement time
Trail	588	196.8
Vancouver	437	164.1
(not set)	374	74.1
Boardman	221	0.0
Ashburn	157	8.0
Columbus	113	0.0
Kelowna	89	126.2
Sparwood	87	129.8
Toronto	79	55.7
Castlegar	63	142.0
Calgary	61	71.7
Nelson	61	328.4
Coffeyville	49	0.4
Adelaide	42	274.6
Surrey	41	59.7
Shanghai	36	0.2
Gibsons	35	79.1
Los Angeles	34	18.2
Victoria	25	78.4
Edmonton	24	113.6
Ottawa	24	47.9
Burnaby	23	35.7
Montreal	23	39.3
Prince George	23	101.7
Sydney	23	46.0
Des Moines	21	0.3
Cheyenne	19	0.0
Dublin	19	51.6
Cranbrook	18	223.8
San Antonio	18	0.0
London	17	47.5
Penticton	17	145.9
Grand Forks	16	111.7
New York	16	52.6
Quincy	16	5.6
Abbotsford	14	132.9

THEP Website Analytics

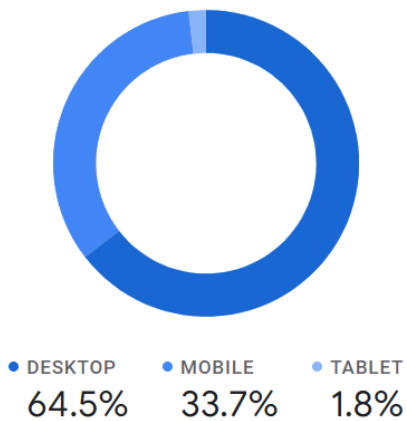
Reporting Period: October 1 2021 to September 30 2022

Vernon	14	123.9
Colwood	13	132.1
Canberra	12	5.8
Coquitlam	12	68.7
Zhengzhou	12	0.0
Nanaimo	11	126.6
Richmond	11	71.0
Taos	10	0.0

Technical Aspects

A majority of users accessed the THEP website from a computer (mainly on windows operating systems). About a third of users visited from a mobile device, with less than 2% of users visiting from a tablet.

Users ▾ by
Device category



THEP Website Analytics

Reporting Period: October 1 2021 to September 30 2022

Users ▼ by Operating system

OPERATING SYSTEM	USERS
Windows	1.6K
iOS	773
Macintosh	657
Android	479
Linux	65
Chrome OS	8
BlackBerry	1