

Has your soil been tested for lead?

All properties are eligible for soil testing.

All THEP community programs are FREE. Sign up online.

Planning a home or yard project? Be lead safe.

Watch videos online, sign up for supplies, and test soil before disturbing.

Do you have a child under 3? Book a home visit.

Get tips and supplies for a healthy family and environment.

## DO YOU HAVE QUESTIONS?

### AIR

Contact Teck's Community and Environment Feedback Line

- > Lead and other smelter metals
- > Sulphur dioxide air quality concerns
- > Air quality monitoring stations

### SOIL

Contact Community Program Office

- > Residential yards and gardens
- > Property development
- > Parks

### HEALTH

Contact THEP's Public Health Nurse

- > Families and caregivers
- > Working in healthcare
- > Residents

### BUILT ENVIRONMENTS

Contact Community Program Office

- > Healthy home and building visits (children under 3)
- > Lead-safe renovation DIY support (all residents)

### Community Program Office



Visit our office  
1319 Bay Avenue



Call  
250.368.3256



Website  
thep.ca



Email  
programs@thep.ca

### Community and Environment Feedback line



Call  
250.364.4817

### THEP's Public Health Nurse



Text  
250.231.5945



**TRAIL AREA**  
Health & Environment Program

Supporting you to live, work and play in an area influenced by smelter air emissions.

AIR  
HEALTH  
SOIL  
BUILT ENVIRONMENTS



## WHY IS LEAD IN TRAIL?

Trail is home to one of the world's largest lead and zinc smelting and refining facilities. Significant operational improvements have been made to reduce emissions. Lead in Trail's community air is below the most stringent standards in North America. Still, lead from smelting activities is present in dust in the community. Historical smelter emissions along with leaded gasoline and lead-based paint have also left legacy lead in the environment.

## KIDS' HEALTH

Lead exists in all communities however there may be more lead in Trail than a town without a lead smelter. Experts agree there is no known safe blood lead level. THEP proactively reduces community exposure to lead as it can have detrimental effects on early childhood development and children's future outcomes.

### YOUNG CHILDREN ARE AT HIGHER RISK FOR LEAD EXPOSURE AND ITS EFFECTS BECAUSE:

Their brains are developing quickly.

They often put their hands and objects in their mouths.

Their bodies absorb lead at a higher rate.

They sometimes swallow non-food items.

We also know that many things in a child's environment impact development. Supporting positive influences such as early childhood initiatives, community engagement and connection are priorities for THEP.

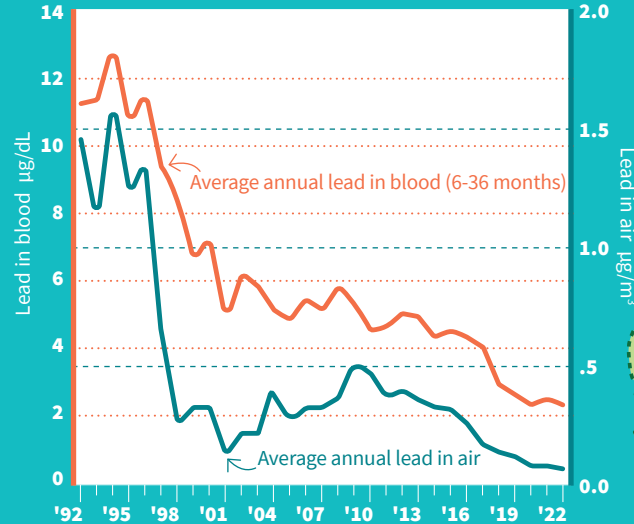


## IMPROVEMENTS IN TRAIL

Since the 1990s, there has been a 99% reduction in emissions of lead and other metals from the smelter stacks. Federal regulations for paint and fuel have also resulted in a reduction in lead in the environment.

Blood lead levels in preschool children have dropped significantly, from an average of 13.5 in 1989 to less than 3 micrograms per decilitre ( $\mu\text{g}/\text{dL}$ ) since 2018.

ANNUAL AVERAGE FOR LEAD IN COMMUNITY AIR AND CHILDREN'S BLOOD (1992–2022, TRAIL, B.C.)



Annual blood lead testing is offered to all children under three in the Trail area. For more than thirty years, it has identified follow up care for anyone that needs it. Monitoring also shows our progress in reducing lead exposure in the community.

## WHERE WE WORK

Since 1991, the Trail Area Health & Environment Program has provided services in Trail and the surrounding areas in priority order.



Read about air quality in Trail. Visit [thep.ca](https://thep.ca)

