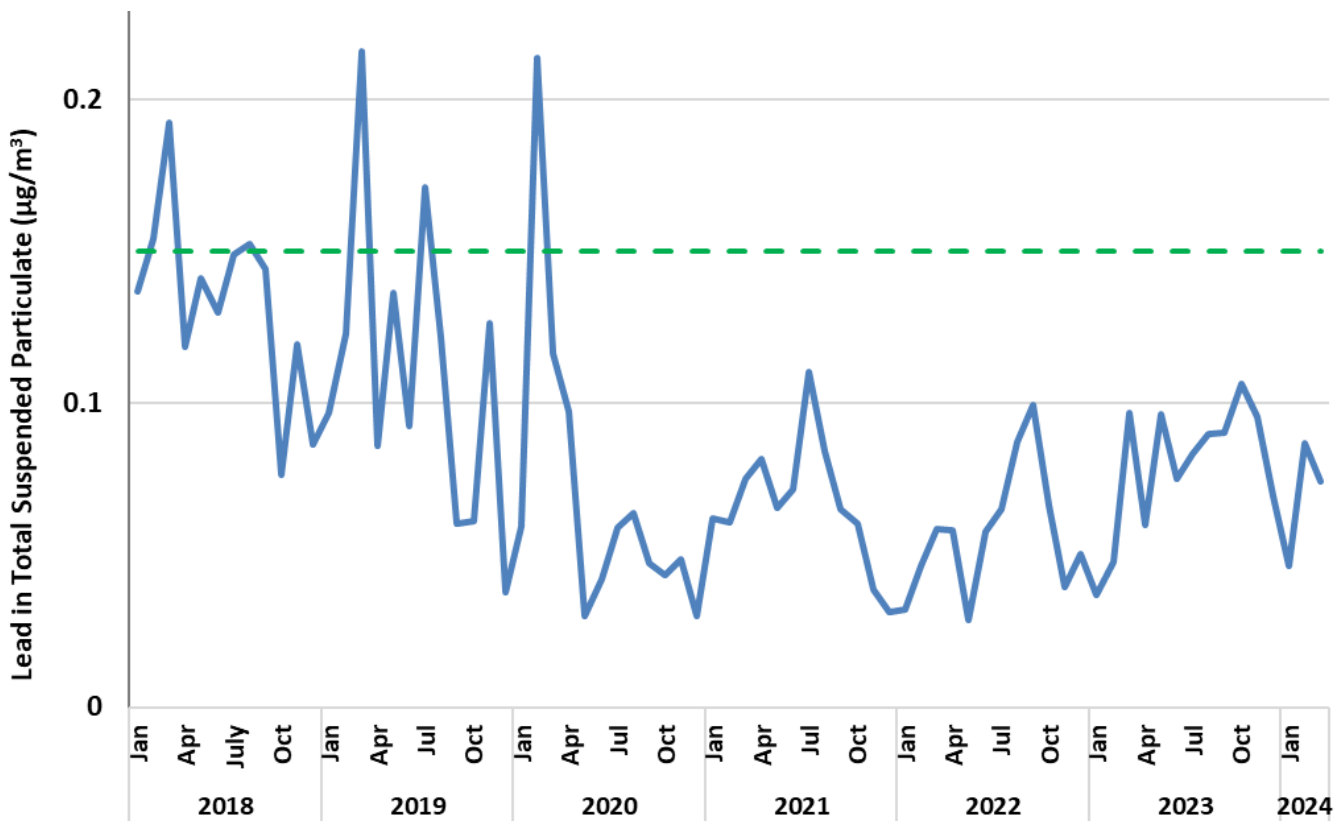


## Air Quality Report – April 2024

### 1. Lead in Air:

Figure 1 presents the 3-month rolling average for lead in air measured at the Butler Park station compared to the US EPA standard of  $0.15 \mu\text{g}/\text{m}^3$ . Federal and BC Provincial governments do not have ambient air quality objectives or standards for lead; however, it is reasonable to rely on standards from other jurisdictions when this is the case.

Lead in air levels measured at Butler Park and Birchbank meet the US EPA standard of  $0.15 \mu\text{g}/\text{m}^3$  on a 3-month average. The intra-annual variability in the data reflects the influence of weather including dominant wind direction and precipitation. Read THEP’s Lead (Pb) [Fact Sheet](#) to learn more.



— Butler Park Pb in TSP 3-month rolling average — US EPA National Ambient Air Quality Standard

**Figure 1: 3-month rolling average lead in air at Butler Park station (as total suspended particulate measured bi-daily)**

The chart in Figure 1 shows the 3-month rolling average for lead in air for Butler Park (blue line), in comparison to the US EPA standard (green dashed line).

## 2. Sulphur Dioxide (SO<sub>2</sub>):

SO<sub>2</sub> is emitted by Teck Trail Operations as a by-product of processing mine concentrates, which contain sulphur, into metal and chemical products. Teck Trail Operations currently captures more than 99% of the sulphur and converts it to by-products, such as fertilizer and sulphuric acid. About 1% leaves the operation through emissions to air. With environmental improvements, SO<sub>2</sub> emissions continue to decline. However, the dispersion of air emissions from the smelter is constrained due to the location of the smelter, weather and the surrounding topography.

SO<sub>2</sub> is monitored by Teck at four locations throughout Trail and the surrounding areas – Birchbank, Butler Park, Columbia Gardens and Warfield. These stations operate continuously, with near real-time data publicly available at <https://www.env.gov.bc.ca/epd/bcairquality/readings/find-stations-map-SO2.html> SO<sub>2</sub> levels fluctuate throughout the day, month and year.

THEP's SO<sub>2</sub> [Fact Sheet](#) provides guidance for actions to take when SO<sub>2</sub> levels are elevated. The chart below provides SO<sub>2</sub> hourly data from Butler Park and Birchbank stations for 2013 – 2023, categorized by the health guidance levels. As Teck Trail Operations continues to implement emissions reductions measures, the percentage of hours within the yellow (35-185 ppb) and red (>185 ppb) categories is decreasing.

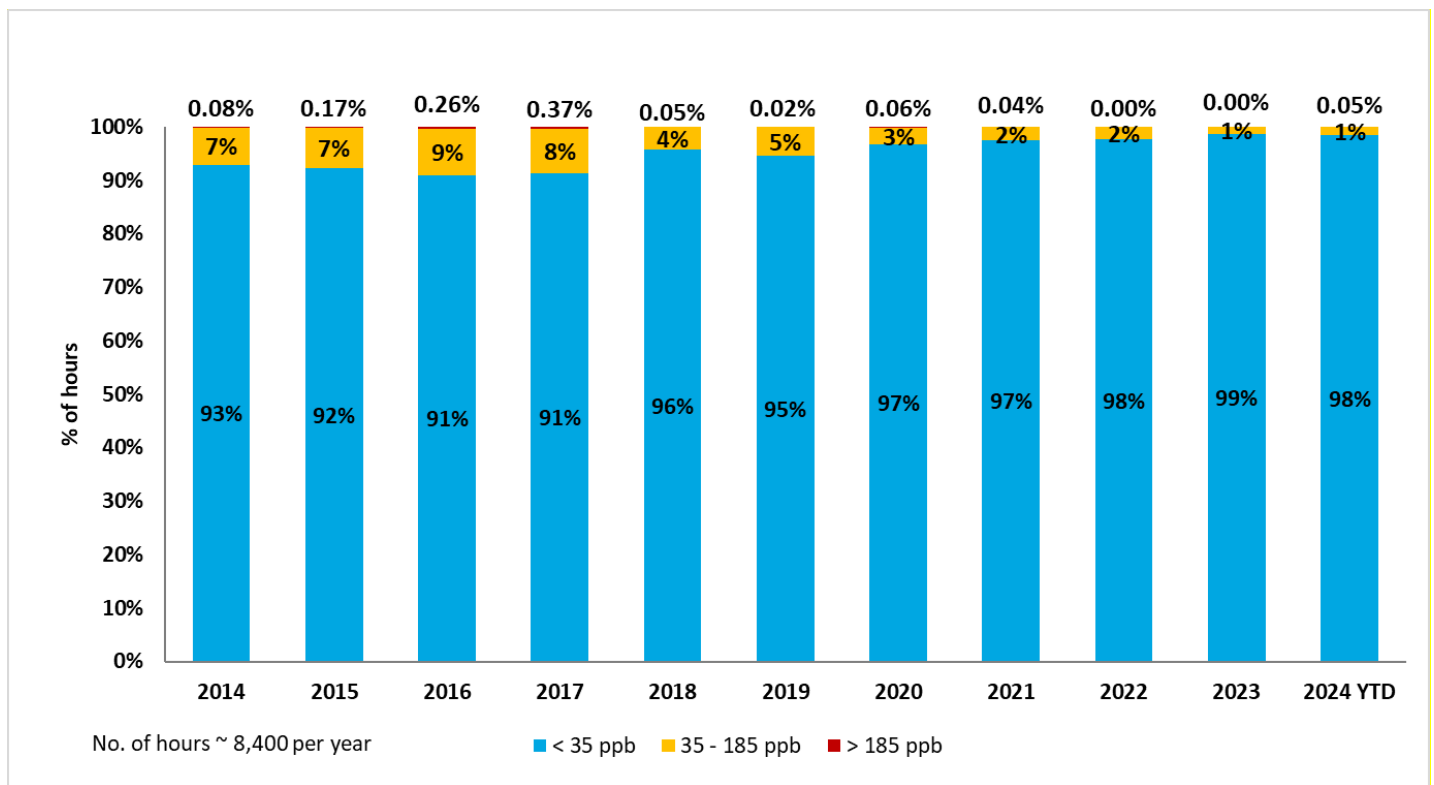


Figure 2: Distribution of Hourly SO<sub>2</sub> Levels at Butler Park

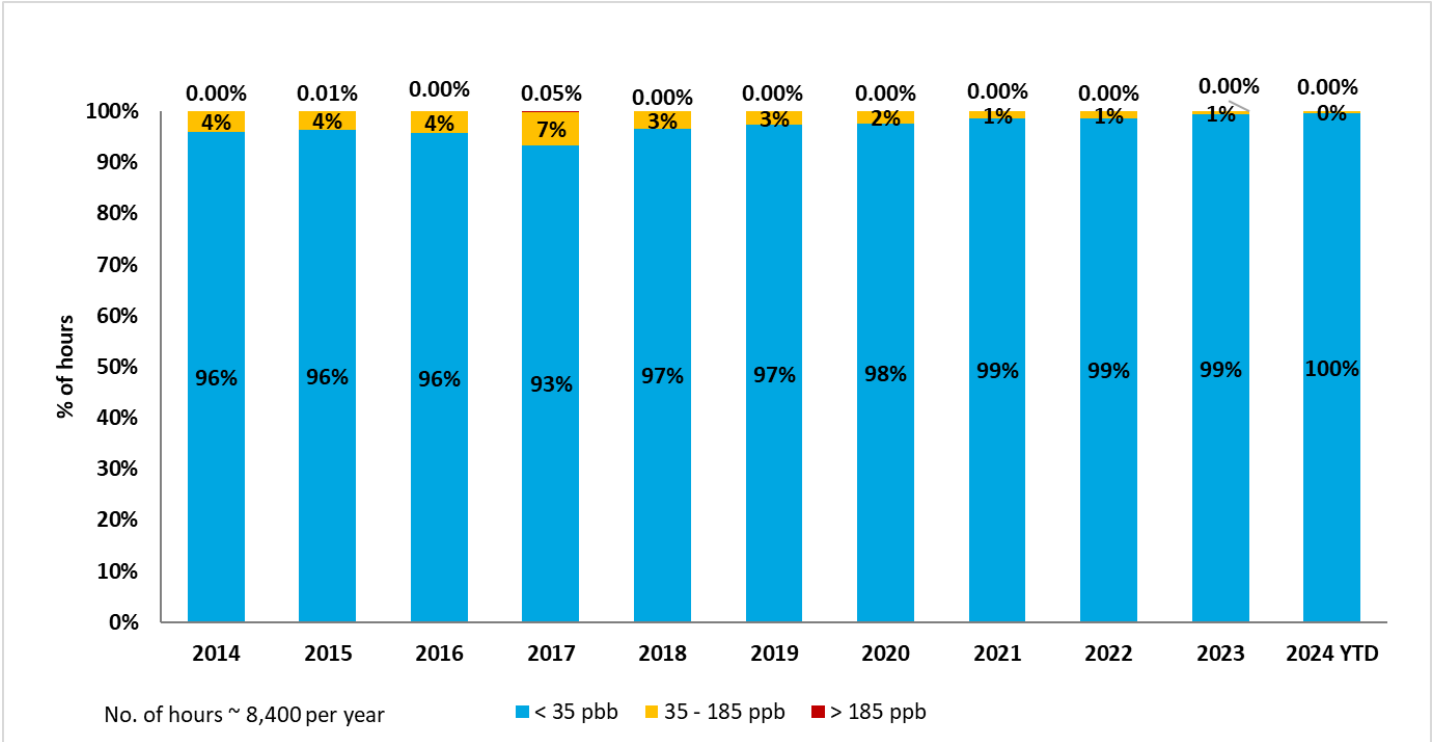


Figure 3: Distribution of Hourly SO<sub>2</sub> Levels at Birchbank

Questions or concerns about Air Quality?  
 Call Teck's Community and Environment Feedback line at (250) 364-4817

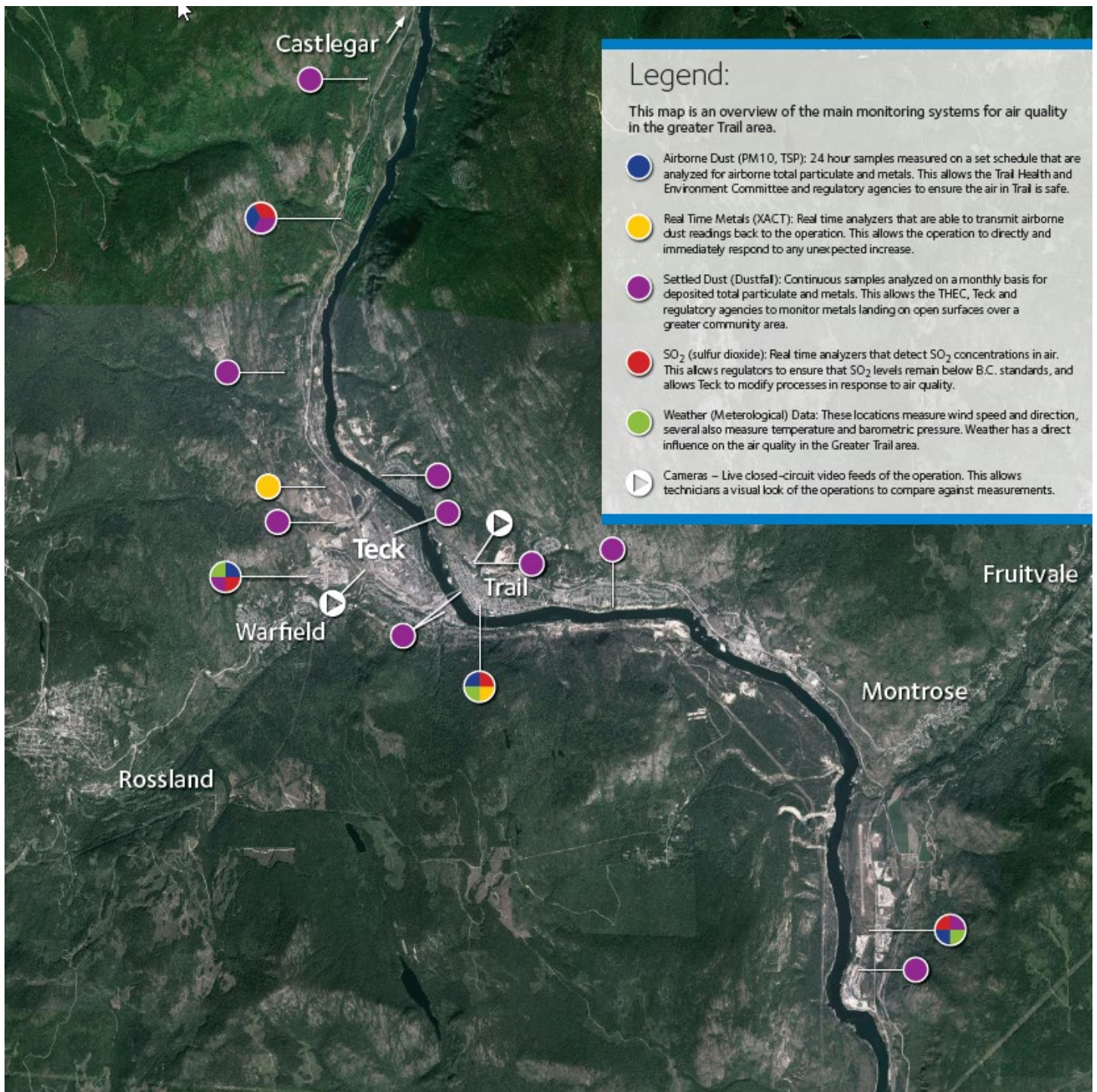


Figure 4: Teck Community Air Monitoring Stations

Questions or concerns about Air Quality?  
 Call Teck's Community and Environment Feedback line at (250) 364-4817