

Air Quality Report

June 17, 2020

1. Lead in Air:

First quarter average for lead in air at Butler Park was $0.129 \mu\text{g}/\text{m}^3$, which is lower than the first quarter in previous years. Second quarter results to date are trending lower with monthly averages for April and May of 0.097 and $0.030 \mu\text{g}/\text{m}^3$, respectively. The low ambient air concentrations in April and May likely reflect increased dust control measures available once freezing conditions are passed (e.g., road washing and operationalizing vehicle rinses) along with a wetter spring.

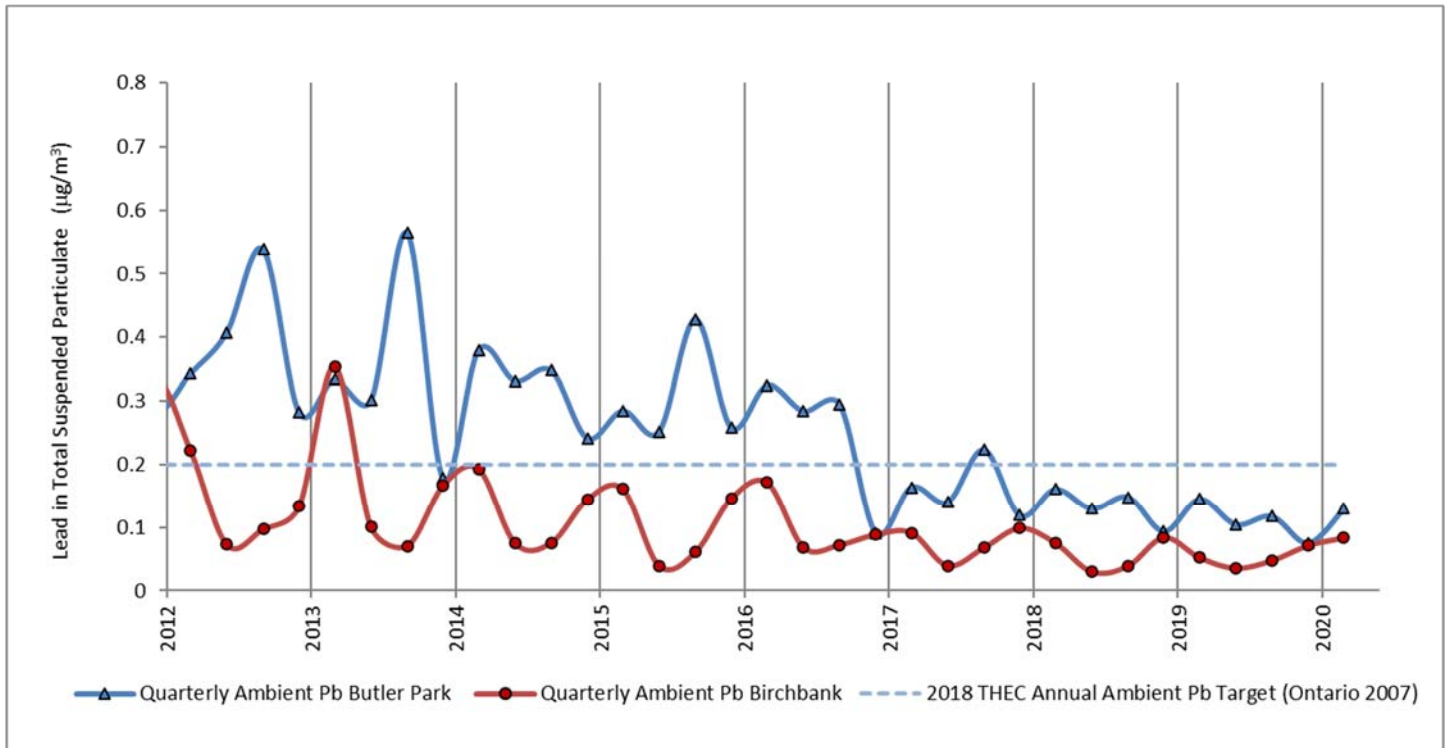


Figure 1: Quarterly monthly average lead at Butler Park and Birchbank stations (as total suspended particulate measured bi-daily)

The chart in Figure 1 shows quarterly averages for Lead in air for Butler Park (dark blue) and Birchbank (red), in comparison to the 2018 THEC Annual Ambient Lead in Air Objective (dashed line).

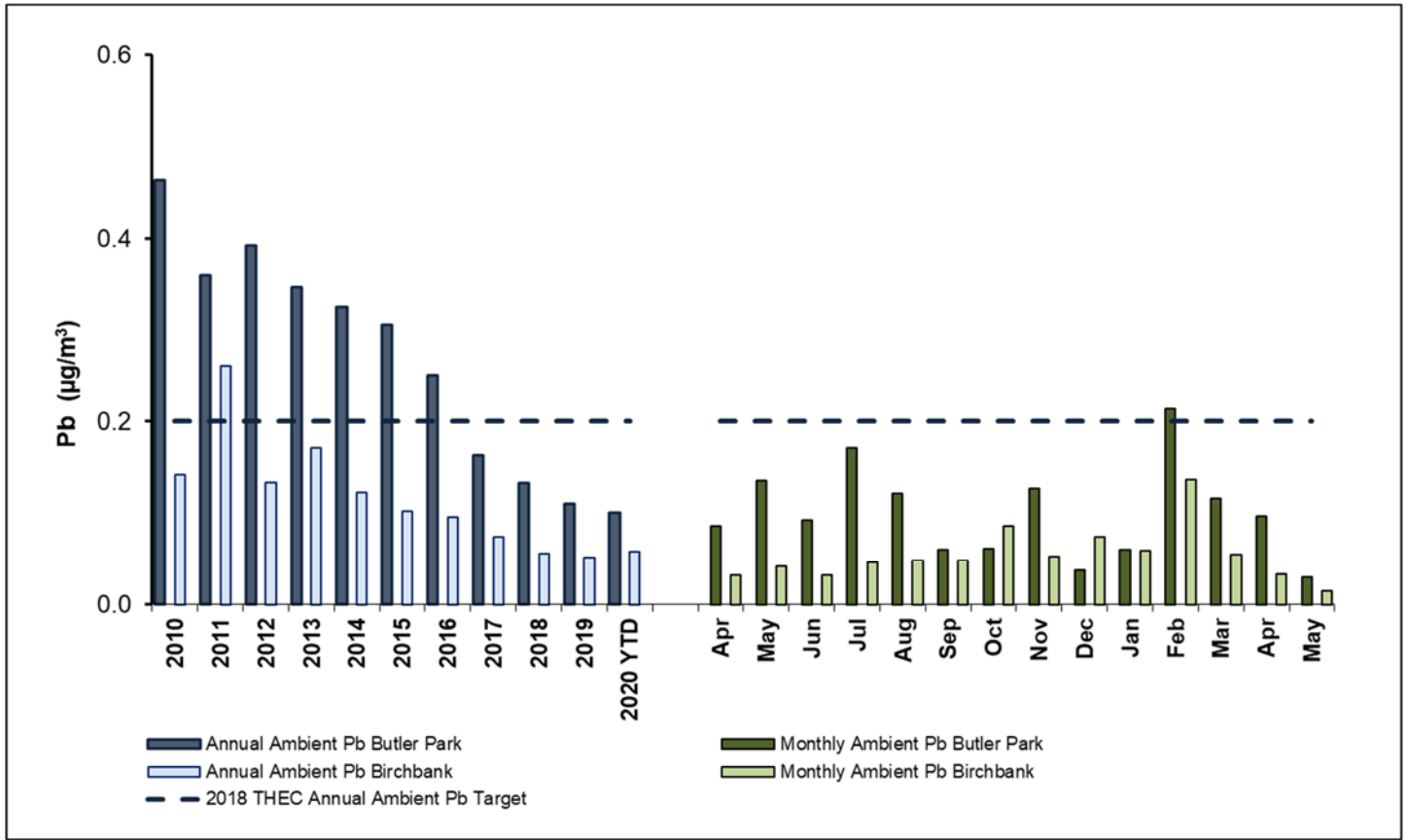


Figure 2: Annual and monthly average lead at Butler Park and Birchbank stations (as total suspended particulate measured bi-daily)

The chart in Figure 2 shows annual and monthly averages for Lead in air for Butler Park. Annual averages are shown on the left for Butler Park (dark blue) and Birchbank (light blue). Monthly averages for the past year are shown on the right for Butler Park (dark green) and Birchbank (light green). The 2018 THEC Annual Ambient Lead in Air Objective is shown as a dashed line. Monthly averages for Lead in ambient air are expected to have some variability due to season, weather, predominant wind direction and operational variance.

2. Arsenic in Air:

First quarter average for arsenic in air at Butler Park was $0.007 \mu\text{g}/\text{m}^3$, similar to the first quarter of 2019. Second quarter results to date are trending lower with monthly averages for April and March of 0.003 and $0.002 \mu\text{g}/\text{m}^3$, respectively.

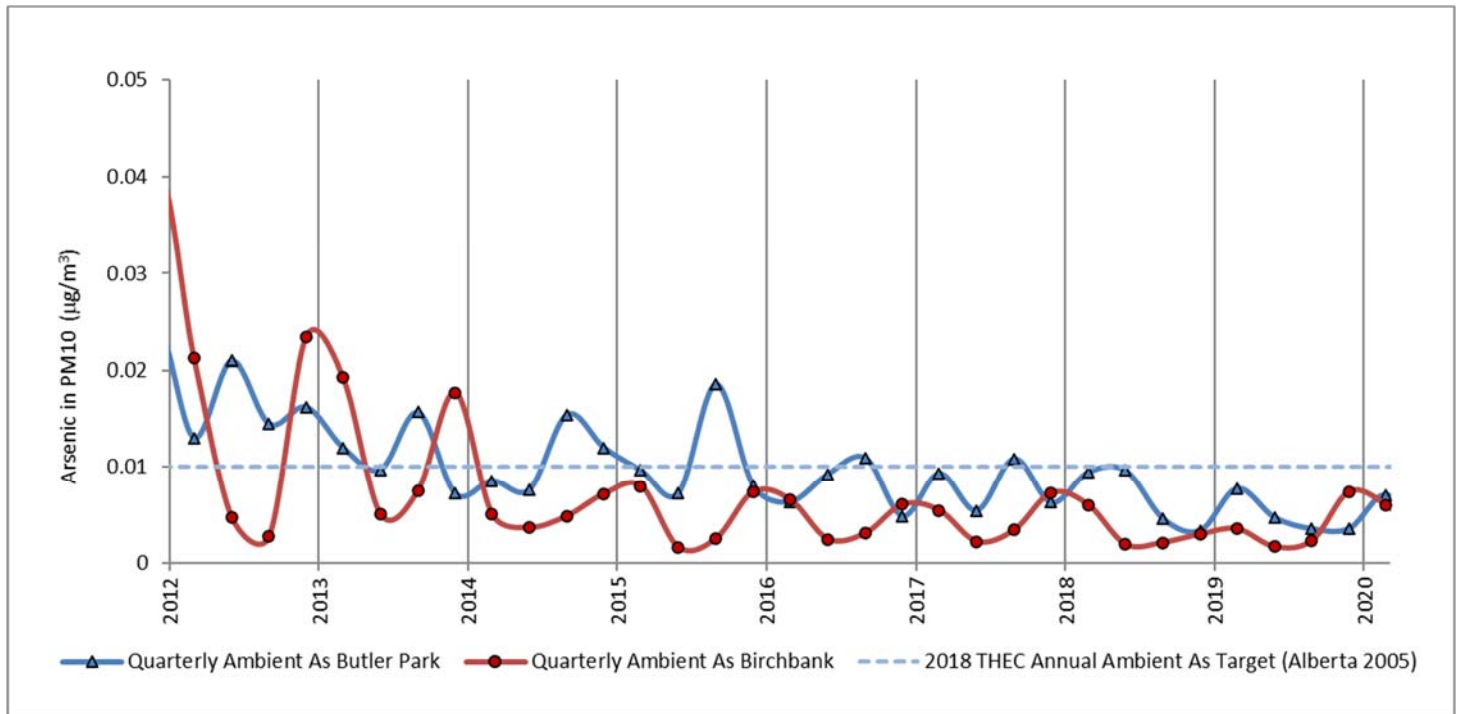


Figure 3: Quarterly average arsenic at Butler Park and Birchbank stations (as inhalable PM₁₀ fraction measured weekly)

The chart in Figure 3 shows the annual average for Arsenic in air (measured as inhalable PM₁₀ fraction) at Butler Park (blue) and Birchbank (red) in comparison to the 2018 THEC Air Quality Objective (blue line).

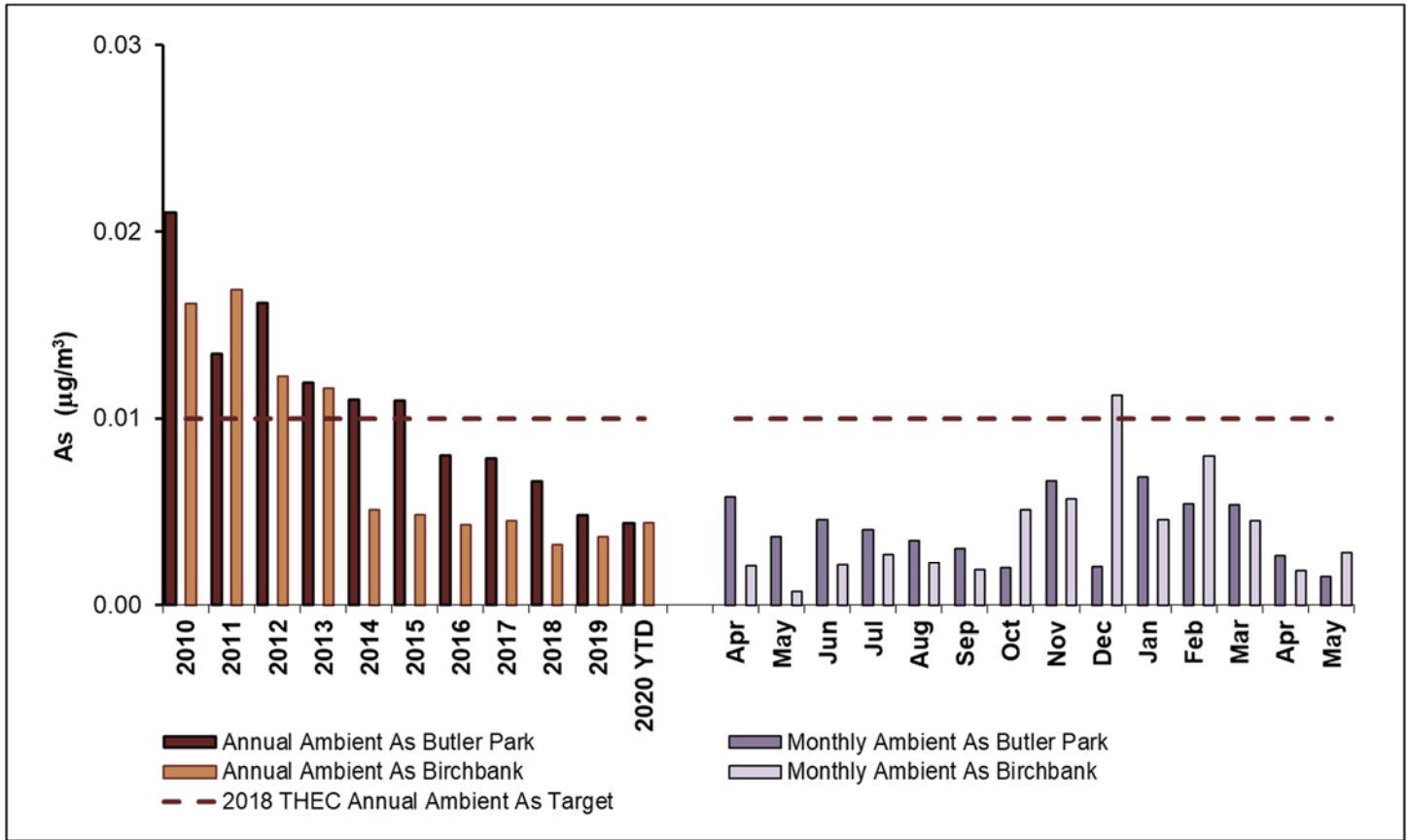


Figure 4: Annual and monthly average arsenic at Butler Park and Birchbank stations (as inhalable PM10 fraction measured weekly)

The chart in Figure 4 shows annual and monthly averages for Arsenic in air at Butler Park and Birchbank. Annual averages are shown on the left for Butler Park (dark brown) and Birchbank (light brown). Monthly averages for the past year are shown on the right for Butler Park (dark purple) and Birchbank (light purple). The 2018 THEC Air Quality Objective is shown as a dashed line. Monthly averages for Arsenic in ambient air are expected to have some variability due to season, weather, predominant wind direction, operational variance and sampling frequency.

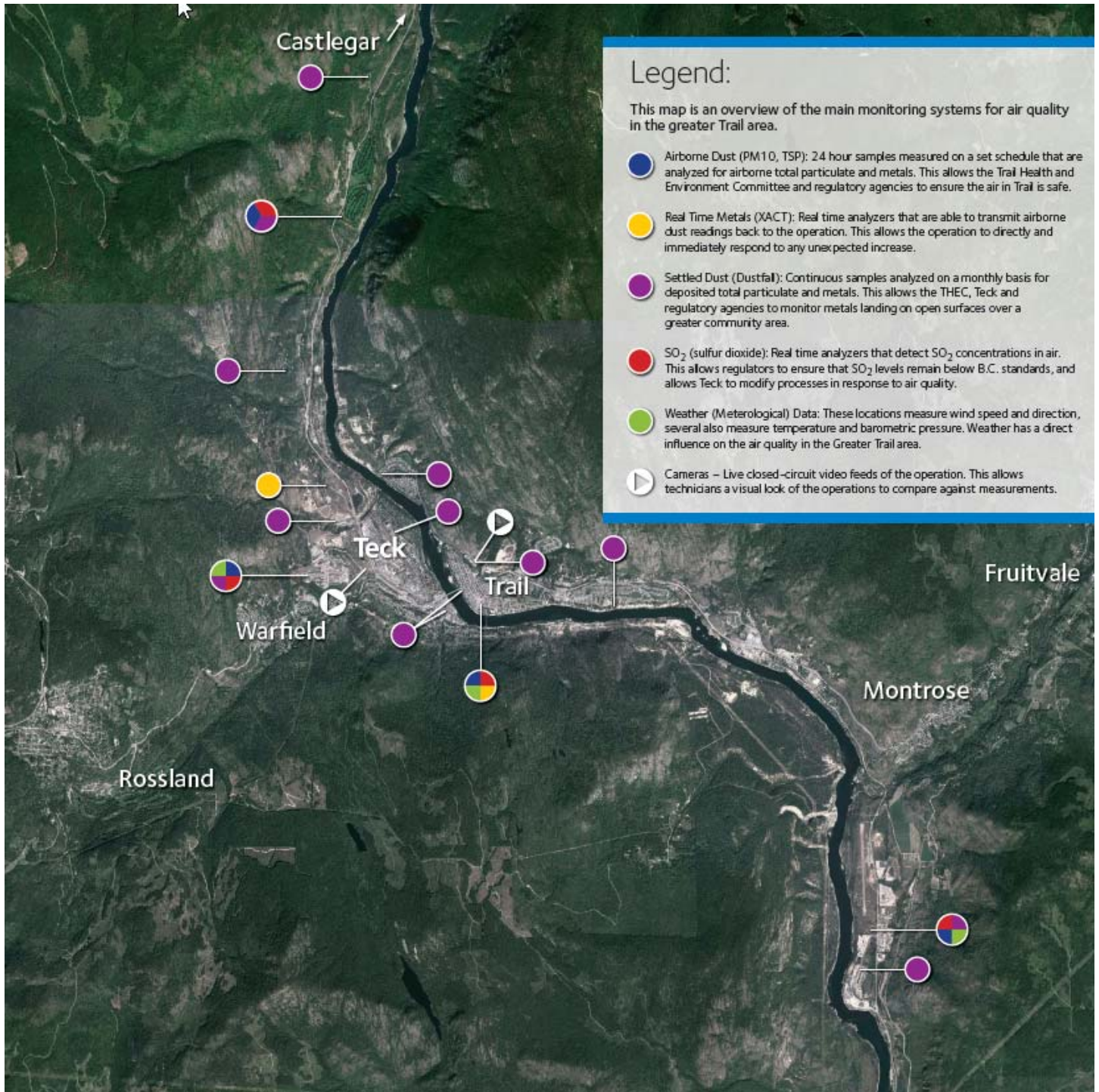


Figure 5: Teck Community Air Monitoring Stations