



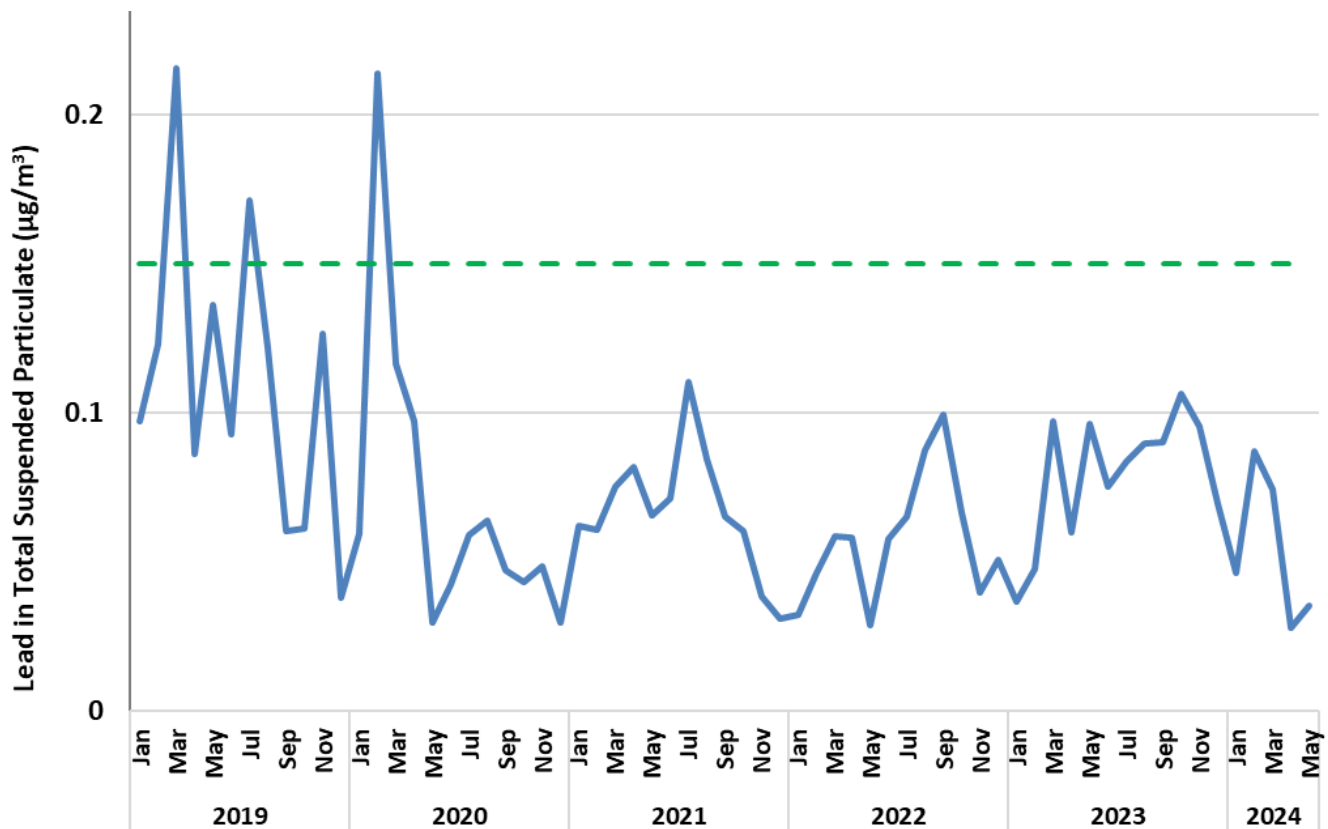
## Air Quality Report – June 2024

The THEC Air Quality Report provides an update on levels Pb and SO<sub>2</sub> in community air based on THEP’s current priorities related to ambient air.

### 1. Lead in Air:

Figure 1 presents the 3-month rolling average for lead in air measured at the Butler Park station compared to the US EPA standard of 0.15 µg/m<sup>3</sup>. Federal and BC Provincial governments do not have ambient air quality objectives or standards for lead; however, it is reasonable to rely on standards from other jurisdictions when this is the case.

Lead in air levels measured at Butler Park and Birchbank meet the US EPA standard of 0.15 µg/m<sup>3</sup> on a 3-month average. The intra-annual variability in the data reflects the influence of weather including dominant wind direction and precipitation. Read THEP’s Lead (Pb) [Fact Sheet](#) to learn more.



— Butler Park Pb in TSP 3-month rolling average — US EPA National Ambient Air Quality Standard

**Figure 1: 3-month rolling average lead in air at Butler Park station (as total suspended particulate measured bi-daily)**

The chart in Figure 1 shows the 3-month rolling average for lead in air for Butler Park (blue line), in comparison to the US EPA standard (green dashed line).

*Questions or concerns about Air Quality?*

*Call Teck’s Community and Environment Feedback line at (250) 364-4817*

## 2. Sulphur Dioxide (SO<sub>2</sub>):

SO<sub>2</sub> is emitted by Teck Trail Operations as a by-product of processing mine concentrates, which contain sulphur, into metal and chemical products. Teck Trail Operations currently captures more than 99% of the sulphur and converts it to by-products, such as fertilizer and sulphuric acid. About 1% leaves the operation through emissions to air. With environmental improvements, SO<sub>2</sub> emissions continue to decline. However, the dispersion of air emissions from the smelter is constrained due to the location of the smelter, weather and the surrounding topography.

SO<sub>2</sub> is monitored by Teck at four locations throughout Trail and the surrounding areas – Birchbank, Butler Park, Columbia Gardens and Warfield. These stations operate continuously, with near real-time data publicly available at <https://www.env.gov.bc.ca/epd/bcairquality/readings/find-stations-map-SO2.html> SO<sub>2</sub> levels fluctuate throughout the day, month and year.

THEP's SO<sub>2</sub> [Fact Sheet](#) provides guidance for actions to take when SO<sub>2</sub> levels are elevated. The chart below provides SO<sub>2</sub> hourly data from Butler Park and Birchbank stations for 2013 – 2023, categorized by the health guidance levels. As Teck Trail Operations continues to implement emissions reductions measures, the percentage of hours within the yellow (35-185 ppb) and red (>185 ppb) categories is decreasing.

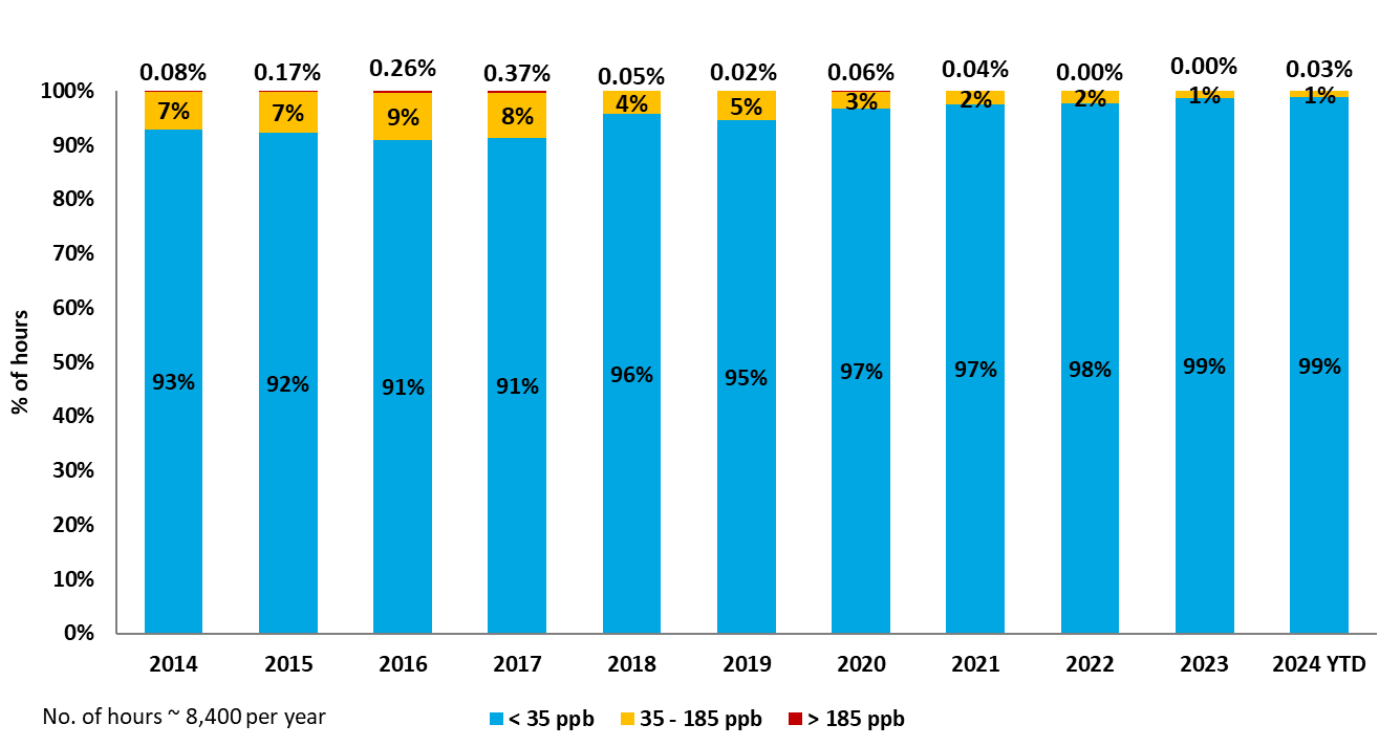
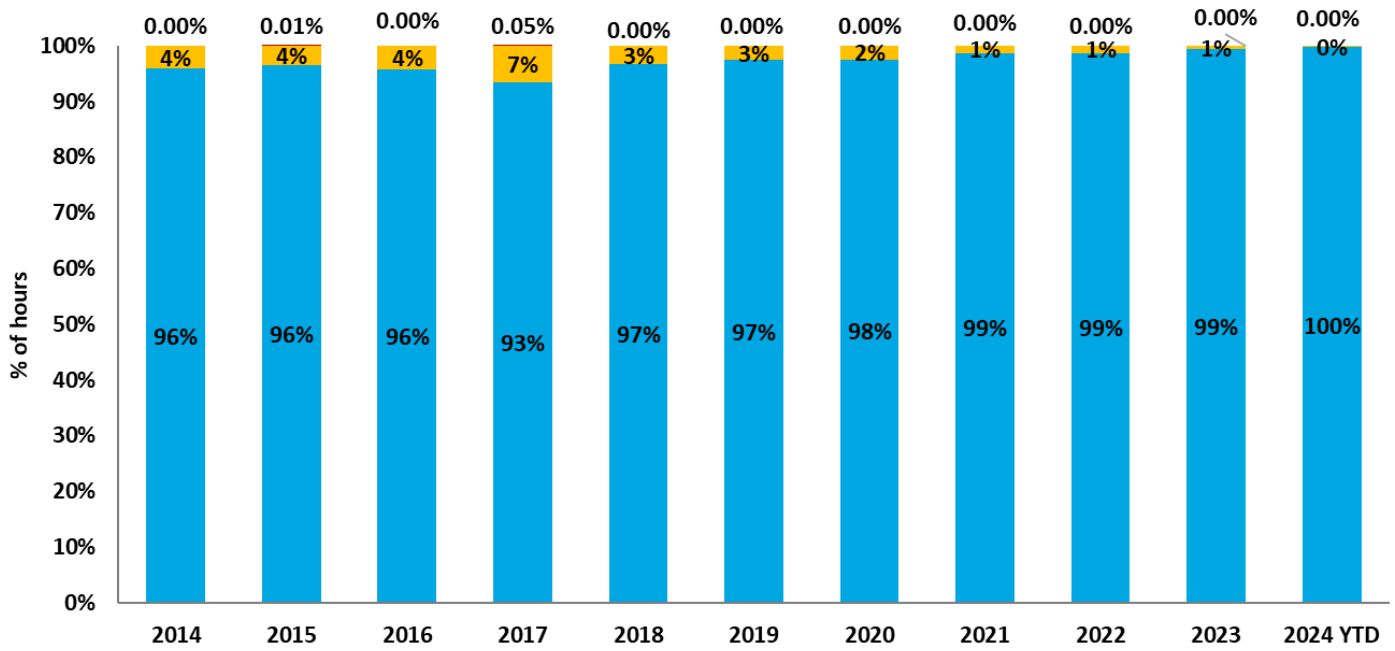


Figure 2: Distribution of Hourly SO<sub>2</sub> Levels at Butler Park



No. of hours ~ 8,400 per year

■ < 35 pbb ■ 35 - 185 ppb ■ > 185 ppb

**Figure 3: Distribution of Hourly SO<sub>2</sub> Levels at Birchbank**

*Questions or concerns about Air Quality?*

*Call Teck's Community and Environment Feedback line at (250) 364-4817*

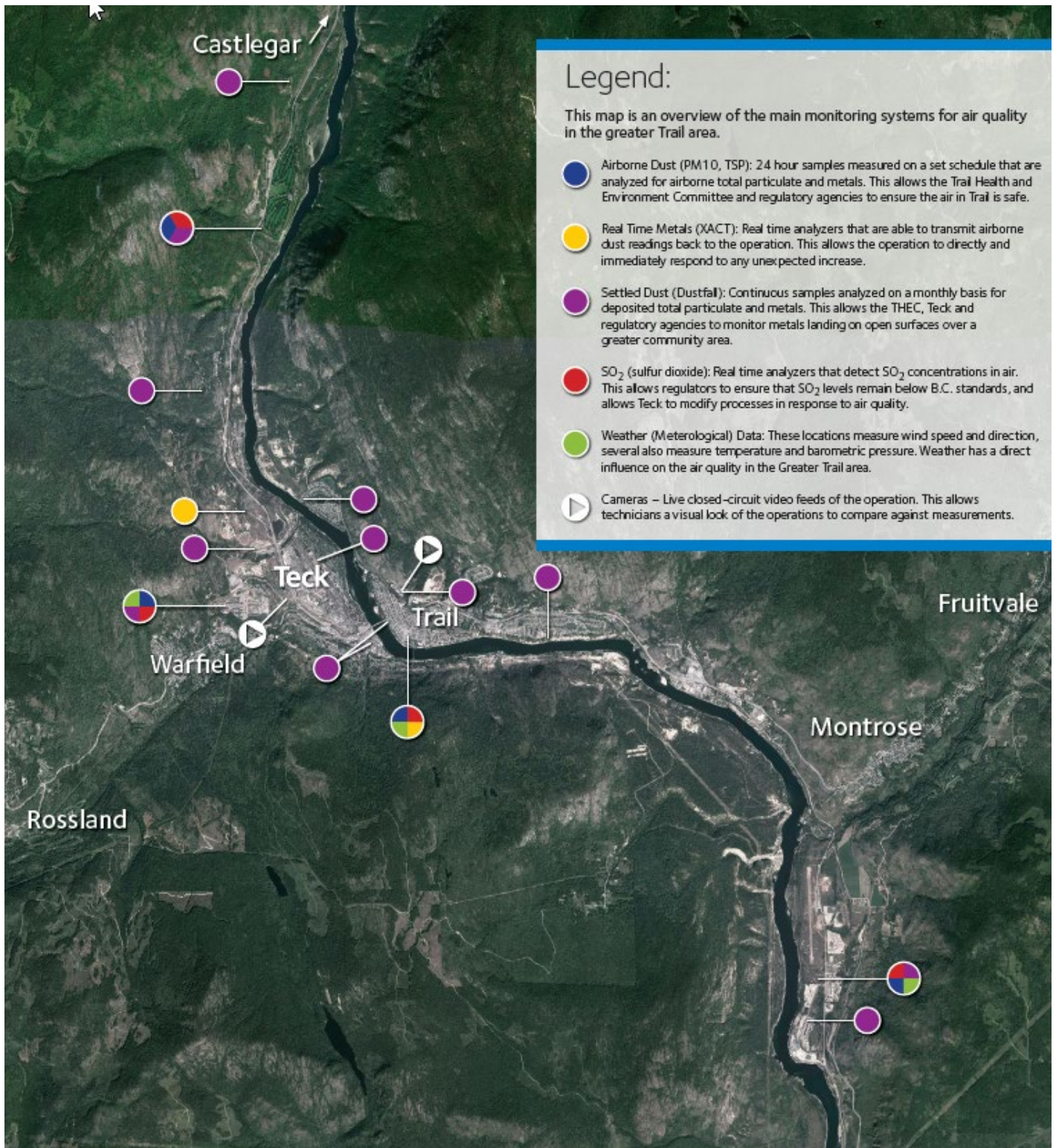


Figure 4: Teck Community Air Monitoring Stations

Questions or concerns about Air Quality?  
 Call Teck's Community and Environment Feedback line at (250) 364-4817